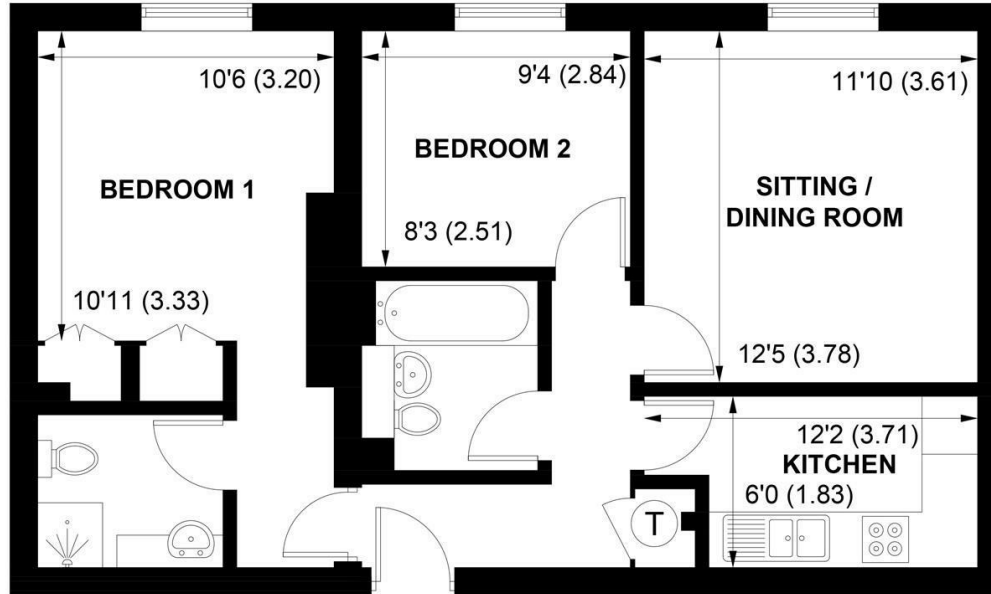




Sims Williams



FLAT 8, FORBES PLACE, KING GEORGE GARDENS, CHICHESTER, WEST SUSSEX, PO19 6LF



GROUND FLOOR

APPROXIMATE GROSS INTERNAL AREA = 635 SQ FT / 59.0 SQ M

NOT TO SCALE (For illustrative purposes only as defined by RICS Code of Measuring Practice) 2025 ©
Produced for Sims Williams

£1,450 PCM

FLAT 8, FORBES PLACE, KING GEORGE
GARDENS,
CHICHESTER,

- Two Bedroom Apartment
- Grade II Listed
- Upper Ground Floor Apartment
- Sitting Room & Fitted Kitchen
- Two Bedrooms
- Bathroom & Shower Room
- Communal Gardens
- Allocated Parking Space
- Five Weeks Rent Security Deposit

EPC RATING

Current = E
Potential = C

COUNCIL TAX BAND

Band = D

The property briefly consists of 2 double BEDROOMS, ENSUITE TO MASTER. Kitchen, separate lounge and main bathroom.

Forbes place has beautiful formal gardens to the front of the building with lawns bordered with box hedging and a wide variety of roses. A stunning wisteria is set within delightful and well maintained communal grounds. There is also one parking space included PLUS VISITOR PARKING AVAILABLE.

Application and Fees Holding Deposit – capped at One weeks rent Paid by you to reserve the Property. This will only be retained by us if any relevant person (including any guarantor(s)) withdraw from the tenancy, fail a Right-to-Rent check, provide materially significant false or misleading information, or fail to sign their tenancy agreement (and/or Deed of Guarantee) within 15 calendar days.

Sales & Lettings offices in Arundel, Bognor Regis, Chichester & Walberton

