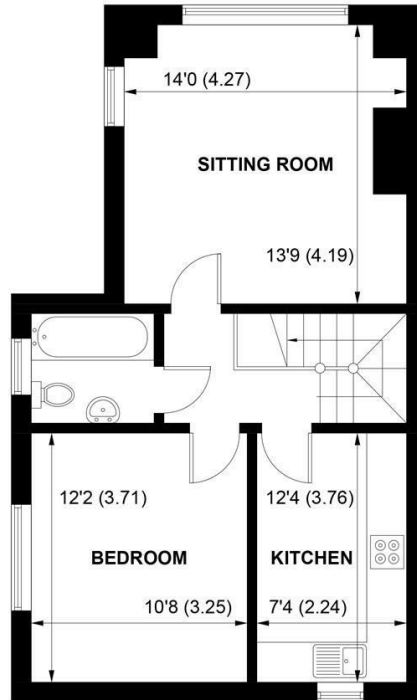




Sims Williams



33 ALDWICK ROAD, ALDWICK, WEST SUSSEX, PO21 2LN



FIRST FLOOR

APPROXIMATE GROSS INTERNAL AREA = 536 SQ FT / 49.8 SQ M

NOT TO SCALE (For illustrative purposes only as defined by RICS Code of Measuring Practice) 2023 ©
Produced for Sims Williams

£950 PCM

33, ALDWICK ROAD,
ALDWICK,
WEST SUSSEX, PO21 2LN

- One Bedroom Flat
- First Floor with Private Entrance
- Large Bright Lounge
- Fitted Kitchen
- Bathroom
- Minutes Away From Beach Front
- Allocated Parking Space
- Close To Town Centre
- Five Weeks Rent Security Deposit

EPC RATING

Current = D
Potential = C

COUNCIL TAX BAND

Band = B

One bedroom apartment within a few minutes walk of the beach with allocated parking space.

There is a private entrance leading to the first floor with stairs leading to the accommodation. This apartment has a sizable kitchen and a double bedroom to the rear. To the front is a bathroom and a dual aspect sitting room.

The bathroom comprise of a bath with low level hand held shower head. The bathroom is only partially tiled and therefore it is not possible to have a stand up shower.

The property is neutrally decorated and has double glazing and gas central heating.

To the front of the property is an allocated parking space.

Application and Fees Holding Deposit – capped at One weeks rent Paid by you to reserve the Property. This will only be retained by us if any relevant person (including any guarantor(s)) withdraw from the tenancy, fail a Right-to-Rent check, provide materially significant false or misleading information, or fail to sign their tenancy agreement (and/or Deed of Guarantee) within 15 calendar days.

Sales & Lettings offices in Arundel, Bognor Regis, Chichester & Walberton

