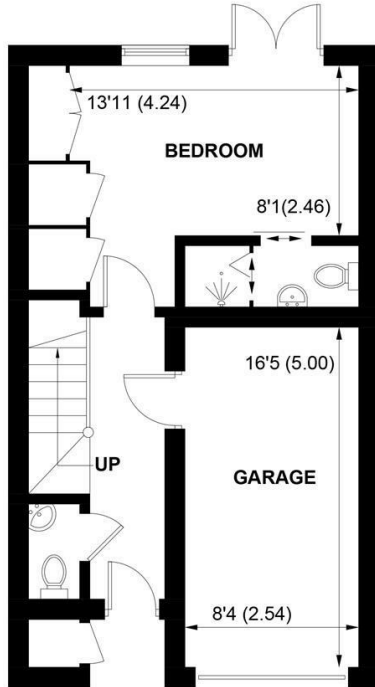


The logo for Sims Willmott, featuring the letters 'SW' in a stylized, cursive font in white on a dark blue square background.

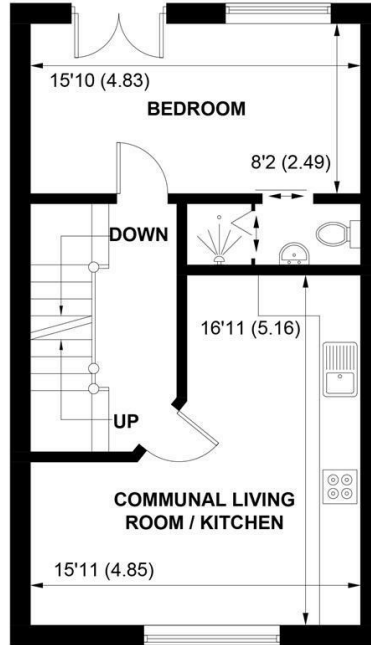
Sims Willmott



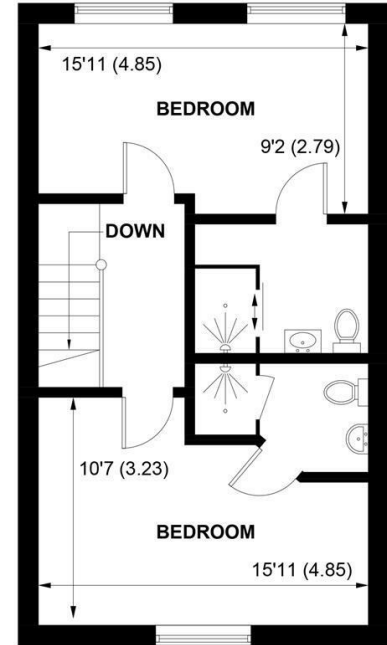
88 BAXENDALE ROAD, CHICHESTER, WEST SUSSEX, PO19 6UN



GROUND FLOOR



FIRST FLOOR



SECOND FLOOR

**APPROXIMATE GROSS INTERNAL AREA = 1378 SQ FT / 128.0 SQ M
(INCLUDING GARAGE)**

NOT TO SCALE (For illustrative purposes only as defined by RICS Code of Measuring Practice) 2020 ©
Produced for Sims Williams

£2,600 PCM

88, BAXENDALE ROAD,
CHICHESTER,
WEST SUSSEX, PO19 6UN

- Superb Town House
- Near Hospital
- Ideal For Sharers
- Four Bedrooms
- Four En - Suite Showers
- Kitchen/Reception Area
- Garage & Garden
- Available Furnished
- Deposit: Five Weeks' Rent

EPC RATING

Current = C
Potential = B

COUNCIL TAX BAND

Band = E

This super town house has been adapted to provide high quality accommodation for professional sharers.

Each bedroom is of a good size and they all have an en - suite shower.

There is a comprehensively fitted kitchen, with open plan reception area.

The house has a garden to the rear and a garage.

There is a parking space in front of the garage and the house has gas central heating.

It is available to let furnished.

The property is situated near the hospital.

Chichester has numerous shops and restaurants in the city, along with the famous Festival Theatre.

Sporting activities include golf and racing at Goodwood and sailing at Chichester Harbour.

Directions: from St Richard's, turn into

Swanfield Drive and towards the end of this road, bear left into Barnfield Drive.

Continue to the end of this road and at the junction, turn left and proceed to the next junction.

Turn left again and this will take you into Baxendale Road.

Application and Fees Holding Deposit – capped at One weeks rent Paid by you to reserve the Property. This will only be retained by us if any relevant person (including any guarantor(s)) withdraw from the tenancy, fail a Right-to-Rent check, provide materially significant false or misleading information, or fail to sign their tenancy agreement (and/or Deed of Guarantee) within 15 calendar days.

