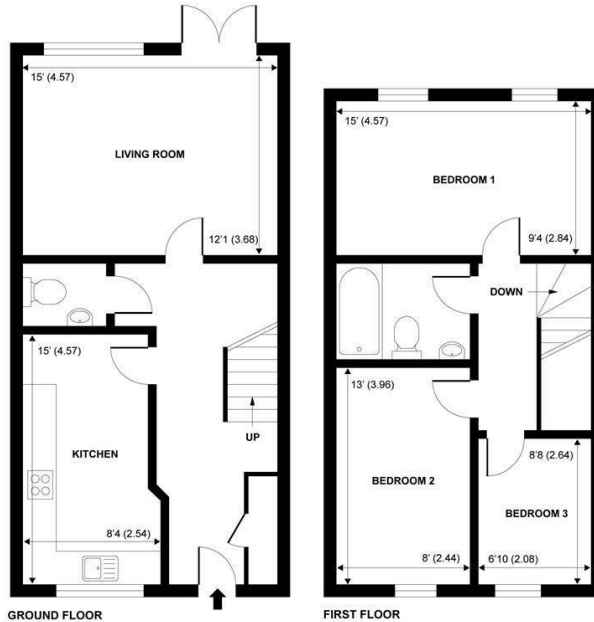


SW

Sims Williams



1 MILESTONE COTTAGES, BIRDHAM ROAD, DONNINGTON, WEST SUSSEX, PO20 7FE



APPROX. GROSS INTERNAL FLOOR AREA 926 SQ FT 86 SQ METRES

NOT TO SCALE (For illustrative purposes only as defined by RICS Code of Measuring Practice) 2014©

CHICHESTER OFFICE

8-9 Southgate
Chichester
PO19 1ES

Tel 01243 836055
lettings@simswilliams.co.uk
simswilliams.co.uk

£1,495 PCM

1, MILESTONE COTTAGES,
BIRDHAM ROAD DONNINGTON,
WEST SUSSEX, PO20 7FE

- Three Bedroom House
- Lounge
- Fitted Kitchen
- Ground Floor Cloakroom
- Three Bedrooms
- Family Bathroom
- Solar Panels, Alarm Systems
- Gas Heating, Upvc Double Glazing
- Five Week Security Deposit

EPC RATING

Current = B

Potential = B

COUNCIL TAX BAND

Band = D

In a cul de sac setting these properties benefit from allocated parking, visitor parking and a delightful outlook to the front over lawns and trees. Some houses enjoy views over fields from the first floor.

The accommodation comprises of a good entrance hall, cloakroom, living room with doors opening to a patio and garden and a kitchen with a range of units incorporating integrated fridge freezer, washing machine, oven, hob and extractor.

On the first floor there are 3 bedrooms and a bathroom with a white suite with shower over bath.

The houses are equipped with gas central heating, upvc double glazing, alarm systems, a pressurised hot water system and solar panels.

Application and Fees Holding Deposit – capped at One weeks rent Paid by you to reserve the Property. This will only be retained by us if any relevant person (including any guarantor(s)) withdraw from the tenancy, fail a Right-to-Rent check, provide materially significant false or misleading information, or fail to sign their tenancy agreement (and/or Deed of Guarantee) within 15 calendar days.

