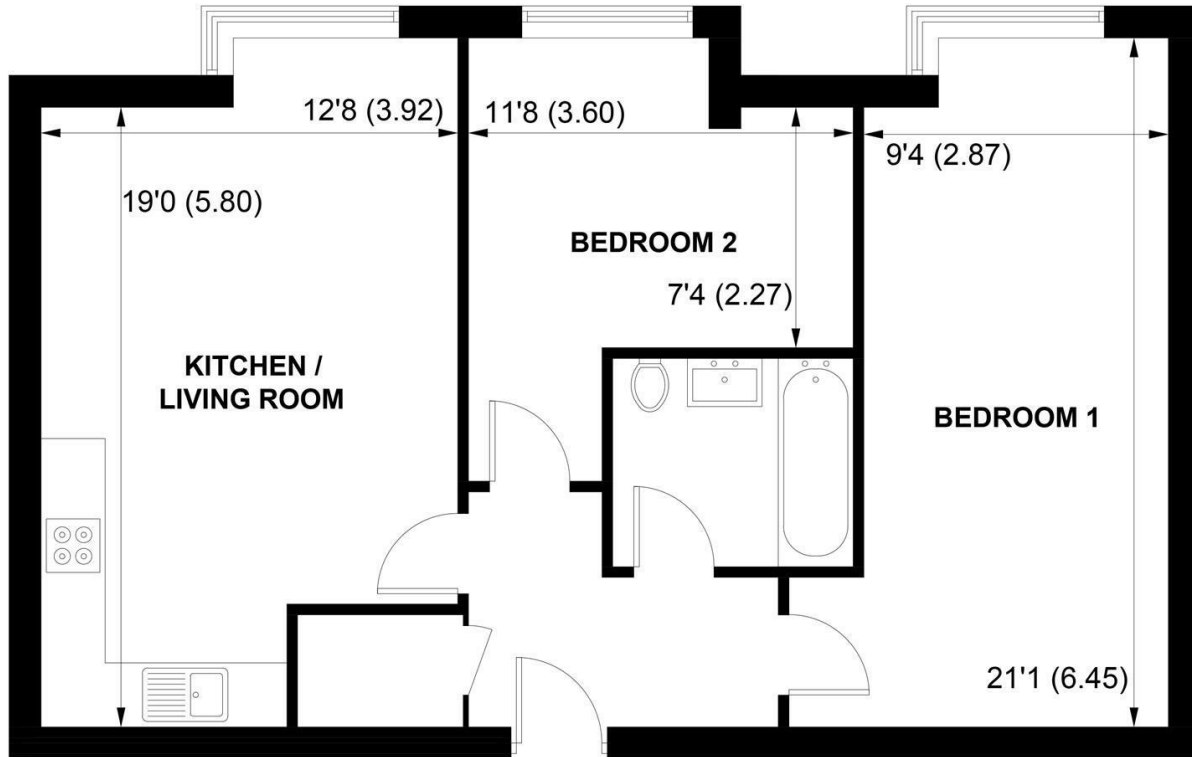




Sims Williams



FLAT 12, 5-6 SOUTHGATE, CHICHESTER, WEST SUSSEX, PO19 8EH



APPROXIMATE GROSS INTERNAL AREA = 688 SQ FT / 64 SQ M

NOT TO SCALE (For illustrative purposes only as defined by RICS Code of Measuring Practice) 2023 ©
Produced for Sims Williams

CHICHESTER OFFICE

8-9 Southgate
Chichester
PO19 1ES

Tel 01243 836055
lettings@simswilliams.co.uk
simswilliams.co.uk

£1,250 PCM

FLAT 12, 5-6, SOUTHGATE,
CHICHESTER,
WEST SUSSEX, PO19 8EH

- First Floor Apartment
- City Centre Location
- Stylish Kitchen/Dining Room
- Integrated Appliances
- Sitting Room
- Modern Bathroom/Shower
- Two Double Bedrooms
- Lift Service
- Five Weeks Rent Security Deposit

EPC RATING

Current = D

Potential = D

COUNCIL TAX BAND

Band = C

A CONTEMPORARY FIRST FLOOR TWO BEDROOM APARTMENT located at the southern end of the city centre. Well presented, the property has a lovely kitchen with high quality units incorporating handle less soft close doors and drawers and pelmet lighting. Fully integrated Neff appliances with induction hob, multi function oven 'fridge/freezer, dishwasher, and free standing washing machine, along with Blanco sink with mixer tap.

The bathroom has a stylish suite of bath with mixer taps and shower over, white sanitary ware, marble effect wall and floor tiles.

The flooring throughout the remainder of the apartment is high quality Kardean in the hallway and sitting room and carpeting in the bedroom. Heating is via a pressured hot water system linked to an electric boiler.

There is parking available within the Avenue De Chartres car park which is next to the building where permits can be purchased on a monthly or annual basis.

With regret no pets.

Application and Fees Holding Deposit – capped at One weeks rent Paid by you to reserve the Property. This will only be retained by us if any relevant person (including any guarantor(s)) withdraw from the tenancy, fail a Right-to-Rent check, provide materially significant false or misleading information, or fail to sign their tenancy agreement (and/or Deed of Guarantee) within 15 calendar days.

