

The logo for Sims Williams, featuring the letters 'SW' in a stylized, white, cursive font on a dark blue square background.

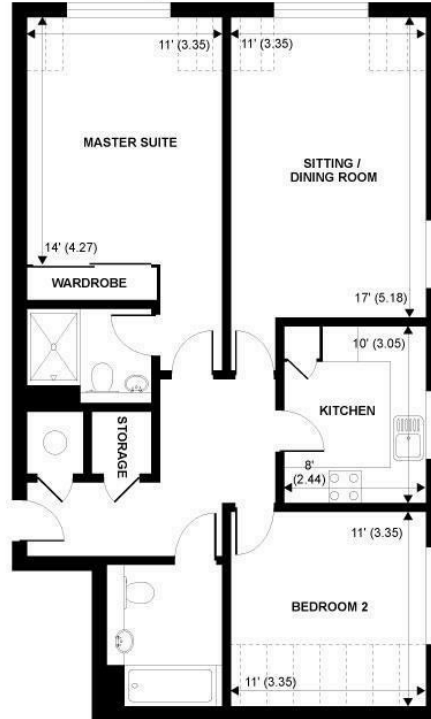
Sims Williams



19 ST. BARTHOLOMEWS CLOSE, CHICHESTER, WEST SUSSEX, PO19 3EP



Denotes restricted  
head height



**SECOND FLOOR**

APPROX. GROSS INTERNAL FLOOR AREA 839 SQ FT 77.9 SQ METRES (INCLUDES RESTRICTED HEAD HEIGHT)

NOT TO SCALE (For illustrative purposes only as defined by RICS Code of Measuring Practice) 2016

**CHICHESTER OFFICE**

8-9 Southgate  
Chichester  
PO19 1ES

Tel 01243 836055  
lettings@simswilliams.co.uk  
simswilliams.co.uk

# £1,375 PCM

19, ST. BARTHOLOMEWS CLOSE,  
CHICHESTER,  
WEST SUSSEX, PO19 3EP

- Stylish Apartment
- Superb Location Near City Centre
- Two Double Bedrooms
- Family Bathroom, En-Suite Shower Room
- Modern Kitchen
- Double Aspect Sitting/Dining Room
- Allocated Parking & Bike Store
- Delightful Communal Gardens
- Five Weeks Rent Security Deposit

## EPC RATING

Current = C

Potential = B

## COUNCIL TAX BAND

Band = D

This is a superb second floor apartment and accessed from ground level via a secure phone entry system into the communal hallway with direct access to all floors via stairs or a lift. It is set in one of the most sought after locations in Chichester just off Westgate. The apartment has excellent space, which includes two generous bedrooms and it is extremely well appointed.

The accommodation consists of an entrance hall, south and west facing sitting/dining room, modern kitchen, two double bedrooms including a south facing master suite with en-suite shower room and a family bathroom.

In addition to gas fired central heating, the apartment has the benefit of a lift to all floors and there is also allocated parking. There are also very pleasant communal gardens.

*Application and Fees Holding Deposit – capped at One weeks rent Paid by you to reserve the Property. This will only be retained by us if any relevant person (including any guarantor(s)) withdraw from the tenancy, fail a Right-to-Rent check, provide materially significant false or misleading information, or fail to sign their tenancy agreement (and/or Deed of Guarantee) within 15 calendar days.*



