

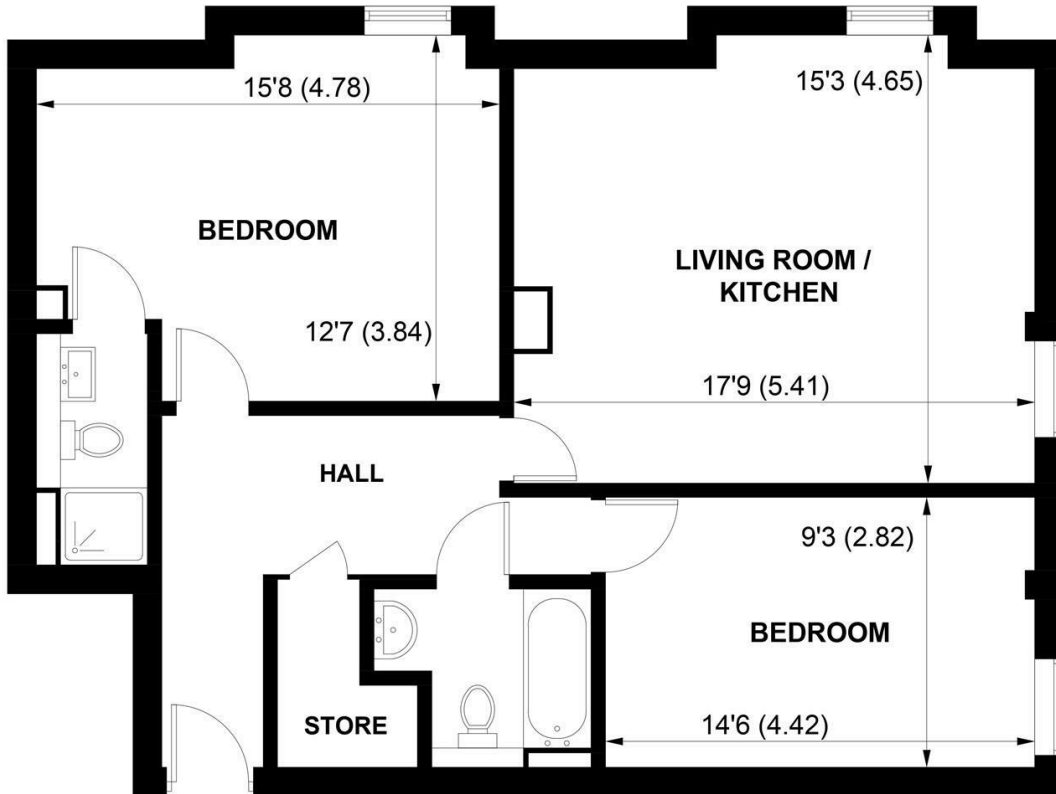
SW

Stuart Williams



10 MONTCLAIR HOUSE, 19 SOUTHGATE, CHICHESTER, WEST SUSSEX, PO19 1DN





APPROXIMATE GROSS INTERNAL AREA = 798 SQ FT / 74.1 SQ M
 NOT TO SCALE (For illustrative purposes only as defined by RICS Code of Measuring Practice) 2022 ©
 Produced for Sims Williams

£1,200 PCM

10 MONTCLAIR HOUSE, 19,
SOUTHGATE,
CHICHESTER,

- Contemporary New Build Apartment
- City Centre Location
- Intercom Door Entry System
- Lift Access
- Underfloor Heating System
- Stylish Kitchen & Two Bedrooms
- Contemporary Bathrooms
- Allocated Parking
- Five Week Security Deposit

EPC RATING

Current = C

Potential = C

COUNCIL TAX BAND

Band = D

Modern, contemporary apartment, built in 2021 and located at the southern end of the city centre in a super development by Jaspar. Superbly presented, the property is accessed by an intercom door entry system, with the option of a lift to the first, second and third floor apartments. With two generous bedrooms, plus an en - suite and separate bathroom, this apartment is perfect for two professional sharers or a couple. Allocated parking space.

Fitted with high gloss quality kitchen, incorporating composite worktops and integrated appliances.

The bathrooms have white sanitary ware, designer taps, accessories and stainless steel/chrome finished heated towel rails with porcelain floor & wall tiles. Both the bedrooms are generous rooms and there is an en - suite shower off the main bedroom.

The apartment is heated by a high efficiency electric underfloor heating system.

There is an allocated parking space with this apartment.

Application and Fees Holding Deposit – capped at One weeks rent Paid by you to reserve the Property. This will only be retained by us if any relevant person (including any guarantor(s)) withdraw from the tenancy, fail a Right-to-Rent check, provide materially significant false or misleading information, or fail to sign their tenancy agreement (and/or Deed of Guarantee) within 15 calendar days.

