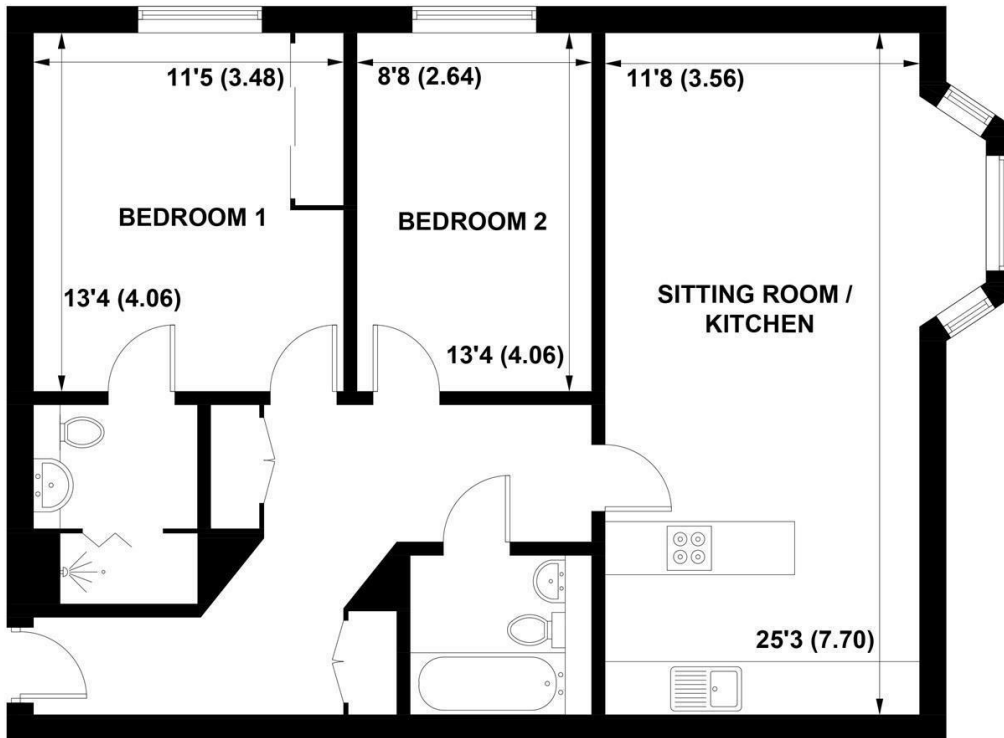


The logo consists of the letters 'SW' in a stylized, elegant, gold-colored script font, set against a dark blue square background.

Sims Williams



36 ST AGNES PLACE, CHICHESTER, WEST SUSSEX, PO19 7TN



FIRST FLOOR

APPROXIMATE GROSS INTERNAL AREA = 847 SQ FT / 78.7 SQ M

NOT TO SCALE (For illustrative purposes only as defined by RICS Code of Measuring Practice) 2021 ©
Produced for Sims Williams

£1,200 PCM

36, ST AGNES PLACE,
CHICHESTER,
WEST SUSSEX, PO19 7TN

- First Floor Apartment
- Bright Lounge/Dining Room
- Open Plan Kitchen With Integrated Appliances
- Master Bedroom With En Suite
- Second Double Bedroom
- Family Bathroom
- Plenty of Storage
- Allocated Parking Space
- Five Weeks Rent Security Deposit

EPC RATING

Current = C
Potential = B

COUNCIL TAX BAND

Band = D

The property has a secure entry system leading to communal hallway which can be accessed from the front and rear of the property. The apartment is situated on the first floor with stairs or lift access

Upon entering the property you are welcomed in to a large hallway housing two large storage cupboards.

To the rear of the property is the large open plan kitchen/lounge/dining area. With plenty of large windows making for a bright room.

The kitchen is finished to a modern standard with plenty of eye and base level units, electric hob, single oven and integrated microwave. There is also an integrated fridge/freezer and dishwasher.

The lounge has a laminate floor and ample space for a dining table.

The master bedroom is a large double with built in triple wardrobe. Benefiting from an en suite shower room with white suite and heated towel rail.

There is a further double bedroom and family bathroom comprising of white suite with shower over bath, mirror over the sink and a heated towel rail.

Other benefits of this property are double glazing, an allocated parking space, and bike store.

Application and Fees Holding Deposit – capped at One weeks rent Paid by you to reserve the Property. This will only be retained by us if any relevant person (including any guarantor(s)) withdraw from the tenancy, fail a Right-to-Rent check, provide materially significant false or misleading information, or fail to sign their tenancy agreement (and/or Deed of Guarantee) within 15 calendar days.

