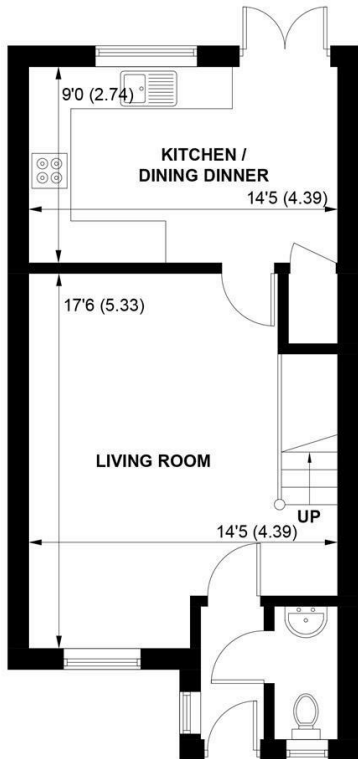




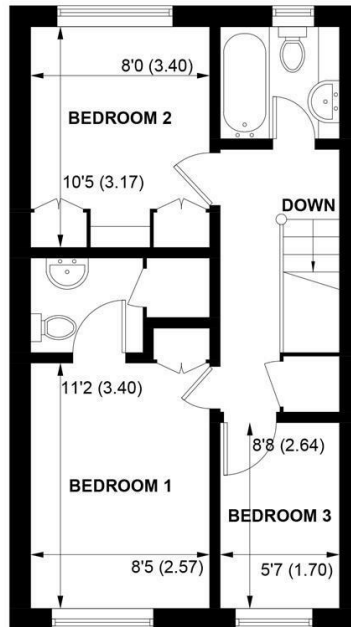
SW

Sims Williams

18 HARVESTER CLOSE, CHICHESTER, WEST SUSSEX, PO19 6XF



GROUND FLOOR



FIRST FLOOR

APPROXIMATE GROSS INTERNAL AREA = 817 SQ FT / 75.9 SQ M

NOT TO SCALE (For illustrative purposes only as defined by RICS Code of Measuring Practice) 2021 ©
Produced for Sims Williams

£1,150 PCM

18, HARVESTER CLOSE,
CHICHESTER,
WEST SUSSEX, PO19 6XF

- Two Bedroom House
- Spacious Lounge
- Modern Kitchen/ Dining Area
- Master Bedroom/En Suite
- Double Bedroom/Wardrobe
- Great Location for Hospital
- Modern Family Bathroom
- Two Parking Spaces
- Five Weeks Rent Security Deposit

EPC RATING

Current = D

Potential = B

COUNCIL TAX BAND

Band = D

Spacious lounge with an electric fire.
Modern fitted kitchen with fridge/freezer,
gas hob and electric oven and washing
machine. Space for a table and chairs
and doors onto the garden.

Master bedroom with en suite shower
room and fitted wardrobes. Double
bedroom with fitted wardrobes. The third
bedroom is not included as the landlord
retains this as storage and is locked
during the tenancy.

Modern family bathroom.

Ornamental water feature in the garden
with gate entrance.

Two allocated parking spaces.

Fully Furnished and includes Wifi service.

With regret no pets and no children.

Application and Fees Holding Deposit – capped at One weeks rent Paid by you to reserve the Property. This will only be retained by us if any relevant person (including any guarantor(s)) withdraw from the tenancy, fail a Right-to-Rent check, provide materially significant false or misleading information, or fail to sign their tenancy agreement (and/or Deed of Guarantee) within 15 calendar days.

