



## Flat 15, St. Josephs Court Carlton Place, Teignmouth

Guide Price £179,950

DART &  
PARTNERS  
Established 1971





## Flat 15

St. Josephs Court Carlton Place,  
Teignmouth

Council Tax band: B

Tenure: Leasehold

EPC Energy Efficiency Rating: C

EPC Environmental Impact Rating:

- TOWN CENTRE LOCATION
- TWO BEDROOMS
- LOUNGE, OPEN THROUGH TO KITCHEN
- uPVC D/G, GAS C/H
- GROUND FLOOR APARTMENT
- PRESENTED IN IMMACULATE ORDER
- SHOWER ROOM
- LEVEL WALK TO SEAFRONT AND BEACHES





## **COMMUNAL HALLWAY**

Telephone entry system, door to Apartment 15.

## **HALLWAY**

Radiator, doors to....

## **RECEPTION ROOM**

Two uPVC double glazed sash windows overlooking the front aspect, radiator, open plan to....

## **KITCHEN**

Modern fitted kitchen with corresponding cupboard and drawer base units under work surfaces, incorporating a Hotpoint electric oven and corresponding four ring gas hob, one and a half bowl stainless steel single drainer sink unit with mixer tap over, integrated Hotpoint dishwasher and Hotpoint washer/dryer, integrated fridge and freezer, tiled splashbacks, corresponding eye level units, chimney style extractor.

## **BEDROOM 1**

uPVC double glazed sash window overlooking the rear aspect, radiator.

## **BEDROOM/RECEPTION 2**

uPVC double glazed sash window to front aspect, radiator. Door to built in cupboard housing a gas combination boiler providing the central heating throughout the property.

## **SHOWER ROOM**

Fully tiled with corresponding white suite comprising low level WC, wall mounted wash hand basin, shower cubicle with fitted shower and glazed sliding door and screen, ladder style towel rail/radiator, fitted extractor, quarry tiled flooring.







#### **COMMUNAL HALLWAY**

Telephone entry system, door to Apartment 15.

#### **HALLWAY**

Radiator, doors to....

#### **RECEPTION ROOM**

Two uPVC double glazed sash windows overlooking the front aspect, radiator, open plan to....

#### **KITCHEN**

Modern fitted kitchen with corresponding cupboard and drawer base units under work surfaces, incorporating a Hotpoint electric oven and corresponding four ring gas hob, one and a half bowl stainless steel single drainer sink unit with mixer tap over, integrated Hotpoint dishwasher and Hotpoint washer/dryer, integrated fridge and freezer, tiled splashbacks, corresponding eye level units, chimney style extractor.

#### **BEDROOM 1**

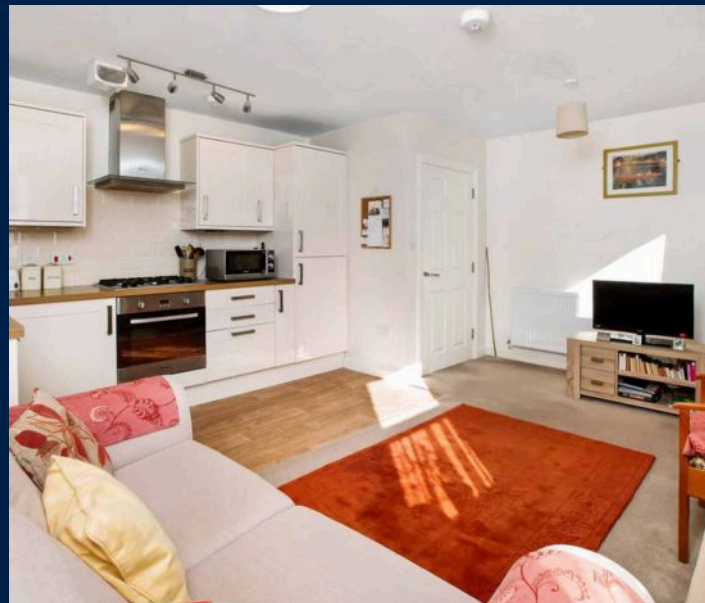
uPVC double glazed sash window overlooking the rear aspect, radiator.

#### **BEDROOM/RECEPTION 2**

uPVC double glazed sash window to front aspect, radiator. Door to built in cupboard housing a gas combination boiler providing the central heating throughout the property.

#### **SHOWER ROOM**

Fully tiled with corresponding white suite comprising low level WC, wall mounted wash hand basin, shower cubicle with fitted shower and glazed sliding door and screen, ladder style towel rail/radiator, fitted extractor, quarry tiled flooring.





## **COMMUNAL HALLWAY**

Telephone entry system, door to Apartment 15.

## **HALLWAY**

Radiator, doors to....

## **RECEPTION ROOM**

Two uPVC double glazed sash windows overlooking the front aspect, radiator, open plan to....

## **KITCHEN**

Modern fitted kitchen with corresponding cupboard and drawer base units under work surfaces, incorporating a Hotpoint electric oven and corresponding four ring gas hob, one and a half bowl stainless steel single drainer sink unit with mixer tap over, integrated Hotpoint dishwasher and Hotpoint washer/dryer, integrated fridge and freezer, tiled splashbacks, corresponding eye level units, chimney style extractor.

## **BEDROOM 1**

uPVC double glazed sash window overlooking the rear aspect, radiator.

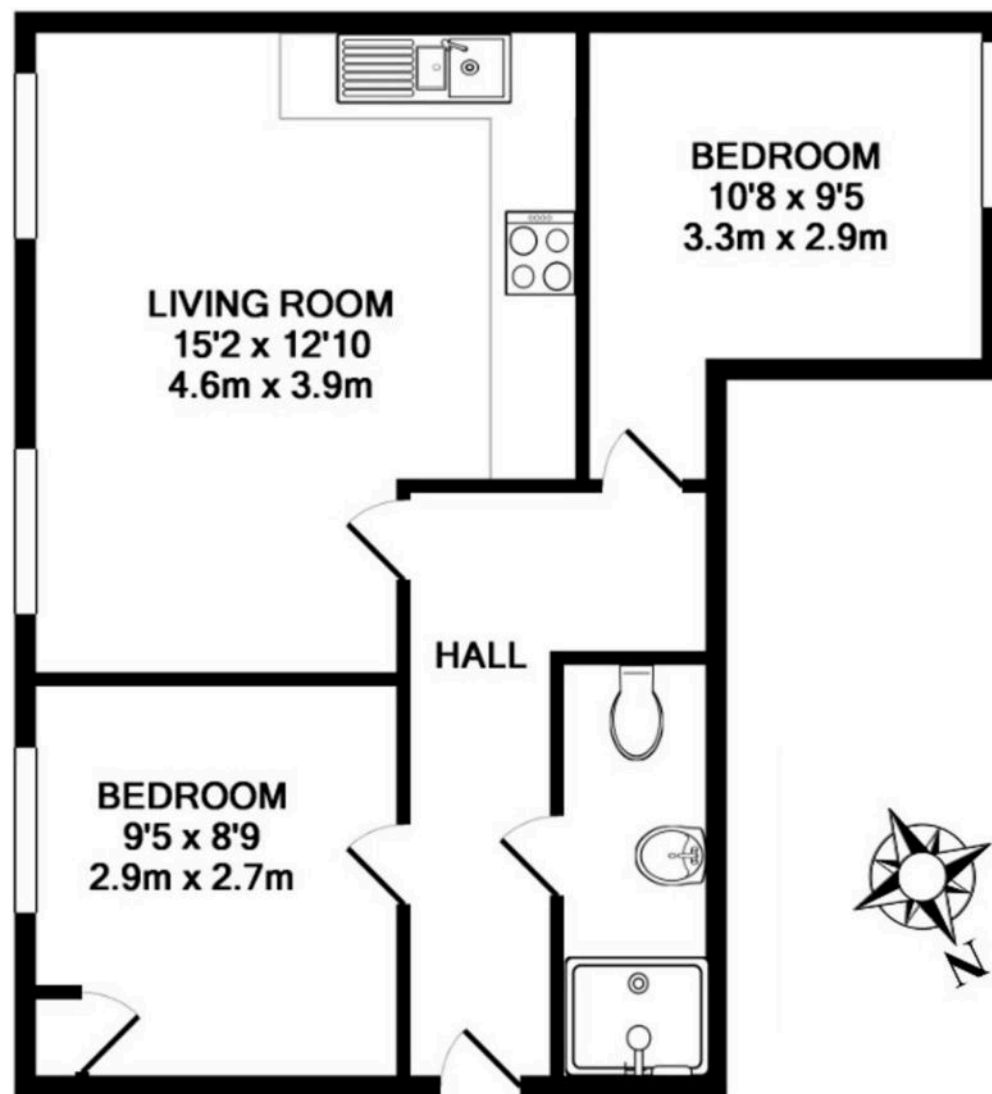
## **BEDROOM/RECEPTION 2**

uPVC double glazed sash window to front aspect, radiator. Door to built in cupboard housing a gas combination boiler providing the central heating throughout the property.

## **SHOWER ROOM**

Fully tiled with corresponding white suite comprising low level WC, wall mounted wash hand basin, shower cubicle with fitted shower and glazed sliding door and screen, ladder style towel rail/radiator, fitted extractor, quarry tiled flooring.





**TOTAL APPROX. FLOOR AREA 442 SQ.FT. (41.1 SQ.M.)**

Whilst every attempt has been made to ensure the accuracy of the floor plan contained here, measurements of doors, windows, rooms and any other items are approximate and no responsibility is taken for any error, omission, or mis-statement. This plan is for illustrative purposes only and should be used as such by any prospective purchaser. The services, systems and appliances shown have not been tested and no guarantee as to their operability or efficiency can be given

Made with Metropix ©2018

