



Mill House, Midland Drive,  
Sutton Coldfield, B72 1TU

**£235,000**

## Midland Drive, Sutton Coldfield

£235,000



Mill House is an exclusive development that comprises of just 7 superb apartments in a central location.

Plots 4 (First floor) and 6 (Second floor) are available, each of which are finished to a high standard with a superior quality open plan kitchen/living area featuring integrated appliances and Quartz work surfaces and ample living space, two bedrooms (Master with ensuite shower room) and a principal bathroom.

Within easy reach of public transport links as well as all the shops and amenities that Sutton Coldfield has to offer, the homes are ready to move into now.

### Property Specification

BRAND NEW DEVELOPMENT OF JUST 7 LUXURY  
APARTMENTS  
PLOTS 4 AND 6 AVAILABLE  
SUPERB FITTINGS THROUGHOUT  
CENTRAL SUTTON COLDFIELD LOCATION  
CLOSE TO LOCAL AMENITIES AND PUBLIC TRANSPORT

#### Bathroom

Open Plan Living Room/Kitchen  
4.62m (15'2") x 5.00m (16'5") max

#### Entrance Hall

Bedroom 1 4.87m (16') max x 3.92m (12'10")

#### En-suite

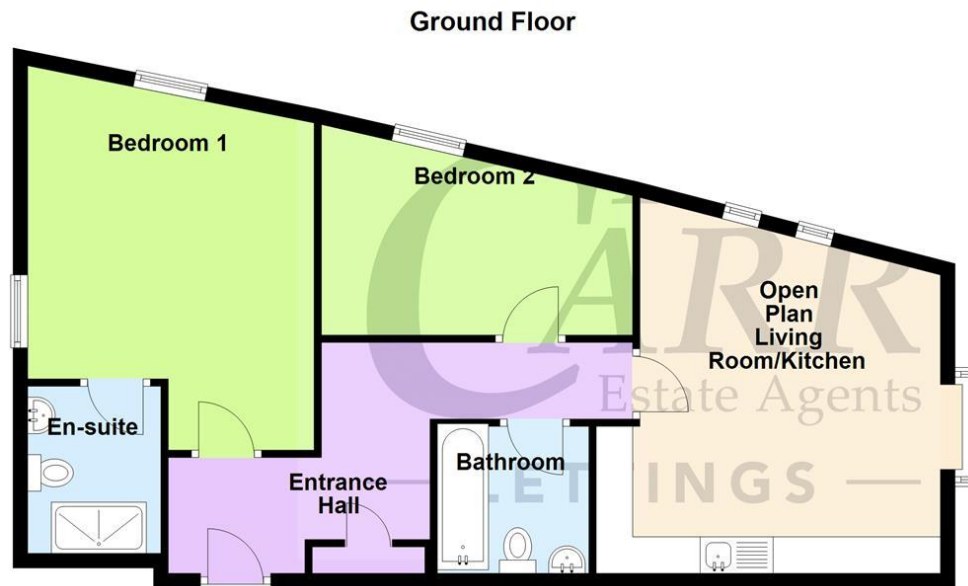
Bedroom 2 4.26m (14') x 2.40m (7'10")





## Floor Plan

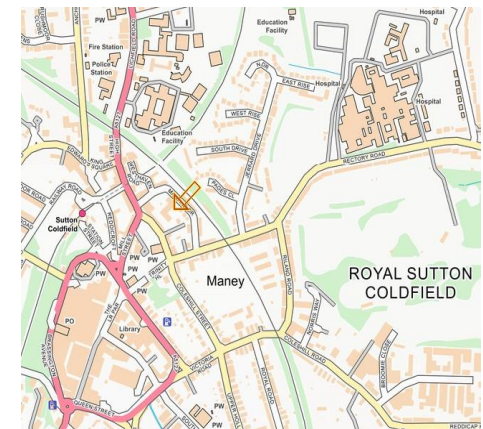
*This floor plan is not drawn to scale and is for illustration purposes only*



## Energy Efficiency Rating

**New  
Instruction  
Awaiting  
E.P.C.**

## Map Location



### Agent's Note:

Every care has been taken with the preparation of these Sales Particulars but they are for general guidance only and complete accuracy cannot be guaranteed. If there is any point which is of particular importance, professional verification should be sought. The mention of any fixtures, fittings and/or appliances does not imply they are in full efficient working order as they have not been tested. All dimensions are approximate. Photographs are reproduced for general information and it cannot be inferred that any item shown is included in the sale. These Sales Particulars do not constitute a contract or part of a contract.  
Came on the market:

### Viewer's Note:

Services connected: Electric, Water, & Drainage  
Council tax band: TBC  
Tenure: Leasehold 125 years  
Ground Rent: N/A  
Service Charge: TBC

