



**A BEAUTIFULLY PRESENTED FOUR BEDROOM DETACHED FAMILY HOME IN THE
SOUGHT-AFTER PINNER HILL ESTATE**

Kingscliffe, Pinner Hill, Pinner, HA5 3XU

ROBSONS

Kingscliffe, Pinner Hill, Pinner, HA5 3XU

**TWO RECEPTION ROOMS • KITCHEN •
UTILITY ROOM • GUEST WC • PRINCIPAL
BEDROOM WITH EN-SUITE • THREE FURTHER
DOUBLE BEDROOMS • FAMILY BATHROOM •
ATTRACTIVE & PRIVATE REAR GARDEN •
OFF-STREET PARKING FOR MULTIPLE VEHICLES
• GARAGE**

Description

Situated in the prestigious and highly desirable Pinner Hill Estate, this exceptional four bedroom, two bathroom detached family home offers generous living space, a beautifully landscaped private rear garden, off-street parking for multiple vehicles, and a garage. This stunning property is within easy reach of excellent state and private primary and secondary schools.

On the ground floor, a bright and spacious entrance hallway leads to a large main reception room featuring patio doors that open out to the garden, flooding the space with natural light. A second reception room with French doors also opens onto the garden, offering a perfect setting for entertaining or relaxing. Additionally, there is a versatile playroom, ideal for growing families or those working from home.





The modern kitchen boasts a wide range of fitted units, integrated appliances, space for a table and chairs and a door leading to a practical utility room.

Upstairs, the property offers a well-appointed principal bedroom with fitted wardrobes and an en-suite shower room. There are three further generously sized double bedrooms and a family bathroom complete with both a bathtub, a separate shower and underfloor heating.

Outside, the rear garden is a true highlight as it backs onto Pinner Hill Golf Course and boasts breath-taking views over central London. The lawn is beautifully manicured and surrounded by mature trees, shrubs, and flowerbeds for ultimate privacy, with a lovely patio area perfect for alfresco dining. To the front, there is a large driveway offering off-street parking for multiple vehicles, a garage, and convenient side access to the rear garden.

Location

Approached via a private road with beautiful lawns and mature trees located on the exclusive 72 acre Pinner Hill Estate, which comprises 115 established and individual family dwellings.

Additional Information

Tenure: Freehold

Local Authority: London Borough of Harrow

Council Tax Band: H

Energy Efficiency Rating: D

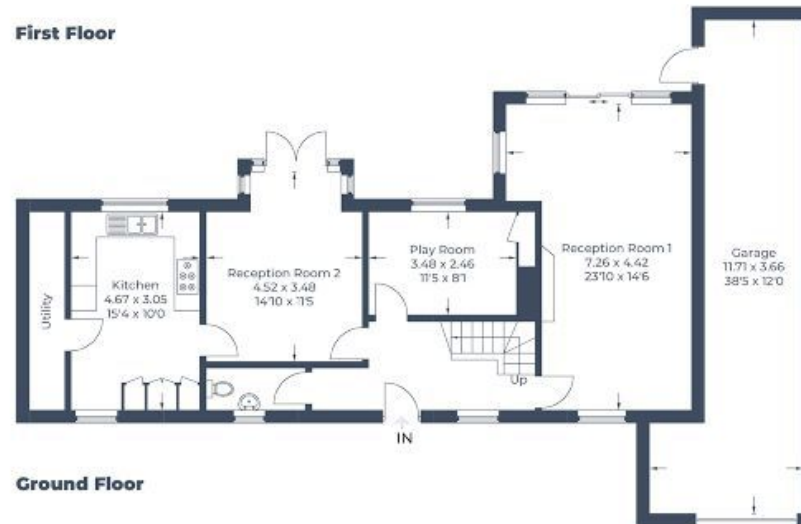
For additional information, please refer to www.robsonsweb.com or call us on: 020 8866 8083.



Approximate Gross Internal Area
 Ground Floor = 87.6 sq m / 943 sq ft
 First Floor = 87.0 sq m / 936 sq ft
 Garage = 30.4 sq m / 327 sq ft
 Total = 205 sq m / 2,206 sq ft



First Floor



Ground Floor

Illustration for identification purposes only,
 measurements are approximate, not to scale.
 © CJ Property Marketing Produced for Robsons

ROBSONS

1 High Street, Pinner HA5 5PJ
 Tel: 020 8866 8083 Email: pinner@robsonswb.com
www.robsonswb.com

SCAN TO VISIT



OUR WEBSITE

Important notice: Robsons, their clients and any joint agents give notice that 1: They are not authorised to make or give any representations or warranties in relation to the property either here or elsewhere, either on their own behalf or on behalf of their client or otherwise. They assume no responsibility for any statement that may be made in these particulars. These particulars do not form part of any offer or contract and must not be relied upon as statements or representations of fact. 2: Any areas, measurements or distances are approximate. Plot sizes and dimensions are taken from Promap and are approximate. The text, photographs and plans are for guidance only and are not necessarily comprehensive. It should not be assumed that the property has all necessary planning, building regulation or other consents and Robsons have not tested any services, equipment or facilities. Purchasers must satisfy themselves by inspection or otherwise.