



**A CHAIN FREE, THREE BEDROOM FAMILY HOME WITH SCOPE TO EXTEND (STPP)**

Rickmansworth Road, Pinner, HA5 3TE

**ROBSONS**



# A CHAIN FREE THREE BEDROOM FAMILY HOME

Rickmansworth Road, Pinner, HA5 3TE

- NO ONWARD CHAIN
- ENTRANCE PORCH & HALLWAY
- TWO RECEPTION ROOMS
- CONSERVATORY
- KITCHEN
- THREE BEDROOMS
- FAMILY BATHROOM, SEPARATE WC
- PRIVATE GARDEN
- OFF-STREET PARKING
- SCOPE TO EXTEND (STPP)

## Description

A chain free, three-bedroom property with great potential and scope to extend (STPP), with generously proportioned interiors, a private rear garden and off-street parking, situated a short distance from Pinner high street, with a number of local schools close by.

The ground floor comprises an entrance porch and hallway with stairs to the first floor and under stair storage, two good-sized reception rooms with one leading through to a generous conservatory, and a galley-style kitchen with an integrated oven. To the first floor there are two double bedrooms with one benefiting from fitted wardrobes, a third bedroom, also with fitted wardrobes, and a family bathroom with a separate WC.







Externally, this property has a private rear garden that is laid to lawn with a patio area. To the front, there is a driveway allowing off-street parking for one car, and shared access along the side of the property to access the garden.

### **Location**

Positioned just footsteps from Pinner Green with the convenience of a Tesco supermarket, with Pinner High Street close by offering an array of boutique shops, restaurants, coffee houses and popular supermarkets. For commuters, transport facilities include local bus links and the Metropolitan Line at both Pinner and Northwood Hills tube stations.

The area is well served by primary and secondary schooling, children's parks/playgrounds and recreational facilities.

### **Additional Information**

Guide Price: Price on Application

Tenure: Freehold

Local Authority: London Borough of Harrow

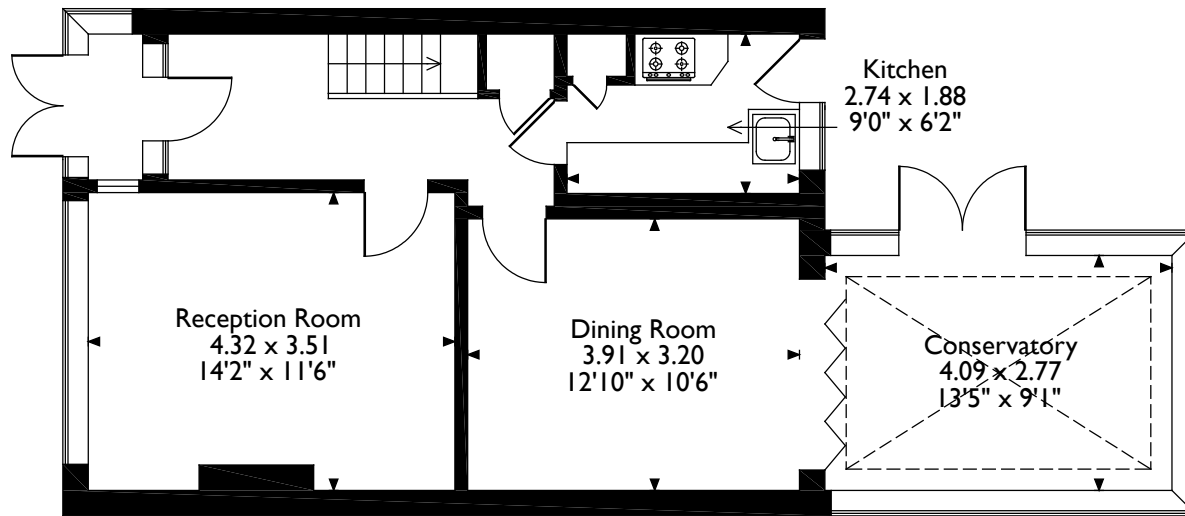
Council Tax: Band E

Energy Efficiency Rating: Band D

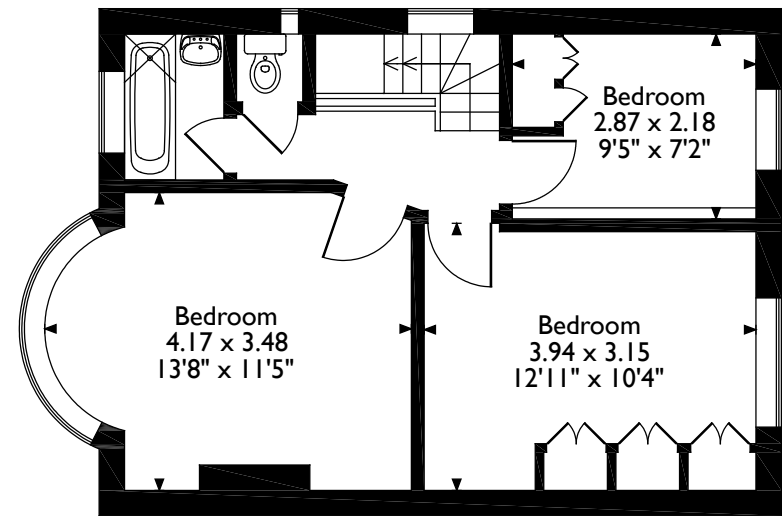


# Rickmansworth Road, Pinner

## Approximate Gross Internal Area 100 Sq M/1077 Sq Ft



**Ground Floor**



**First Floor**

Please note that the location of doors, windows and other items are approximate and this floorplan is to be used for illustrative purposes only. Unauthorized reproduction is prohibited.

**ROBSONS**

1 High Street, Pinner, Middlesex, HA5 5PJ  
Tel: 0208 866 8083 Pinner@robsonswb.com

[www.robsonswb.com](http://www.robsonswb.com)

[www.the-londonoffice.co.uk](http://www.the-londonoffice.co.uk)  
40 ST JAMES'S PLACE SW1