



Chester Road, Castle Bromwich, Birmingham
Over £360,000

Offers



YOUR MOVE
Murray Rogers



IMPORTANT NOTE TO PURCHASERS: We endeavour to make our sales particulars accurate and reliable, however, they do not constitute or form part of an offer or any contract and none is to be relied upon as statements of representation or fact. The services, systems and appliances listed in this specification have not been tested by us and no guarantee as to their operating ability or efficiency is given. All measurements have been taken as guide to prospective buyers only, and are not precise. Floor plans where included are not to scale and accuracy is not guaranteed. If you require clarification or further information on any points, please contact us, especially if you are travelling some distance to view. Fixtures and fittings other than those mentioned are to be agreed with the seller.



Description

*** DETACHED HOME *** SOUTH FACING REAR GARDEN ***

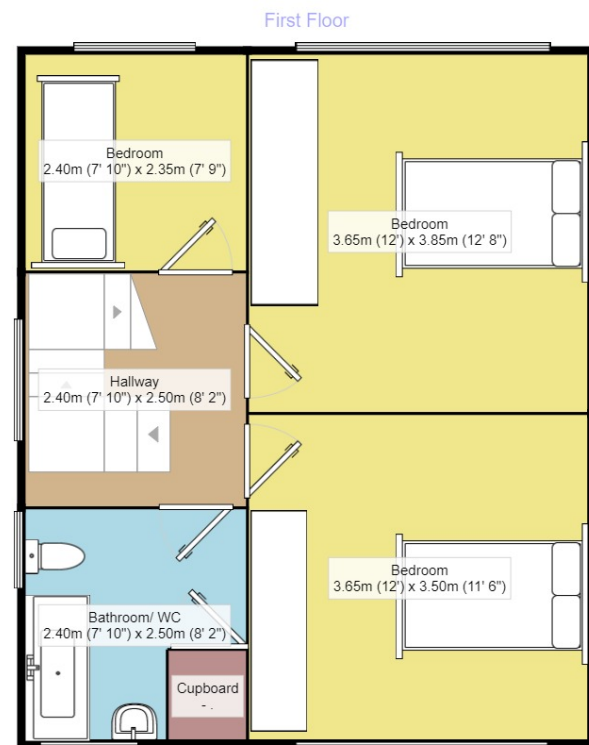
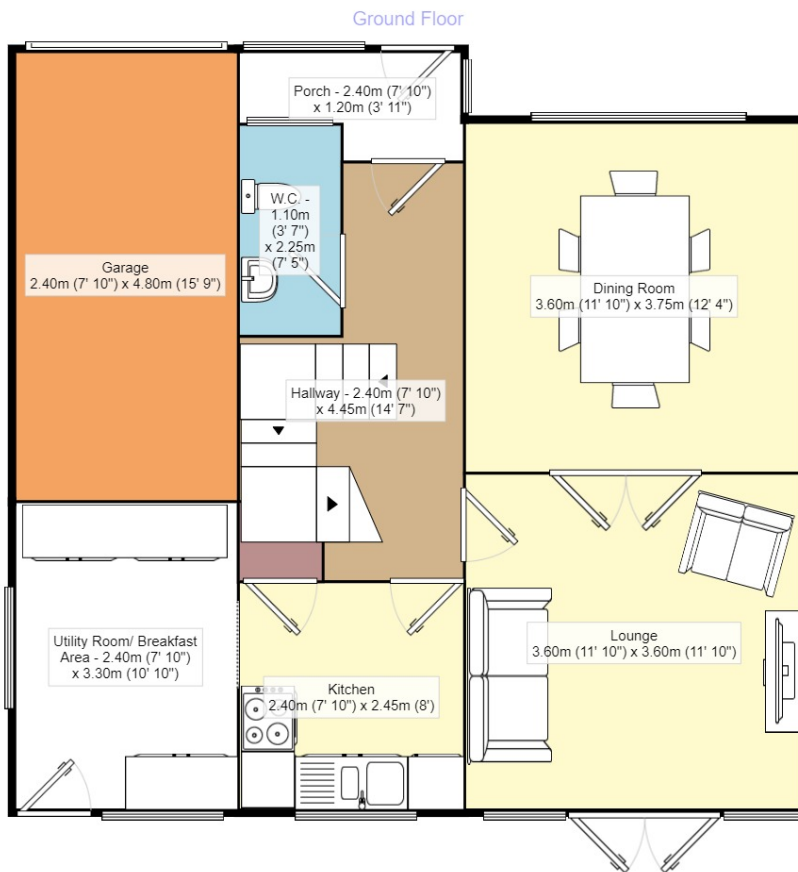
Situated On The Ever Popular Chester Road And Within Close Proximity To Local Amenities - This Immaculately Presented Detached Home Briefly Comprises Of A New Entrance Porch, Inner Hall Way, A Spacious Front Reception Room With Double Door Entry To The Rear Reception Room, A Modern Fitted Kitchen With A Utility Room/ Breakfast Area And A Downstairs W.C. To The First Floor There Are Three Generously Sized Bedrooms (Two Doubles And One Single - Master Bedroom With Fitted Wardrobes) And A Family Bathroom/ WC With Shower Attachment And Storage Cupboard - All Accessed From The Landing Which Boasts Of Plenty Of Natural Light. This Tastefully Decorated Property Also Benefits From Gas Central Heating, Double Glazing, Ample Off Street Parking For Multiple Vehicles, A Side Garage Offering Potential For Improvements/ Conversions Or Extensions (SUBJECT TO PLANNING PERMISSION) And A SOUTH FACING And Enclosed Rear Garden. EPC RATING - D *** VIEWING BY APPOINTMENT ONLY ***

Council Tax

EPC

DETACHED PROPERTY

For full EPC please contact the branch.



Measurements are approximate. Not to scale. For illustrative purposes only.

256 Chester Road, Castle Bromwich, Birmingham, B36 0JE

0121 7474 746 * castlebromwich@your-move.co.uk



YOUR MOVE

Murray Rogers

your-move.co.uk