



Madeira Avenue, Horsham

3 Bedroom Home Close to Town Centre



- ▶ 3 bedroom semi detached house
- ▶ 2 spacious reception rooms
- ▶ Character features throughout
- ▶ Low maintenance rear garden
- ▶ Converted loft room with en suite
- ▶ 2 minute walk from Horsham town centre
- ▶ Recently fitted kitchen
- ▶ Spacious recently fitted bathroom
- ▶ Permit parking available

Henry Adams Lettings in Horsham are thrilled to offer this well presented and recently updated three double bedroom, 2 bathroom semi-detached house split over 3 floors situated just 2 minute walk from Horsham Town Centre and 5 minutes from Horsham Train Station.

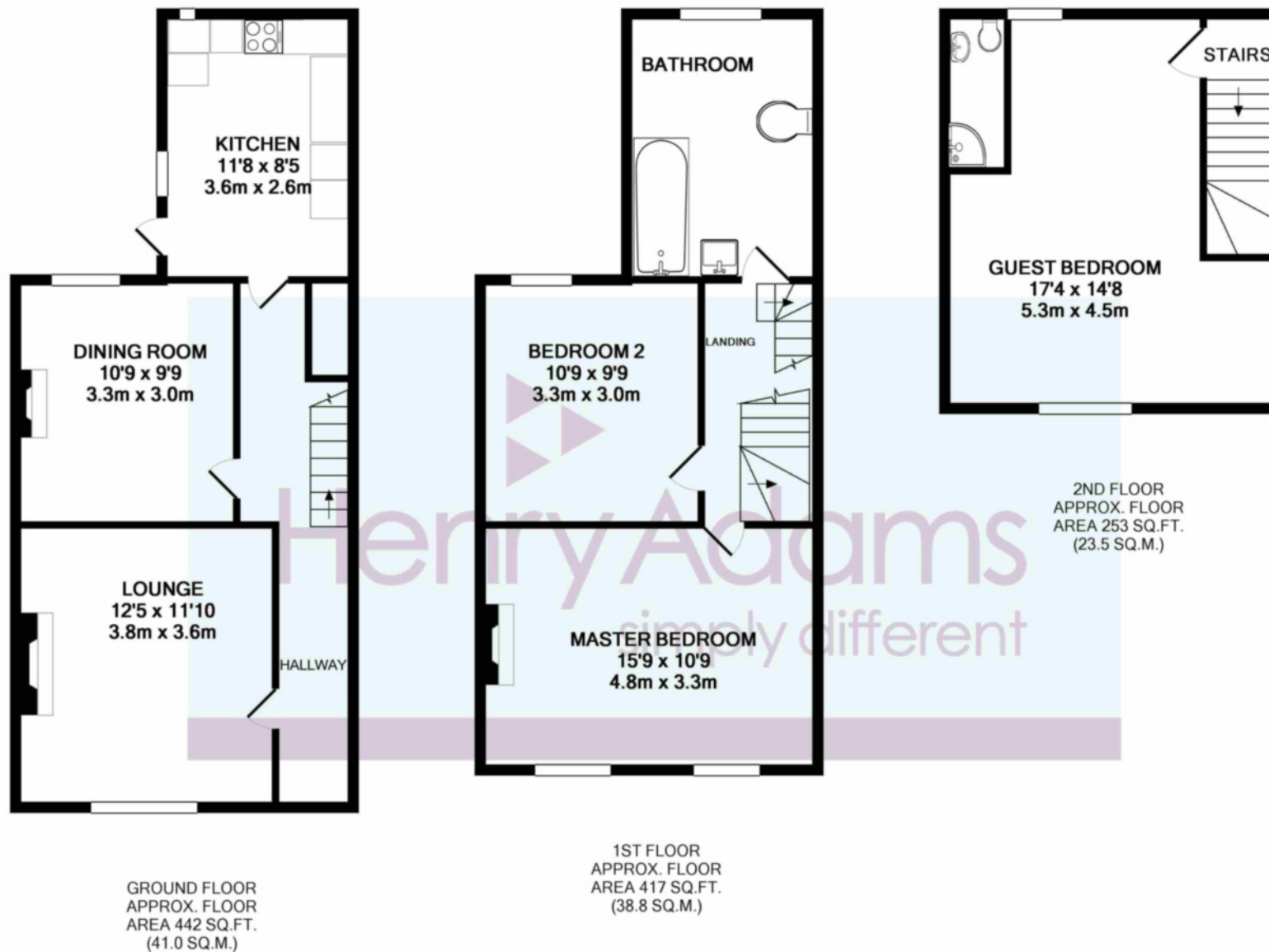
Accommodation briefly comprises bright entrance hallway, living room with feature fireplace (not working) and bay window, a separate dining room with large windows, recently installed kitchen with integrated oven, hob and extractor fan and door leading to rear garden.

The first floor continues with recently updated bathroom with 'white suite' and contemporary tiles and glass shower screen, an extremely spacious third bedroom with views to the rear garden, and a large second bedroom with two large windows and ample space for wardrobes.

The second floor consists of a beneficial master bedroom in the eaves with a recently installed en suite shower room.

Outside, the property has a low maintenance rear garden with a spacious patio/seating area and a divided section laid to lawn with timber storage shed. Side access is provided for bin collection.





MADEIRA AVENUE, HORSHAM, WEST SUSSEX, RH12
TOTAL APPROX. FLOOR AREA 1112 SQ.FT. (103.3 SQ.M.)

Whilst every attempt has been made to ensure the accuracy of the floor plan contained here, measurements of doors, windows, rooms and any other items are approximate and no responsibility is taken for any error, omission, or mis-statement. This plan is for illustrative purposes only and should be used as such by any prospective purchaser. The services, systems and appliances shown have not been tested and no guarantee as to their operability or efficiency can be given

Agents Note - Our particulars are for guidance only and are intended to give a fair overall summary of the property. They do not form part of any contract or offer, and should not be relied upon as a statement or representation of fact. Measurements, areas and distances are approximate only. Photographs may include lifestyle shots and pictures of local views. No undertaking is given as to the structural condition of the property, or any necessary consents or the operating ability or efficiency of any service, system or appliance. Please ask if you would like further information, especially before you travel to the property.

Location

Madeira Avenue is situated just a 2 minute walk from Horsham town centre and is the ideal location for those commuting to London as it is just a 5 minute walk to Horsham train station. Permit parking is available with this property, but for more information, please speak to Horsham District Council.

Directions

If you are coming from Horsham town centre, drive down Albion Way towards the RSA bridge.

At the roundabout before the RSA bridge, take the second exit on the left-hand-side, just after the exit for Horsham Superbowl. This is Madeira Avenue.

