



Low Road | Norwich | NR9 4AP  
£1,100 PCM

twgaze

# Low Road | Norwich | NR9 4AP £1,100 PCM

Nestled in the charming village of Carleton Forehoe, Norwich, this delightful semi-detached period cottage offers a perfect blend of character and modern living.

Upon entering, you will find a well-proportioned reception room that exudes warmth and character, making it an inviting space for both relaxation and entertaining.

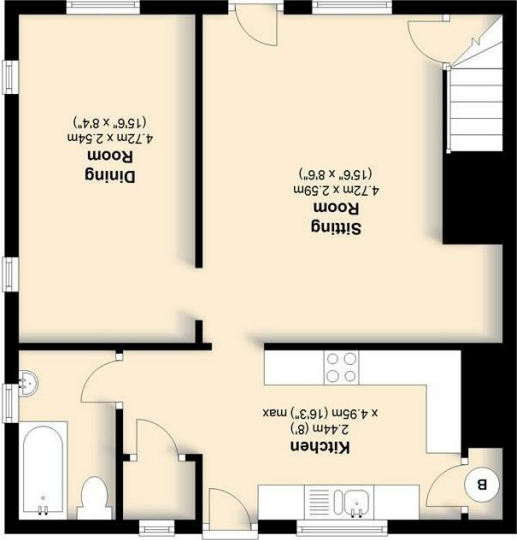
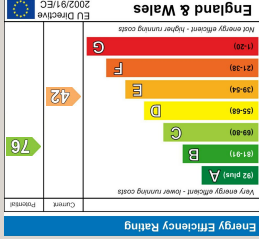
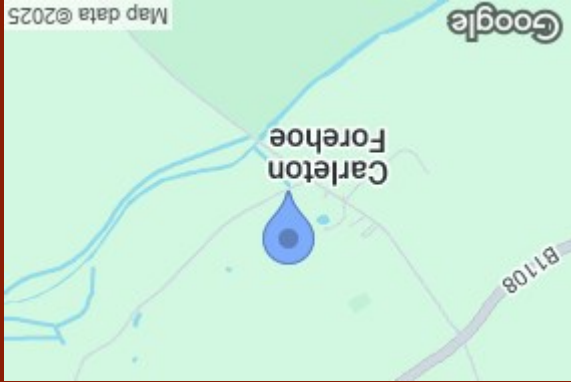
Outside, the property is equally impressive. A spacious driveway offers parking for several vehicles.

The property is equipped with mains water and electricity, while private shared drainage and oil-fired central heating ensure comfort throughout the seasons.

- Period cottage with character
- Neutral decor throughout
- Driveway for several cars
- Spacious shed included
- Oil fired central heating
- Modern fitted kitchen
- Overlooks fields beyond
- Large lawn and rear yard
- Mains water and electricity
- Semi-detached house style







Total area: approx. 81.8 sq. metres (880.8 sq. feet)

2 Low Road, Carleton Forehoe

33 Market Street  
Wymondham  
Norfolk  
NR18 0AJ  
01953 423188