



4 Greenfields Way

Carlton-in-lindrick, Worksop, , S81 9TD

Detached House

EPC Rating: C

Property Features

- **Four Bedrooms**
- **Popular location**
- **Master With Ensuite**
- **Downstairs W.C**
- **Two Reception Rooms**
-
- **Rear enclosed garden**
-
- **Driveway**
-

Full Description

LOUNGE 15' 05" x 10' 04" (4.7m x 3.15m)

With front facing bay window, fire surround, laminate flooring and a central heating radiator.

DINING ROOM 9' 02" x 8' 03" (2.79m x 2.51m)

With French doors leading out onto the rear garden, laminate flooring and central heating radiator.

RECEPTION ROOM TWO / PLAY ROOM 15' 06" x 7' 00" (4.72m x 2.13m)

With front facing window, laminate flooring and central heating radiator.

KITCHEN 9' 02" x 9' 01" (2.79m x 2.77m)

With a good range of wall and base units incorporating stainless steel sink with mixer tap, built in oven with gas hob, integrated dishwasher, tiled flooring, rear facing window, storage cupboard/pantry and a central heating radiator.

UTILITY ROOM With plumbing for washing machine and space for fridge freezer.

DOWNSTAIRS W.C With Rear facing window and central heating radiator.

BEDROOM ONE 11' 06" x 11' 05" (3.51m x 3.48m)

With front facing window, laminate flooring and central heating radiator.

ENSUITE Ensuite shower room being fully tiles, with front facing window and chrome towel rail.

BEDROOM TWO 10' 7" x 11' (3.23m x 3.35m)

With front facing window, storage cupboard, laminate flooring and central heating radiator.

BEDROOM THREE 9' 01" x 7' 07" (2.77m x 2.31m)

With rear facing window, storage cupboard, laminate flooring and central heating radiator.

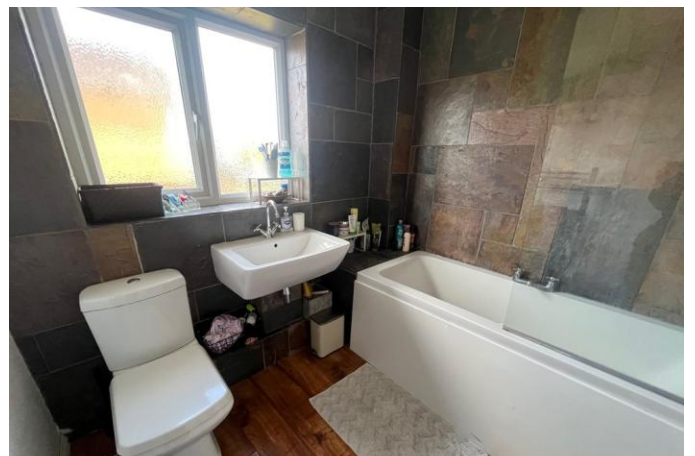
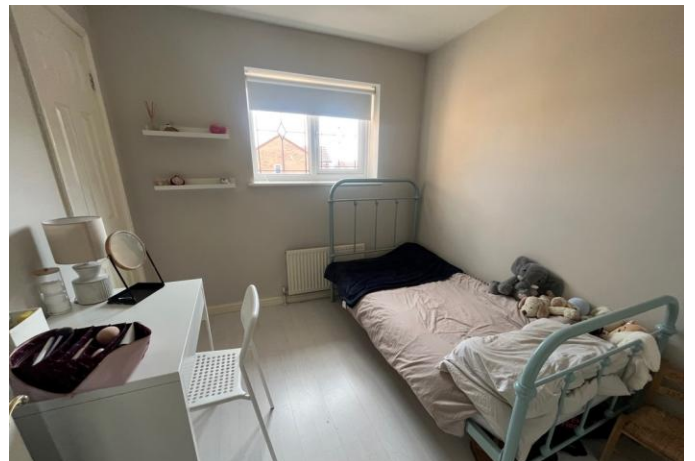
BEDROOM FOUR 8' 00" x 7' 01" (2.44m x 2.16m)



With rear facing window, laminate flooring and central heating radiator.

BATHROOM With three piece suite including over bath shower, rear facing window and chrome towel rail.

OUTSIDE Front driveway. Rear enclosed garden with patio area, lawn and shed.





01909 772777

www.**1stfieldproperties**.co.uk email:

81 Wales Road, Kiveton Park, Sheffield, South Yorkshire, S26 6RA



Agents Note: Whilst every care has been taken to prepare these sales particulars, they are for guidance purposes only. All measurements are approximate are for general guidance purposes only and whilst every care has been taken to ensure their accuracy, they should not be relied upon and potential buyers are advised to recheck the measurements