

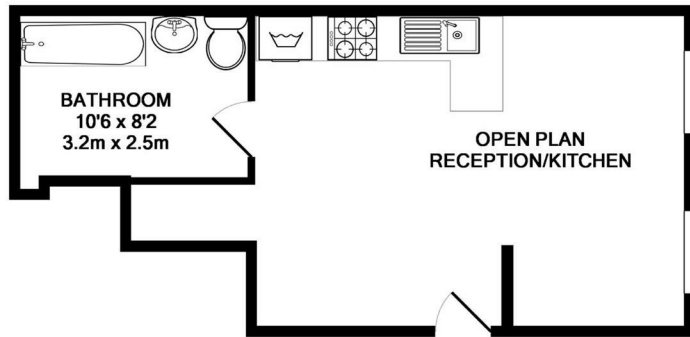


Holly Lane, Goodmayes IG3 9BF

£1,100 Per Month

**KURTIS**  
PROPERTY

- Studio Flat
- Open-Plan Kitchen
- Open-Plan Lounge/Bedroom
- Double Glazed
- Unfurnished / Possibly Furnished
- Ground Floor
- Close to Goodmayes Station
- Good Condition
- Gas Central Heating
- Available Immediately



TOTAL APPROX. FLOOR AREA 420 SQ.FT. (39.0 SQ.M.)

Whilst every attempt has been made to ensure the accuracy of the floor plan contained here, measurements of doors, windows, rooms and any other items are approximate and no responsibility is taken for any error, omission, or mis-statement. This plan is for illustrative purposes only and should be used as such by any prospective purchaser. The services, systems and appliances shown have not been tested and no guarantee as to their operability or efficiency can be given  
Made with Metropix ©2017

## THE PROPERTY

Kurtis Property are pleased to present to rent this ground floor studio flat situated close to Goodmayes Elizabeth Line station for £1,100pcm.

Accommodation offers open plan lounge/bedroom/kitchen, separate bathroom with shower attachment, gas central heating and double glazing.

The property is available for immediate occupation, unfurnished/possibly furnished.

\*TENANCY TERM 12 MONTHS\*

\*COUNCIL TAX BAND B\*

600 Green Lane, Ilford, IG3 9SQ

020 8598 2214

info@kurtisilford.co.uk

www.kurtisproperty.co.uk

**KURTIS**  
PROPERTY