

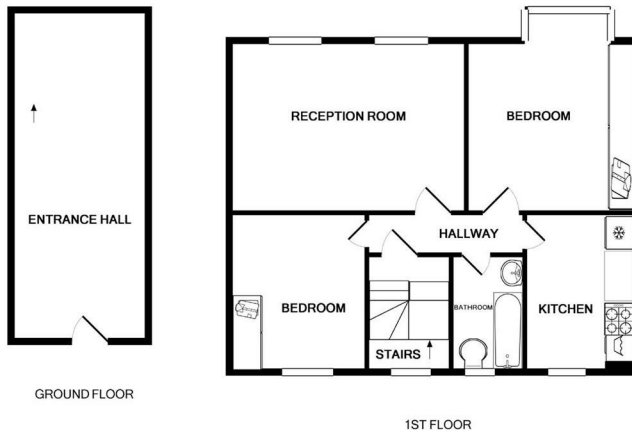


4 Ashgrove Road, Goodmayes IG3 9XE

£1,800 PCM

KURTIS
PROPERTY

- Two Double Bedroom Flat
- Large Reception
- Bathroom
- Gas Central Heating
- Off Street Parking
- Under 200 Yards From Goodmayes Elizabeth Line Station
- Fitted Kitchen
- Fitted Wardrobes in Both Bedrooms
- Double Glazed Windows
- Available Immediately



TOTAL APPROX. FLOOR AREA 635 SQ.FT. (59.0 SQ.M.)

Whilst every attempt has been made to ensure the accuracy of the floor plan contained here, measurements of doors, windows, rooms and any other items are approximate and no responsibility is taken for any error, omission, or mis-statement. This plan is for illustrative purposes only and should be used as such by any prospective purchaser. The services, systems and appliances shown have not been tested and no guarantee as to their operability or efficiency can be given

Made with Metropix i2017

THE PROPERTY

Kurtis Property are pleased to rent this two double bedroom flat located on Ashgrove Road, Goodmayes, IG3 for £1,800pcm.

The property comprises a large reception, fitted kitchen, bathroom & two double bedrooms with fitted wardrobes.

Benefits include off street parking, double glazed windows and gas central heating.

Available IMMEDIATELY, offered as unfurnished.

COUNCIL TAX BAND C

EPC RATING D

600 Green Lane, Ilford, IG3 9SQ

020 8598 2214

info@kurtisilford.co.uk

www.kurtisproperty.co.uk

KURTIS
PROPERTY