



Emporium Court, Harrow HA2 9DL

£1,900 Per Month

**KURTIS**  
PROPERTY

- Luxury Apartment
- Close To Local Amenities
- Main Bathroom & En-Suite Shower
- Thermostatically Controlled Underfloor Heating Throughout
- Large Lounge
- Ready For Immediate Occupation
- Italian Designed Kitchen With Integrated Appliances
- Video Door Entry System & Lifts
- Two Bedrooms & Balcony
- Communal Courtyard Garden

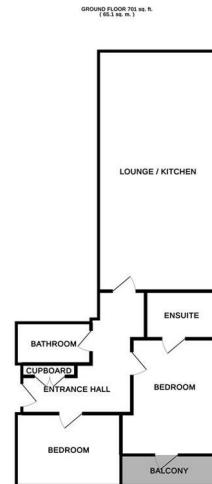
## THE PROPERTY

Kurtis Property are pleased to present to rent this luxury two bedroom apartment located in the popular Matrix Court, Alexandra Road for £1,900pcm.

The property comprises one double bedroom, one single bedroom, modern fitted kitchen with integrated appliances, good size lounge, family bathroom & further en-suite

Benefits include private balcony, underfloor heating, communal gardens, underground parking space, lift access & entryphone system. Close to local shops, schools and good transport links

Matrix Village offers residents the chance to form an exclusive community in Harrow, with an exciting collection of apartments occupying a commanding corner position. The architectural style has been carefully devised to be sympathetic to its surroundings yet distinctive enough to mark Matrix Village as a forward-thinking landmark development. Interesting roof lines, balconies and generous glazing benefit those viewing



TOTAL FLOOR AREA: 701 sq. ft. (65.1 sq. m.) approx.  
 Measurements are approximate and should not be used for any legal or financial purposes. Measurements are taken to the internal face of walls, doors and windows, and do not include the area of the entrance hall, lift shaft, stairs and common areas, and do not include the area of the entrance hall, lift shaft, stairs and common areas, and do not include the area of the entrance hall, lift shaft, stairs and common areas.  
 www.kurtisproperty.co.uk

600 Green Lane, Ilford, IG3 9SQ  
 020 8598 2214  
 info@kurtisilford.co.uk  
 www.kurtisproperty.co.uk

**KURTIS**  
 PROPERTY