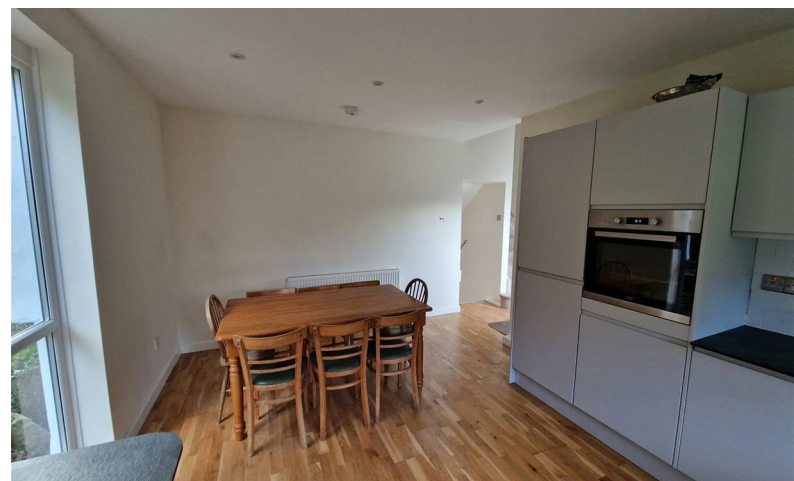


Philip Martin

LETTINGS LIMITED



GERRANS HILL, PORTSCATHO

£1,500 PCM

www.philip-martin.co.uk

ELLENGLAZE, 11 GERRANS HILL, PORTSCATHO, TRURO, CORNWALL, TR2 5EE

A light and airy split-level home, with lovely sea views, situated in a sought after coastal village. The house is end-terrace and in a quiet position. The entrance hall leads into an open plan kitchen/dining area. Downstairs the sitting room has patio doors, opening onto the back garden, enjoying sea views. The house has 3 double bedrooms, all with sea views, and one bathroom and one shower room. There are well fenced, dog-friendly, gardens to front and rear, as well as a detached garage and an additional parking space. Pets will be considered.

- Oil Fired Central Heating
- Pets Considered
- Available Mid September
- Council Tax Band D
- Gardens to Front and Rear
- Double Glazed Windows
- Garage
- Deposit £1730
- EPC E
- Initial Fixed Term of 6 Months

KITCHEN/DINING ROOM

LOUNGE

SHOWER ROOM

BEDROOM 1

BEDROOM 2

BEDROOM 3

BATHROOM

CREDIT REFERENCES AND DEPOSIT

Prospective tenants will be required to complete an application form and if successful will have to pay a holding deposit equivalent to 1 weeks rent. At that stage we will carry out a credit reference and only once the referencing is successfully completed will the property be formally offered. Prior to occupation the balance of the first months rent and a deposit equivalent to 5 weeks rent will be payable.

DIRECTIONS

From Gerrans proceed down the hill towards Portscatho and turn right into Gerrans Hill where the property will be found towards the end on the left.

CONTACT US

6 Cathedral Lane
Truro
Cornwall
TR1 2QS

01872 272716

lettings@philip-martin.co.uk

