



Guide Price £550,000 Freehold

A beautifully presented home in a select development with stunning views of the South Downs and the National Park



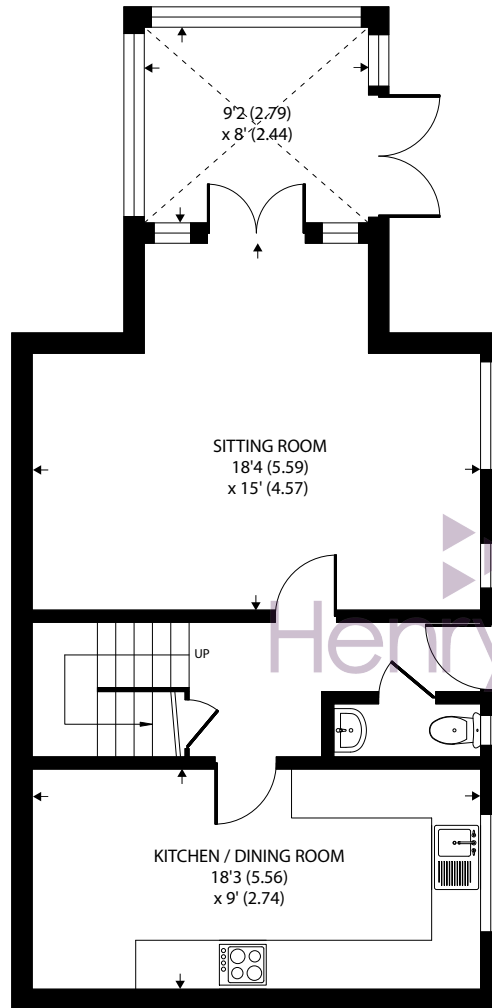
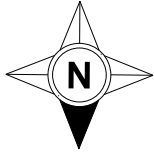
- ▶ **Sitting room with feature fireplace**
- ▶ **Conservatory opening to garden**
- ▶ **Re-fitted kitchen / dining room with integrated appliances**
- ▶ **Ground floor cloakroom**
- ▶ **Main bedroom with balcony and views to the Downs**
- ▶ **Second double bedroom**
- ▶ **En-suite shower room and separate bathroom**
- ▶ **Allocated parking and visitors parking**
- ▶ **Beautifully maintained communal gardens**

This charming 2-bedroom semi-detached house is a lovely home within a small development with spectacular views of the picturesque South Downs and National Park.

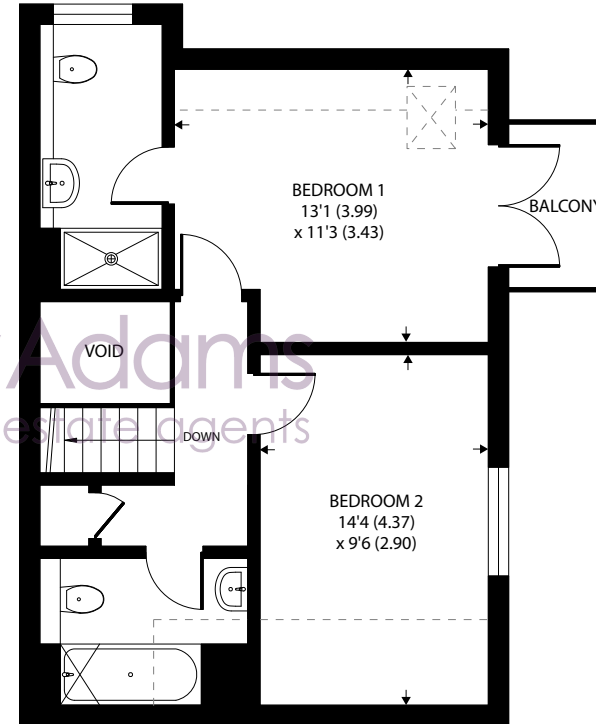
The property has a cosy sitting room featuring a charming feature fireplace, perfect for relaxing evenings, double doors open to the conservatory which offers a seamless transition to the well-maintained garden, creating an ideal space for indoor-outdoor living. The re-fitted kitchen/dining room comes complete with integrated appliances including a washer / dryer, dishwasher, oven and combination microwave oven and space for a fridge / freezer. Additionally, the ground floor cloakroom and large understairs coat cupboard are both useful additions.

Moving to the first floor, the main bedroom beckons with a private balcony that overlooks the breath taking South Downs, offering a serene retreat. The second double bedroom is also of a very good size with views. Both the en-suite shower room to the main bedroom and separate bathroom have been thoughtfully designed and exude a sense of modern elegance. The property has allocated parking along with visitors parking and is surrounded by beautifully manicured communal gardens, providing a tranquil setting for residents to unwind and enjoy the outdoors.





GROUND FLOOR



FIRST FLOOR

Denotes restricted head height

Approximate Area = 988 sq ft / 91.7 sq m (excludes void)

Limited Use Area(s) = 70 sq ft / 6.5 sq m

Total = 1058 sq ft / 98.2 sq m

For identification only - Not to scale



Agents Note - Our particulars are for guidance only and are intended to give a fair overall summary of the property. They do not form part of any contract or offer, and should not be relied upon as a statement or representation of fact. Measurements, areas and distances are approximate only. Photographs may include lifestyle shots and pictures of local views. No undertaking is given as to the structural condition of the property, or any necessary consents or the operating ability or efficiency of any service, system or appliance. Please ask if you would like further information, especially before you travel to the property.

The outside space of this property offers a haven of tranquillity and serenity, ideal for both relaxation and entertaining. The well-maintained private garden, provides a peaceful retreat to enjoy the fresh air and beautiful surroundings. Whether unwinding after a long day or hosting gatherings with loved ones, the outdoor space offers a versatile setting for various activities. The communal gardens are meticulously tended to, enhancing the overall aesthetic appeal of the property and creating a welcoming environment for all who reside here.

Location

Storrington village lies in the lea of the South Downs National Park and has an established range of shops including Waitrose, Costa and a number of independent shops and HSBC bank. There is a health centre and various sporting activities including football club, Pulborough Rugby Club, tennis club and not forgetting the South Downs for walking or cycling or the National Trust Sullington Warren or Sandgate Country Park. The towns of Horsham and Worthing are about 15 and 11 miles respectively with good access to the A24.

The area around provides a wider range of sporting and recreational facilities with West Sussex Golf Club and other golf clubs further afield at Cowdray Park and Goodwood. Of special note is the RSPB nature reserve at Wiggonholt Brooks. The area also has bowls and cricket clubs. There is gliding at nearby Parham, theatres at Chichester, Horsham and Worthing and sailing centres all along the coast.

