



Offers over £170,000

A spacious 2 bedroom retirement apartment located within easy reach of the village amenities.

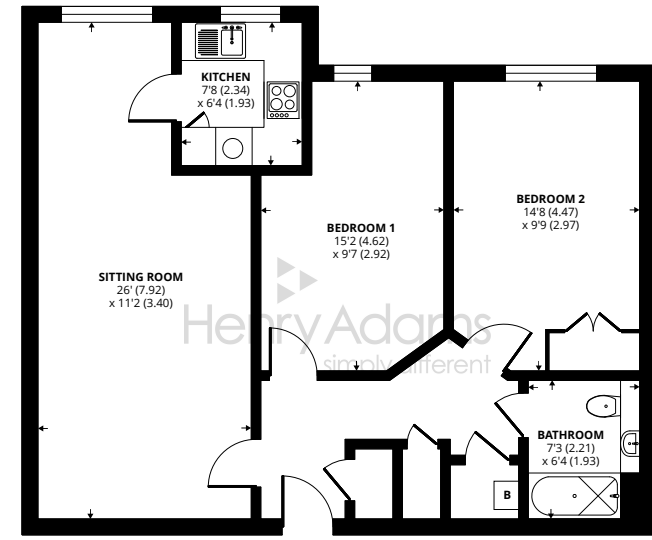


- ▶ No chain
- ▶ Sought after development
- ▶ Communal gardens
- ▶ Residents parking
- ▶ Store room
- ▶ Lift to upper floors
- ▶ Two double bedrooms
- ▶ Close to amenities
- ▶ Residents lounge
- ▶ Landry Room

Pegasus Court forms part of a prestigious retirement development situated within a short walk of the main shopping area in the High Street.

The development has a distinct luxurious feel with a welcoming entrance and comprises a second floor apartment which is available with immediate vacant possession. The generous sized hall includes a cloaks cupboard, deep built in storage cupboard and airing cupboard. The expansive lounge/dining room is graced with a decorative fireplace feature providing an attractive focal point off which is a well fitted kitchen with a range of light timber styled units and built in appliances. Both bedrooms are of double size, served by a well appointed bathroom in a white scheme with a shower over the bath. The property also benefits from a communal laundry room and a dedicated store room on the ground floor.

The lease has 105 years unexpired and the ground rent payable is £400 and the service charges of £5,671 per annum.



FIRST FLOOR

Approximate Area = 765 sq ft / 71 sq m
For identification only - Not to scale

