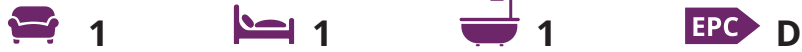




Guide Price £139,950 Leasehold

A first floor flat in attractive warden assisted courtyard development within the village centre.

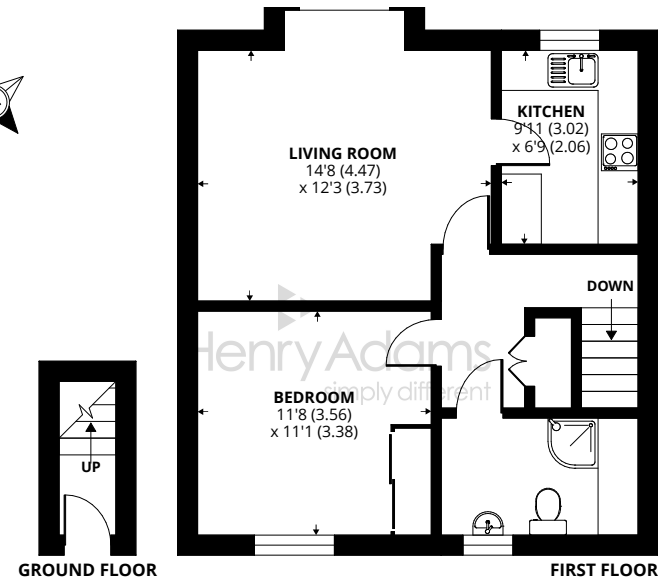


- ▶ Sitting room with bay window
- ▶ Kitchen
- ▶ Double bedroom with wardrobe
- ▶ Shower room
- ▶ Lease of 151 years (recently extended)
- ▶ Close to village amenities
- ▶ Communal residents lounge
- ▶ No forward chain

Situated just off the village High Street the development is centrally located with most shops and amenities being within a short walk. The flat offers well proportioned rooms with a double bedroom with fitted wardrobe and enjoys a pleasant outlook from the sitting room to the communal courtyard.

Storrington village lies in the lea of the South Downs and has an established range of shops including Waitrose, Costa and a number of independent shops and HSBC bank. There is a health centre and various sporting activities including football club, Pulborough Rugby Club, tennis and squash club and not forgetting the South Downs for walking or cycling or the National Trust Sullington Warren or Sandgate Country Park. The towns of Horsham and Worthing are about 15 and 11 miles respectively with good access to the A24.

The area around provides a wider range of sporting and recreational facilities with West Sussex Golf Club and other golf clubs further afield at Cowdray Park and Goodwood. Of special note is the RSPB nature reserve at Wiggonholt Brooks. The area has also has bowls and cricket clubs. There is gliding at nearby Parham, theatres at Chichester, Horsham and Worthing and sailing centres all along the coast.



Approximate Area = 564 sq ft / 52.4 sq m  
For identification only - Not to scale

