



The Copse

Chingford London E4 6BH

- Available 21st June
- First floor
- Garden
- Two double bedrooms
- Chingford station within walking distance
- Unfurnished
- Balcony
- Quiet cul-de-sac
- Kitchen/breakfast room
- Close to Whitehall Plain

£346 Per Week

The Copse

Chingford London E4 6BH



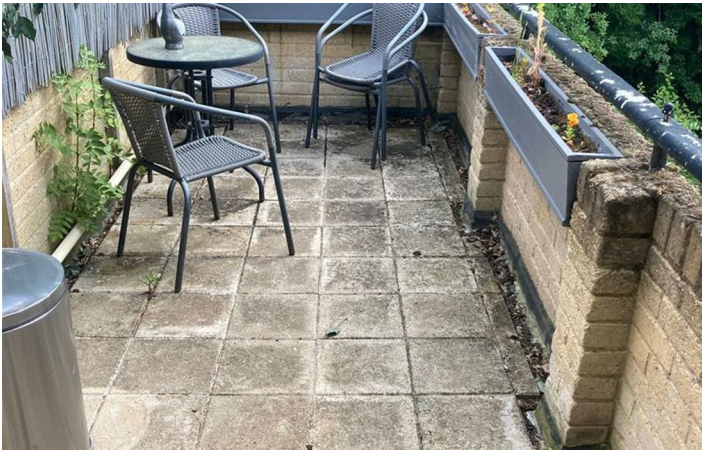
Available from the 21st of June on an unfurnished basis is this purpose built first floor maisonette with balcony and own section of a mature rear garden backing onto woodland.

The 76 sqm property, which is located in a quiet cul-de-sac, offers a reception room, fitted kitchen/breakfast room with a door leading onto the rear balcony, two double bedrooms and a tiled bathroom.

Chingford (Weaver line) station is within walking distance and provides regular services at under thirty minutes journey time into Liverpool Street station whilst the open space of nearby Whitehall Plain is popular amongst walkers many of whom enjoy a well earned post exercise drink in the nearby Queen Elizabeth pub.



Directions





Floor Plan

These particulars, whilst believed to be accurate are set out as a general outline only for guidance and do not constitute any part of an offer or contract. Intending purchasers should not rely on them as statements of representation of fact, but must satisfy themselves by inspection or otherwise as to their accuracy. No person in this firms employment has the authority to make or give any representation or warranty in respect of the property.

