



22 Park Crescent London W1B 1PE

- Available 16th May
- First floor
- 24 hour Concierge
- Dual aspect
- Heating and hot water included
- Furnished
- Lift
- 35 sqm
- Recently refurbished
- Regent's Park station two minutes away

£576 Per Week

22 Park Crescent

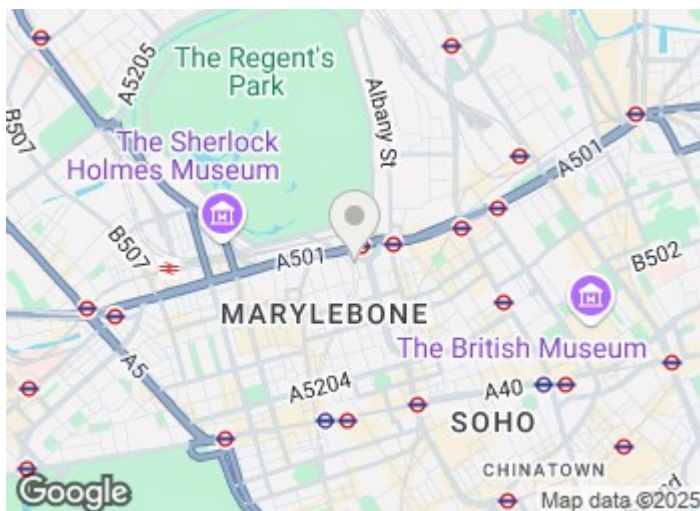
London W1B 1PE



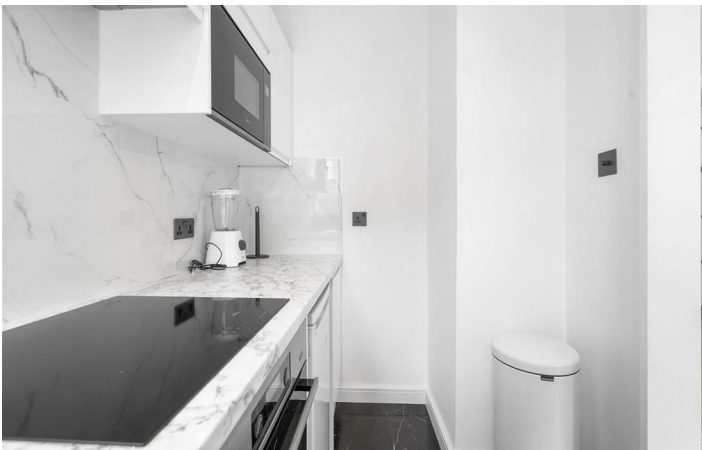
Available from the 16th of May on a furnished basis is this very well presented first floor studio flat with lift and 24 hour concierge in Marylebone.

The recently refurbished 35 sqm Georgian property which has wood flooring throughout briefly comprises a dual aspect studio room with fitted wardrobes, a modern fitted kitchen with integrated appliances and a fully tiled bathroom.

Park Crescent is a prime London address within walking distance of Regents Park (Bakerloo line) and Great Portland Street (Metropolitan, Circle, Hammersmith & City lines) stations, bars and highly regarded restaurants whilst open space can be found in glorious Regent's Park.

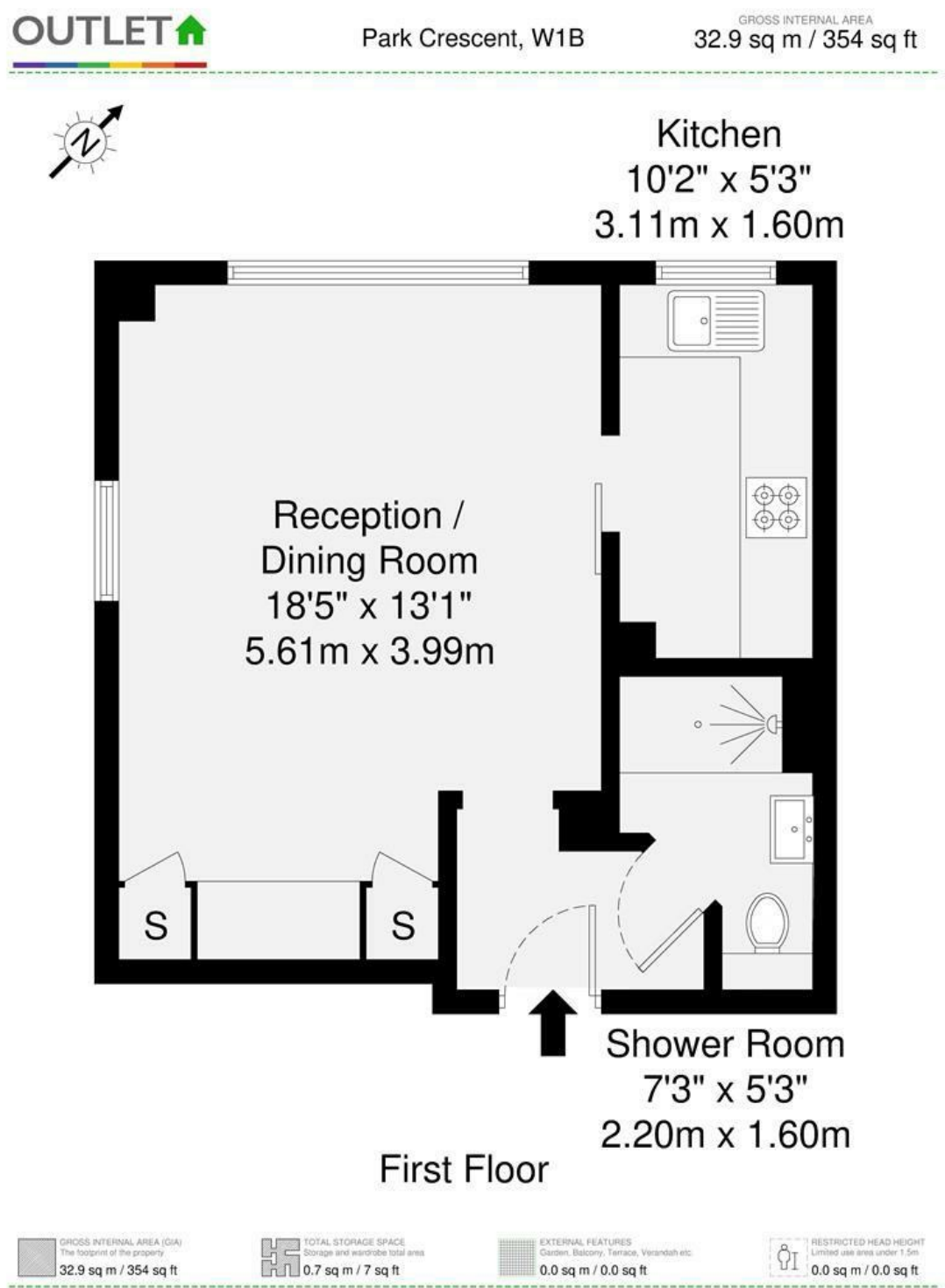


Directions





Floor Plan



Disclaimer : Floorplan measurements are approximate and are for illustrative purposes only. While we do not doubt the floorplan accuracy and completeness, you or your advisors should conduct a careful, independent investigation of the property in respect of monetary valuation.

Maison VUE

These particulars, whilst believed to be accurate are set out as a general outline only for guidance and do not constitute any part of an offer or contract. Intending purchasers should not rely on them as statements of representation of fact, but must satisfy themselves by inspection or otherwise as to their accuracy. No person in this firms employment has the authority to make or give any representation or warranty in respect of the property.

