

# OUTLET

## RESIDENTIAL



## Rainville Road

London W6 9UF

- A spectacularly spacious two-bedroom, two-bathroom Duplex apartment
- Duplex apartment arranged over the Ground and Lower ground floors
- A newly converted, warehouse style, gated development on the River Thames.
- On offer is over 1200 sq/ft of luxury living
- The fully fitted Metris Kitchen is complete with Miele appliances
- A Caple wine cooler
- Automatic lighting throughout
- A Crestron audio visual system
- A digital video door entry system
- Pre-wiring for Sky + TV.

**£1,622 Per Week**

# Rainville Road

London W6 9UF



Available Now.

A spectacularly spacious two-bedroom, two-bathroom Duplex apartment arranged over the Ground and Lower ground floors with its fabulous entertaining area is all set within this newly converted, warehouse style, gated development on the River Thames.

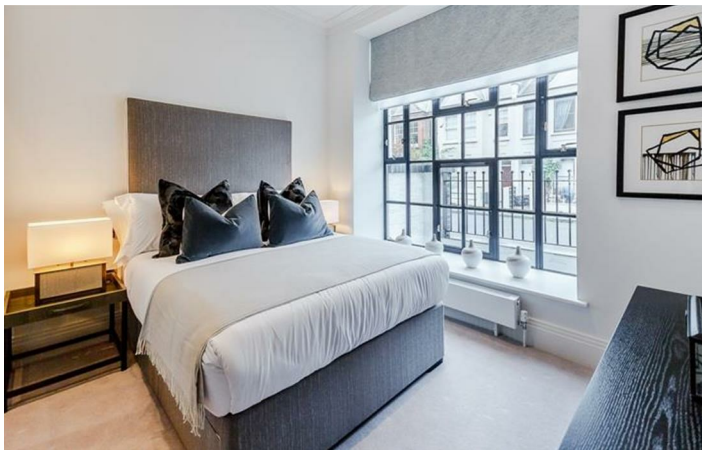
On offer is over 1200 sq/ft of luxury living including two bedrooms both with en suite bathrooms, a double reception room opening onto a small private space along with a glass floor area revealing the show stopping lower level which comprises the kitchen/diner and all-round entertaining space complete with WC. The fully fitted Metris Kitchen is complete with Miele appliances including an integrated dishwasher, washer/dryer, full height fridge freezer, oven, hob and integrated extractor fan as well as a Caple wine cooler. The bathrooms comprise of full bathroom suites with underfloor heating whilst the bedrooms boast bespoke mirrored wardrobes and automatic lights which are sure to impress. Further benefits of the apartment include a Crestron audio visual system, a digital video door entry system and pre-wiring for Sky + TV.

With its riverside location, Palace Wharf is also conveniently close to a number of transport links including Hammersmith Overground and Underground Station, Barons Court, Putney Bridge and Fulham Broadway Underground Stations, along with several regular and varied bus services which further improve accessibility.



Directions







Floor Plan



These particulars, whilst believed to be accurate are set out as a general outline only for guidance and do not constitute any part of an offer or contract. Intending purchasers should not rely on them as statements of representation of fact, but must satisfy themselves by inspection or otherwise as to their accuracy. No person in this firms employment has the authority to make or give any representation or warranty in respect of the property.

