

OUTLET

RESIDENTIAL



Portman Gate

108 Lisson Grove London NW1 6LR

- Available 7th May
- Raised ground floor
- Secure gated development
- Landscaped communal gardens
- Marylebone station nearby
- Furnished
- 24 hour portorage
- Leisure centre
- Private terrace
- Close to Regent's Park

£484 Per Week

Portman Gate

108 Lisson Grove London NW1 6LR

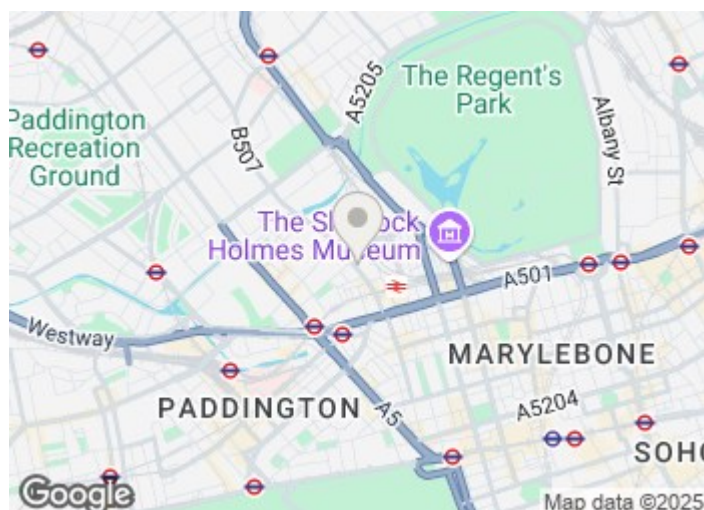


Available from the 7th of May on a furnished basis is this purpose built raised ground floor flat in Marylebone with 24 hour portage and excellent leisure facilities including an indoor swimming pool for the use of its residents.

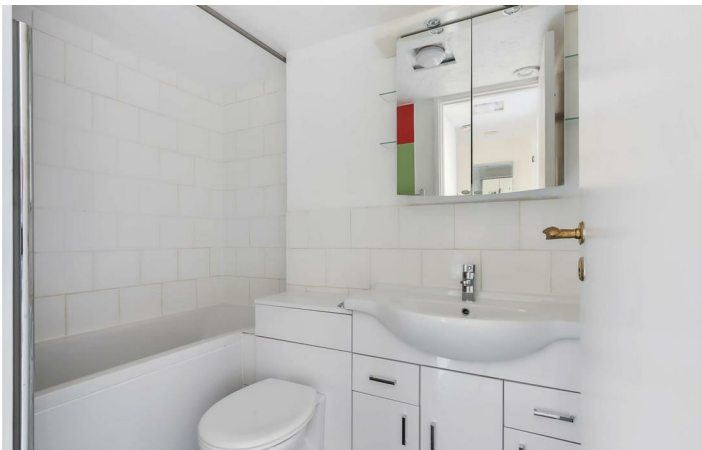
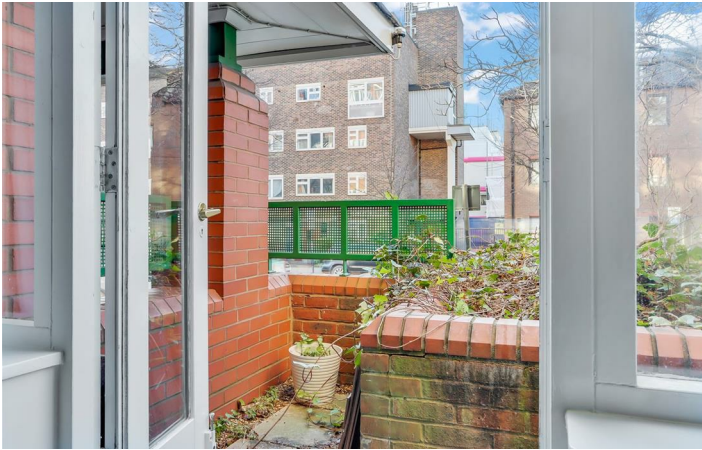
The freshly decorated property forms part of a secure, gated and extremely conscientiously managed development and briefly comprises an entrance hall with storage cupboards, front facing reception with doors opening onto a small outdoor terrace which is open plan to a fitted kitchen with integrated appliances including a dishwasher, one double bedroom overlooking the landscaped communal grounds and a bathroom.

Portman Gate fronts Lisson Grove and is within a short walk of Marylebone (Chiltern Railways) overground and Marylebone (Bakerloo line) underground stations providing fast services in and out of central London.

A good selection of shops including a Tesco Express are also within walking distance as are many popular bars and well regarded restaurants whilst open space can be enjoyed in glorious Regent's Park.

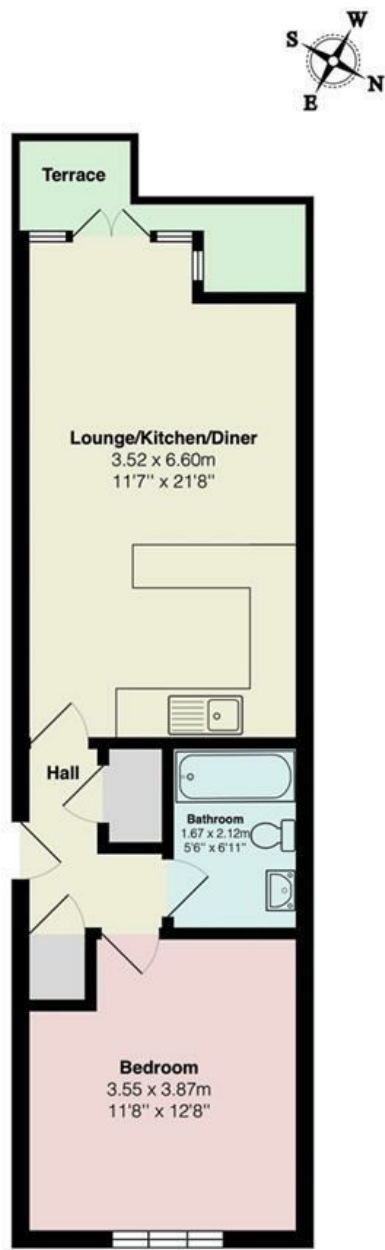


Directions





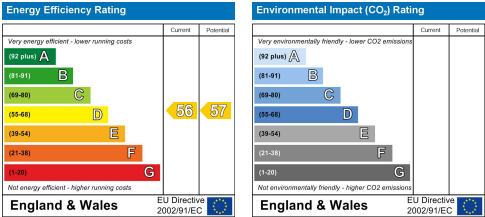
Floor Plan



Total Area: 46.3 m² ... 498 ft² (excluding terrace)

Measurements are approximate and for display purposes only.
© The Property Photography Company Ltd.

These particulars, whilst believed to be accurate are set out as a general outline only for guidance and do not constitute any part of an offer or contract. Intending purchasers should not rely on them as statements of representation of fact, but must satisfy themselves by inspection or otherwise as to their accuracy. No person in this firm's employment has the authority to make or give any representation or warranty in respect of the property.



48 Warwick Street Soho, London, W1B 5NL
Tel: 020 7287 4244 Email: enquiries@outlet.co.uk <https://www.outletresidential.co.uk>