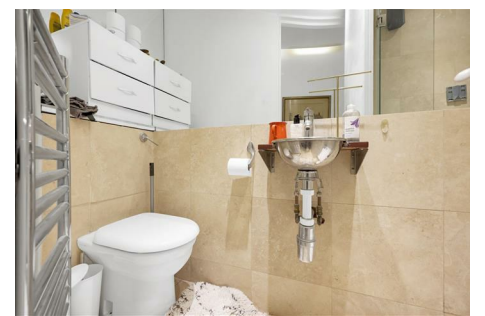


OUTLET RESIDENTIAL



Newport House

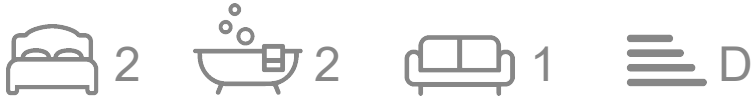
16 Great Newport Street London WC2H 7JE

- Available 10th September
- Second floor
- Heart of Theatreland
- Two bedrooms
- Leicester Square station seconds away
- Furnished
- Very well maintained building
- Wood flooring
- Two bathrooms
- Close to bars and restaurants

£807 Per Week

Newport House

16 Great Newport Street London WC2H 7JE



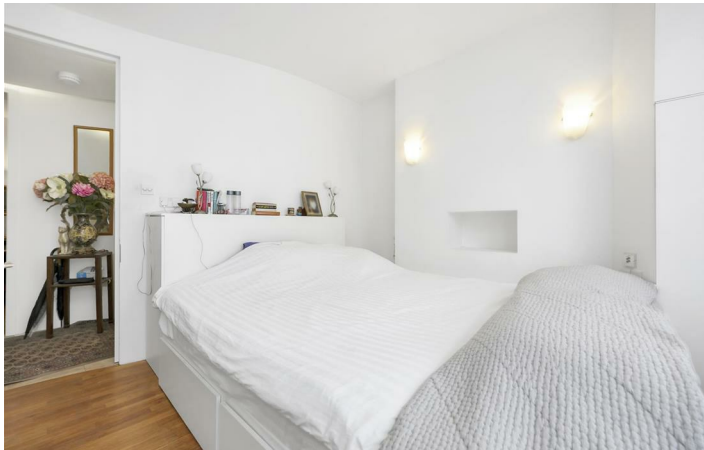
Available from the 10th September on a furnished basis is this well presented second floor flat in the heart of Theatreland.

The 84 sqm property which forms part of an excellently maintained mixed use building has wood flooring throughout and briefly comprises an entrance hall, a street facing reception room that enjoys an abundance of natural light and has ample space for dining which is open plan to a fully fitted kitchen with integrated appliances including a dishwasher, two bedrooms with fitted wardrobes one of which benefits from an ensuite bathroom and a second bathroom with laundry facilities off the hallway.

Leicester Square (Northern line) and Covent Garden (Piccadilly) stations are both within comfortable walking distance as are many bars and highly rated restaurants.



[Directions](#)





Floor Plan

These particulars, whilst believed to be accurate are set out as a general outline only for guidance and do not constitute any part of an offer or contract. Intending purchasers should not rely on them as statements of representation of fact, but must satisfy themselves by inspection or otherwise as to their accuracy. No person in this firm's employment has the authority to make or give any representation or warranty in respect of the property.

