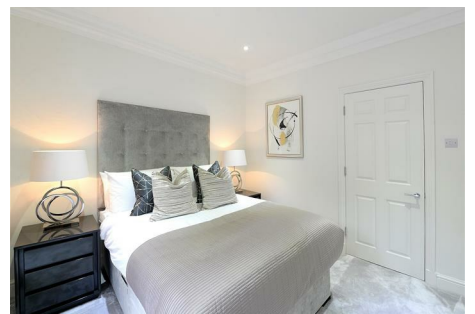
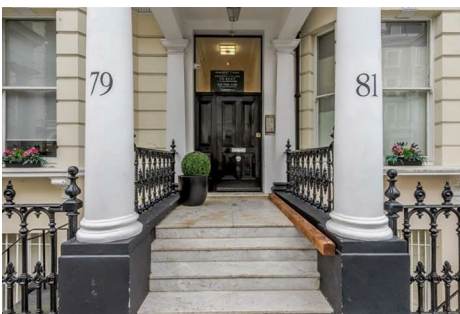
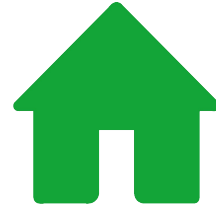


OUTLET

RESIDENTIAL



Somerset Court

79-81 Lexham Gardens Kensington W8 6JN

- Available immediately
- Newly redecorated
- Luxury furniture
- Integrated appliances
- High Ceilings and period features.
- Furnished/unfurnished
- An impressive 40ft garden to the rear
- Ground and upper ground floor
- Flexible rental terms
- Several fantastic bars and restaurants within a five-minute walk.

£2,050 Per Week

Somerset Court

79-81 Lexham Gardens Kensington W8 6JN



Available immediately.

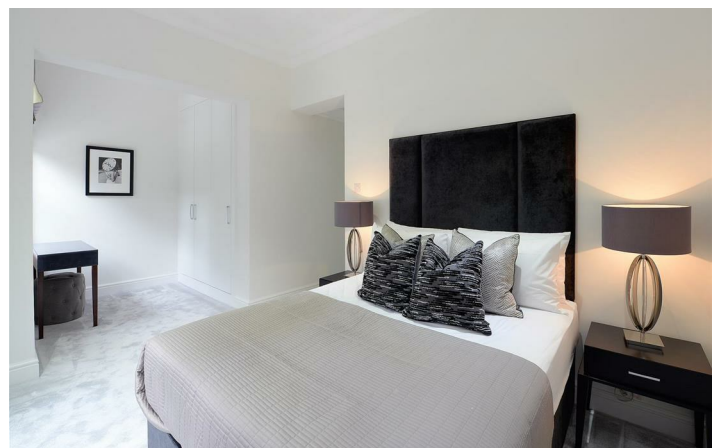
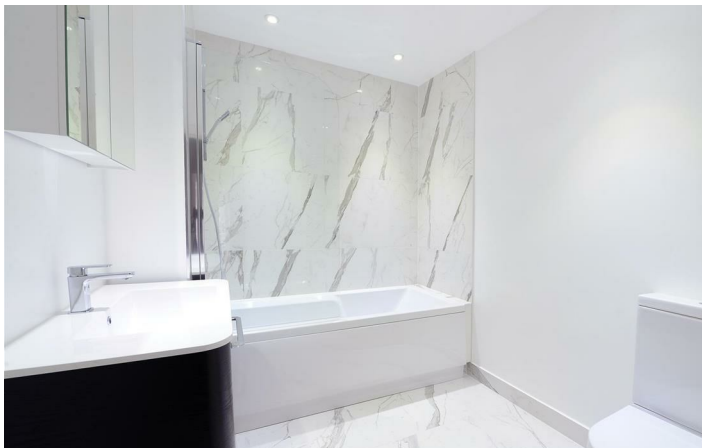
This large, three double duplex bedroom ground and raised ground floor apartment are located perfectly on one of the best roads in Kensington. The apartment has been fully refurbished to the highest quality with the living space featuring several classic period features as well as traditional high ceilings all blended seamlessly with modern comforts such as engineered wood flooring and up-to-date appliances throughout.

The apartment also benefits from direct access to an impressive 40ft garden to the rear, highly sought after and rare in this prime location.

The property is located in Kensington and therefore benefits from the many amenities of Kensington High Street as well as several fantastic bars and restaurants within a five-minute walk.



[Directions](#)





Floor Plan

These particulars, whilst believed to be accurate are set out as a general outline only for guidance and do not constitute any part of an offer or contract. Intending purchasers should not rely on them as statements of representation of fact, but must satisfy themselves by inspection or otherwise as to their accuracy. No person in this firm's employment has the authority to make or give any representation or warranty in respect of the property.

