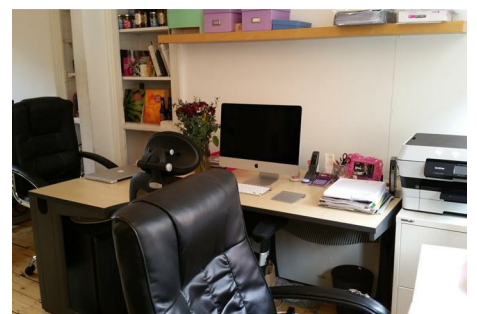
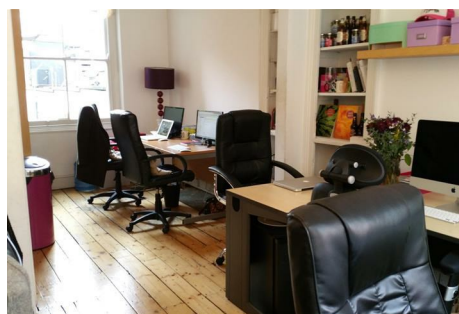


# OUTLET

## RESIDENTIAL



### 14-16 Brewer Street Soho London W1F 0SQ

- Available 29th July
- Rent includes business rates, service charge and utilities
- Private cloakroom
- 24 hour access
- Oxford Street and Regent Street within walking distance
- Light and airy 2nd floor office space
- Capacity for six work stations
- Newly decorated
- Unfurnished
- Piccadilly Circus station two minutes away

**£1,850 Per Month**

## 14-16 Brewer Street

Soho London W1F 0SQ



Available from the 29th of July on an unfurnished basis is this self-contained second floor office space with 24 hour access in the heart of vibrant Soho.

Thought ideal for a small start-up company the light and airy office benefits from newly fitted carpets and a private cloakroom.

Fully inclusive of business rates, service charge and utilities the newly decorated office is currently fully open plan and has the capacity for six work stations all with access to a shared connectivity network.

Brewer Street runs between Glasshouse Street to the west and Wardour Street to the east just a short distance from Piccadilly Circus (Bakerloo and Piccadilly lines) station.

Soho's multitude of bars, restaurants and cafes are moments away whilst pleasant open space can be enjoyed in nearby St Anne's Gardens, a Soho hidden gem.



Directions





# Floor Plan

These particulars, whilst believed to be accurate are set out as a general outline only for guidance and do not constitute any part of an offer or contract. Intending purchasers should not rely on them as statements of representation of fact, but must satisfy themselves by inspection or otherwise as to their accuracy. No person in this firm's employment has the authority to make or give any representation or warranty in respect of the property.

