



The Old School, 10 Elsee Road, Rugby, Warwickshire, CV21 3BA

HOWKINS &  
HARRISON



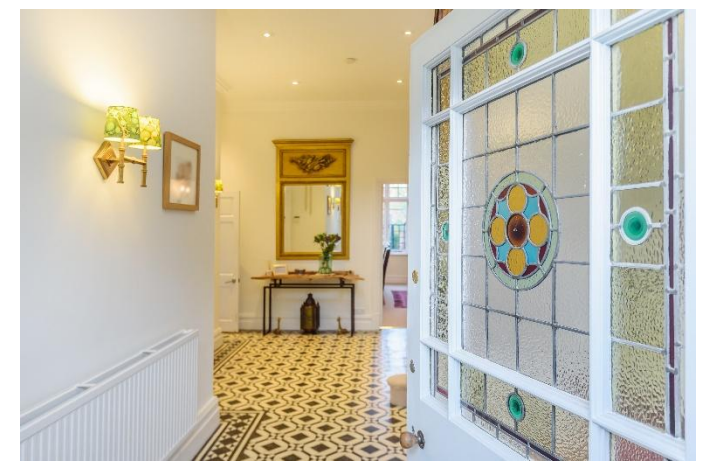
# The Old School, 10 Elsee Road, Rugby, Warwickshire, CV21 3BA

Guide Price: £900,000

A fine example of a six bedroom Edwardian Town House within walking distance of Rugby School, Rugby Town Centre and Rugby Rail station. Located in sought after Elsee Road and formerly the Old School this extensive property has high quality fixtures and fittings. Beautifully presented throughout, there is over 4,200 square feet of accommodation and the property benefits from off road parking, two car park permits and a double garage with electric roller door. Updated to a high standard the property retains its Edwardian elegance with period features including high ceilings, large windows, fireplaces and cornices, whilst offering a fabulous contemporary kitchen.

## Features

- Accommodation over three floors with wine cellar
- Spacious, well-proportioned rooms
- Extended kitchen with glass side extension and glass roof lantern
- Period features & Balcony to second floor
- Newly restored and double glazed original sash windows to the front
- Reception hall
- Drawing room, family room, dining room and spacious first floor study
- Five en-suite bathrooms, family bathroom and en-suite shower room
- Attractive walled garden with summer house
- Off road parking and double garage with electric roller door



## Location

The property is located on Elsee Road, one of the most sought-after locations within the Rugby Conservation Area on a quiet no-through road, hidden away in the centre of town. Within walking distance of the property are all the shops and amenities the town has to offer, including high street and independent retail outlets, a good selection of pubs, bars and restaurants, and sports and leisure facilities. Further shopping can be found at the out of town retail parks, Junction One and Elliott's Field. Lawrence Sheriff, a grammar school for boys, and the world renowned Rugby School are both within a two minute walk of the property, while Rugby High School for Girls, Bilton Grange Prep School and a good range of state and independent schools for all ages are available just a short drive or bus journey away. The property is also well positioned for the commuter with easy access to the motorway network (M1, M45, and M6) and excellent rail links, with Rugby station being only a 12 minute walk away, which offers a regular high speed service to London Euston in under 50 minutes.

## Outside

To the front of the property there is a block paved drive, which provides parking in front of the electric roller door, integral double garage. A side gate leads to the rear of the property and the attractive walled garden with paved areas edged with cobble stones divided by trellis and pergolas. A summer house is located to one side of the garden and mirror panels extend the look of the garden.



## Ground Floor

An elegant front door provides access to a porch, beyond which is a further door, with stained glass leading to the impressive reception hall, featuring coving to the ceiling and Amtico laser cut tiled floor, based on the original Minton design. Stairs with original wooden banisters rise to the first floor. The family room features large windows overlooking the rear garden, along with coving to the ceiling and a ceiling rose. The focal point to the room is a contemporary feature fireplace with gas fire inset and granite hearth. Located to the front of the property, the traditional drawing room is particularly spacious with a beautiful bay window and an impressive marble fireplace, with marble hearth, limestone surround and gas fire inset, along with period features including coving, feature panelled walls, dado rail and ceiling rose. The dining room overlooks the rear and also features coving to the ceiling and a ceiling rose. Extended to the side elevation, with a glass roof, affording lots of natural light, is the kitchen/breakfast room which offers a contemporary twist to the Edwardian style, fitted with a range of high gloss wall and base units with quartz worktops over and complementing porcelain tiles. There is a large island unit providing additional storage options and a seating area with impressive roof lantern over. There are French doors to the rear garden and a floor hatch providing access to the cellar. Integrated appliances include a Britannia range style cooker, dishwasher, Bosch double oven and combination microwave grill. The integral garage is accessed from the side extension of the kitchen, with further doors leading to the front and rear of the property. Both the kitchen and side extension benefit from Dynalite computerised lighting system with 5 zones, dimmable for mood, with a selection of colours for LEDs in the side extension. The ground floor is completed with the cloakroom which is fitted to a high standard with attractive Saharan Sandstone imported from Spain.











## First Floor

A spacious galleried landing with window over has stairs rising to the second floor and provides access to three generously proportioned bedrooms, with individually designed en-suite bathrooms along with a study, family bathroom and useful first floor utility room. The principal suite is located to the rear elevation, benefitting from dual aspect windows, boasting views over the garden, and an en-suite bathroom with contemporary tiling to the water sensitive areas, bath with glass shower screen and rainforest shower over, low flush WC, a grey high gloss vanity unit with wash hand basin inset and complementary tiling to the floor. Overlooking the front aspect, bedrooms two and three are light and spacious. Bedroom three features wall lined fitted wardrobes to one wall, with a fully tiled en-suite fitted with a contemporary chrome and glass shower enclosure, complementing wall hung wash hand basin mounted over a glass and chrome shelf and WC. The study overlooks the rear aspect and is fitted with attractive office furniture, which includes a large unit with glass display shelves with plinth over and inset lighting, fitted bookshelves and cupboards and a large desk. Dual aspect windows overlook the rear garden and afford lots of natural light. The utility room is ideally placed on the first floor fitted with numerous white high gloss cupboards and drawers, with mosaic tiling to the splash back areas. Double doors lead to an airing cupboard and there is space and plumbing for appliances.

## Second Floor

The glass panelled landing has a large window over which creates lots of natural light to this particularly spacious area. Doors provide access to three double bedrooms, one with a shower room and two with en-suites which feature contemporary tiling imported from Spain, and a sitting room with kitchen. Overlooking the rear aspect there is an open plan area divided into a sitting room and kitchen. The seating area, with a multipaned window and velux window above, opens out to the kitchen which has been fitted with vinyl flooring and a range of light beech wall and base units including glass display cupboards, pan and cutlery drawers with work tops over. Integral appliances include an oven and an electric hob, drinks fridge, dishwasher and a small fridge. Double doors with glazed panels either side open out to a Juliet balcony overlooking the rear garden.









## Viewing

Strictly by prior appointment via the selling agents Howkins and Harrison. Contact 01788 564666.

## Fixtures and Fittings

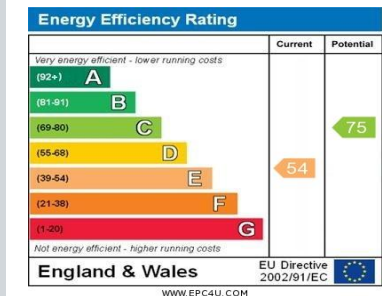
Only those items in the nature of fixtures and fittings mentioned in these particulars are included in the sale. Other items are specifically excluded. None of the appliances have been tested by the agents and they are not certified or warranted in any way.

## Services

None of the services have been tested and purchasers should note that it is their specific responsibility to make their own enquiries of the appropriate authorities as to the location, adequacy and availability of mains water, electricity, gas and drainage services.

## Local Authority

Rugby Borough Council. Tel: 01788 533533.  
Council Tax Band – G.



## Elsee Road, Rugby, CV21

Approximate Area = 4446 sq ft / 413 sq m (excludes void)

Garage = 288 sq ft / 26.7 sq m

Total = 4734 sq ft / 439.8 sq m

For identification only - Not to scale



Floor plan produced in accordance with RICS Property Measurement 2nd Edition, Incorporating International Property Measurement Standards (IPMS2 Residential). © nichecom 2025. Produced for Howkins & Harrison. REF: 915260

## Howkins & Harrison

7-11 Albert Street, Rugby, Warwickshire CV21 2RX

Telephone 01788 564666  
Email [property@howkinsandharrison.co.uk](mailto:property@howkinsandharrison.co.uk)  
Web [howkinsandharrison.co.uk](http://howkinsandharrison.co.uk)  
Facebook HowkinsandHarrison  
Twitter HowkinsLLP  
Instagram HowkinsLLP



rightmove  
find your happy



This document is made from fully recyclable materials.  
We are working on ways to move all of our products to recyclable solutions.