



7 Juniper Court, Berrydale, Northampton, NN3 5HN

HOWKINS &
HARRISON

7 Juniper Court, Berrydale, Northampton, NN3 5HN

Guide Price £370,000

A well-presented and generously proportioned detached bungalow, occupying a prominent position within a quiet cul-de-sac. The property benefits from extensive wrap-around gardens, ample off-road parking for multiple vehicles, and a double garage. The location is particularly convenient, with local amenities and the Weston Favell Shopping Centre close by.

Features

- Detached bungalow
- Three good sized bedrooms
- Spacious sitting room
- Separate dining room
- Fitted kitchen
- Family bathroom
- En-suite to master
- Driveway and double garage
- Ample “wrap-around” gardens



Location

Berrydale is a sought-after residential area within Northampton, offering a peaceful, family-friendly setting with a mix of spacious detached homes, modern bungalows, and well-maintained gardens. Conveniently located for Northampton town centre, excellent schools, shopping at Weston Favell and Riverside Retail Park, and strong transport links via the A4500 and M1.

Outside

To the front, a driveway provides parking for multiple vehicles and leads to a double two-door garage. A paved path leads to the front door, with a small lawn to one side. Gated side access leads to the rear garden. The rear garden is well-established and spacious, with a paved patio seating area, water feature, raised steps, and a pathway following the garden boundary, all bordered by mature plants and trees. The garden wraps around the property to a lawned area, wooden summer shed, and additional paved path leading to side access and the garage. Enclosed by fencing and hedging, the garden offers a versatile outdoor space.



Accommodation

The property is accessed via a uPVC front door into an entrance hall, which includes a handy sliding-door storage cupboard and an additional airing cupboard. The hall provides access to all principal rooms. The spacious sitting room benefits from plenty of natural light and features a brick feature wall with an inset gas fire. It leads through to the separate dining room, which has sliding patio doors opening onto the garden.

The fitted kitchen includes a range of base and wall units with work surfaces incorporating a stainless-steel sink. Appliances include a gas hob with extractor, integrated oven and grill, and there is space and plumbing for a washing machine, tumble dryer, and fridge/freezer. There are three good-sized bedrooms, all with built-in wardrobes, and the master bedroom includes an en-suite shower room. The family bathroom is fitted with a walk-in shower, WC, and wash hand basin.

Viewing Arrangements

Strictly by prior appointment via the agents Howkins & Harrison. Tel:01604-823456.

Fixtures and Fittings

Only those items in the nature of fixtures and fittings mentioned in these particulars are included in the sale. Other items are specifically excluded. None of the appliances have been tested by the agents and they are not certified or warranted in any way.

Services

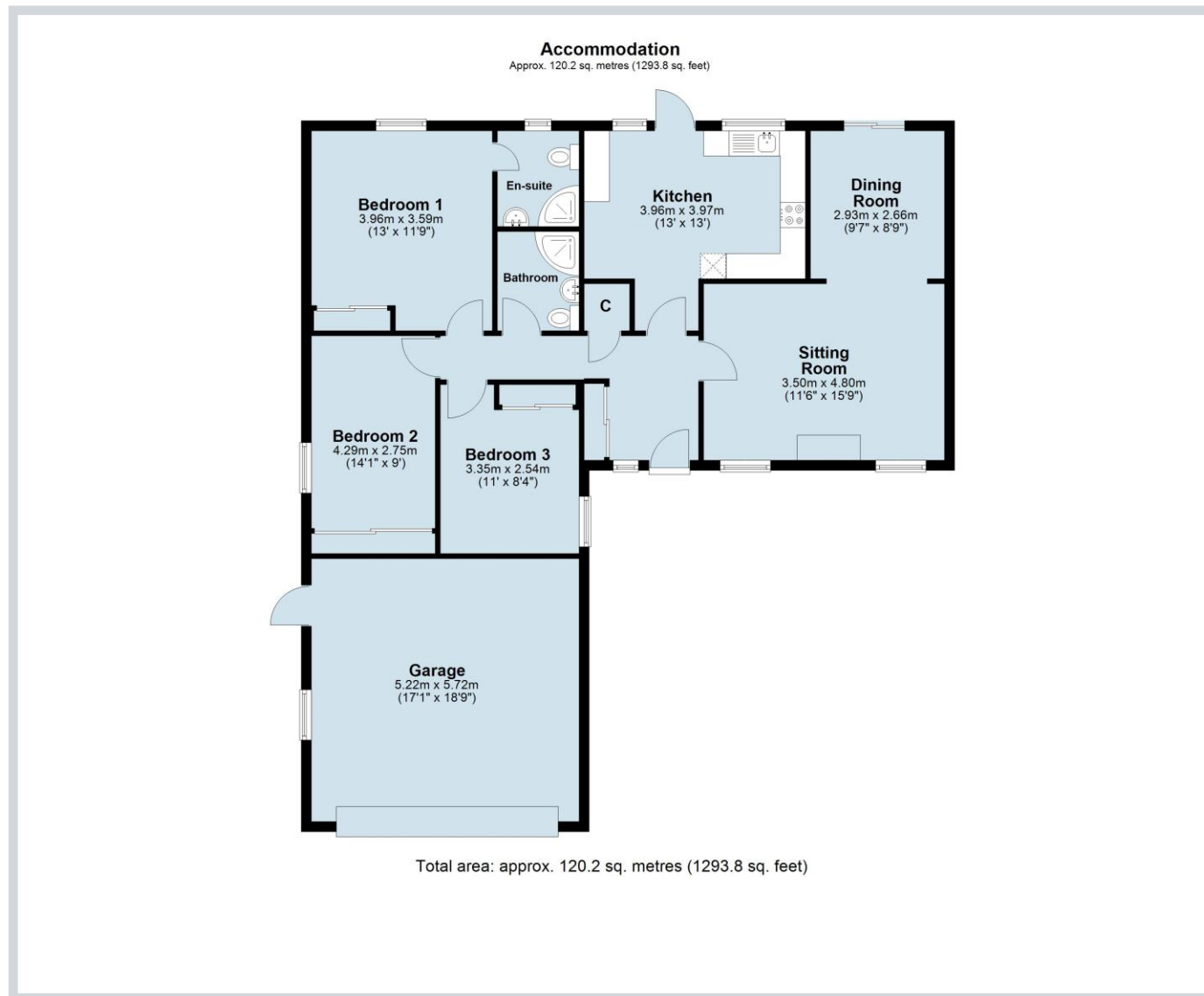
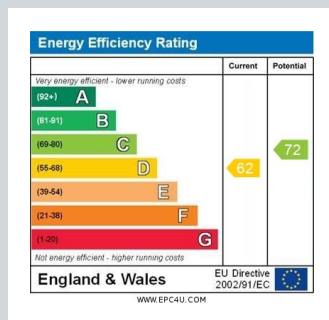
None of the services have been tested and purchasers should note that it is their specific responsibility to make their own enquiries of the appropriate authorities as to the location, adequacy and availability of mains water, electricity, gas and drainage services.

Local Authority

West Northamptonshire Council.

Tel:0300-1267000.

Council Tax Band- E



Howkins & Harrison

14 Bridge Street, Northampton, NN1 1NW

Telephone 01604 823456
Email property@howkinsandharrison.co.uk
Web howkinsandharrison.co.uk
Facebook HowkinsandHarrison
Twitter HowkinsLLP
Instagram HowkinsLLP

Every care has been taken with the preparation of these Sales Particulars, but complete accuracy cannot be guaranteed. In all cases, buyers should verify matters for themselves. Where property alterations have been undertaken buyers should check that relevant permissions have been obtained. If there is any point, which is of particular importance let us know and we will verify it for you. These Particulars do not constitute a contract or part of a contract. All measurements are approximate. The Fixtures, Fittings, Services & Appliances have not been tested and therefore no guarantee can be given that they are in working order. Photographs are provided for general information and it cannot be inferred that any item shown is included in the sale. Plans are provided for general guidance and are not to scale.



rightmove
find your happy



This document is made from fully recyclable materials.
We are working on ways to move all of our products to recyclable solutions.