

SW19

it's all in the postcode...



Woodside

£600,000

- Two double bedrooms
- Period conversion flat
- Off Street Parking
- No Onward chain
- Well presented throughout



020 8544 2828

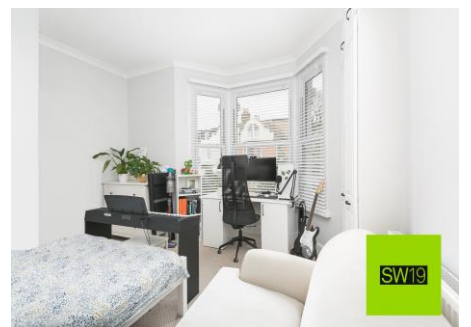
Wimbledon: Wimbledon Park: Colliers Wood

www.SW19.com

SW19 Estate Agents Ltd. Is registered in England & Wales No. 05508737

'it's all in the postcode...'

Stunning Two-Bedroom Victorian Conversion Flat in Prime Wimbledon Location This exceptional two-bedroom, first-floor Victorian conversion flat offers the perfect blend of classic charm and modern living. Ideally situated near Wimbledon Town Centre and the picturesque Wimbledon Village, it benefits from a variety of excellent transport links. The spacious lounge/diner provides an inviting space for relaxation and entertaining, while the property also offers the added convenience of off-street parking. Boasting a share of freehold and being offered with the benefit of no onward chain, this flat is an attractive option for buyers seeking a hassle free move. Tastefully presented throughout, the property exudes a modern, contemporary style, making it an ideal home in a sought after location.



020 8544 2828

Wimbledon: Wimbledon Park: Colliers Wood

www.SW19.com

SW19 Estate Agents Ltd. Is registered in England & Wales No. 05508737

'it's all in the postcode...'

Woodside

Approximate Gross Internal Area

704 sq ft / 65.40 sq m

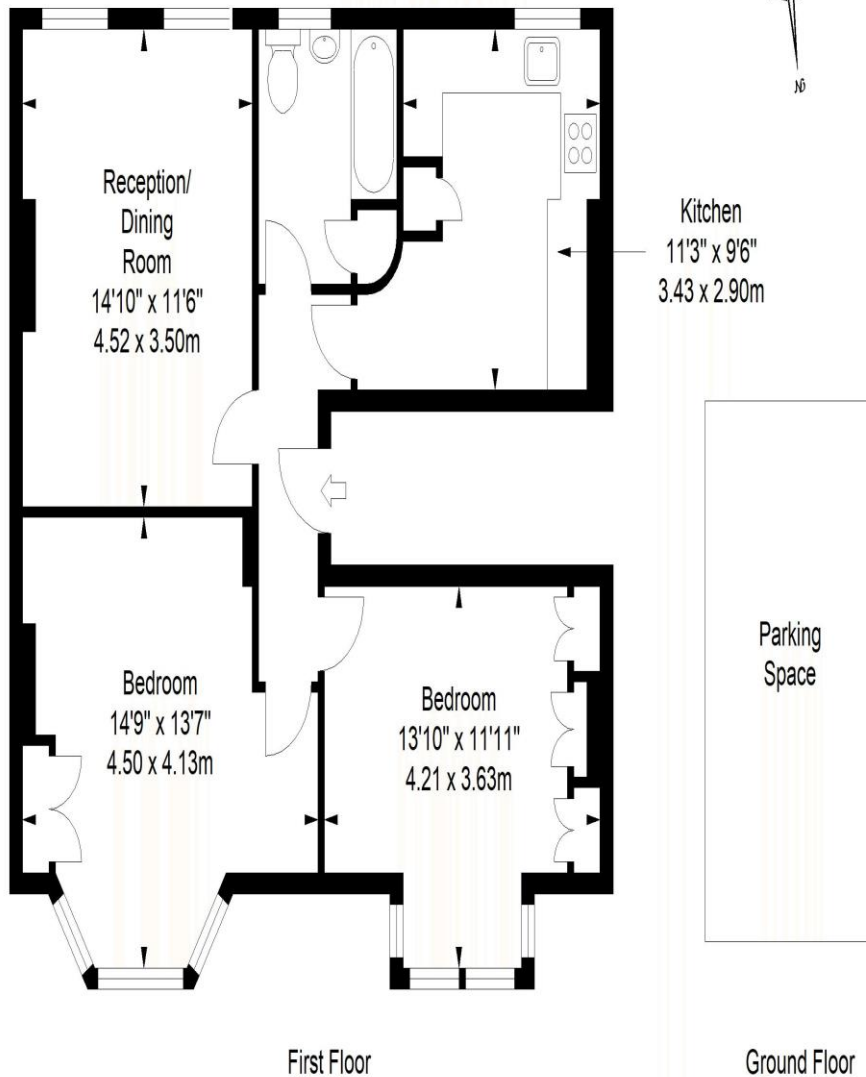


ILLUSTRATION FOR IDENTIFICATION PURPOSES ONLY

ALL MEASUREMENTS ARE MAXIMUM, AND INCLUDE WINDOW BAYS AND WARDROBES WHERE APPLICABLE
THIS PLAN MUST NOT BE REPRODUCED BY ANY OTHER PERSON WITHOUT PERMISSION

SW19

020 8544 2828

Wimbledon: Wimbledon Park: Colliers Wood

www.SW19.com

SW19 Estate Agents Ltd. Is registered in England & Wales No. 05508737

'it's all in the postcode...'

These particulars are for guidance only and should not be relied upon as a statement or representation of fact. All measurements given are approximate only and should not be relied upon for ordering carpets, equipment etc. Purchasers should satisfy themselves by inspection or otherwise as to the accuracy of the statements contained within. Neither SW19 estate agents Ltd or related companies or their employees can confirm structural conditions of the property or that any appliances or other facilities are in working order. Purchasers are strongly recommended to arrange their own survey.

020 8544 2828

Wimbledon: Wimbledon Park: Colliers Wood

www.SW19.com

SW19 Estate Agents Ltd. Is registered in England & Wales No. 05508737

'it's all in the postcode...'