

SW19

it's all in the postcode...



Boundary Road

Colliers Wood

Monthly Rental Of £2,750

- Three double bedrooms & study/nursery
- Two reception rooms
- Two bathrooms
- Garden
- Unfurnished



Wimbledon 119 Merton Road London SW19 1ED

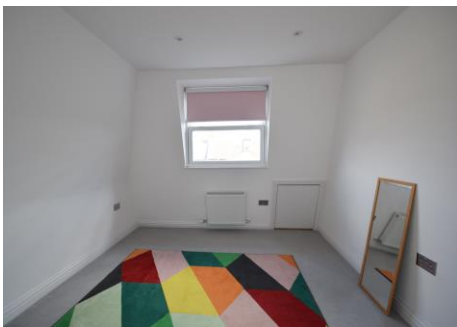
Colliers Wood 44 High Street London SW19 2AB

020 8544 2828

www.SW19.com

SW19 Estate Agents Ltd. Is registered in England & Wales No. 05508737

We are pleased to offer this impressive three double bedroom, study/nursery, two reception room, two bathroom, split level maisonette with own private rear-garden accessed directly from the kitchen via internal staircase. This property has been tastefully modernised throughout and offers a modern kitchen, bathroom, and shower room. Suitable for a professional couple or for a family. Available from 1st August and offered unfurnished.



SW19**Boundary Road, SW19**CAPTURE DATE
09/10/2019LASER SCAN POINTS
36,114,604**GROSS INTERNAL AREA**
107.1 Sqm / 1153.2 Sqft **GROSS INTERNAL AREA**
The footprint of the property
107.1 Sqm / 1153.2 Sqft **NET AREA (INTERNAL)**
Excludes walls and external features
96.4 Sqm / 1037.8 Sqft **EXTERNAL STRUCTURAL FEATURES**
Balconies, terraces, verandas etc.
0.0 Sqm / 0.0 Sqft **RESTRICTED HEAD HEIGHT**
Limited use area under 1.5m
12.0 Sqm / 128.7 Sqft

Spec floor plans are produced in accordance with the Royal Institution of Chartered Surveyors' Property Measurement Standards. Plots and gardens are illustrative only and are excluded from all area calculations. Due to rounding, numbers may not add up precisely. All measurements shown for the individual room lengths and widths are the maximum points of measurements captured in the scan.

IPMS 3B RESIDENTIAL
101.9 Sqm / 1096.5 SqftIPMS 3C RESIDENTIAL
96.8 Sqm / 1041.8 SqftSPEC ID
5d9767da9ef92909f6a9ea27

These particulars are for guidance only and should not be relied upon as a statement or representation of fact. All measurements given are approximate only and should not be relied upon for ordering carpets, equipment etc. Purchasers should satisfy themselves by inspection or otherwise as to the accuracy of the statements contained within. Neither SW19 estate agents Ltd or related companies or their employees can confirm structural conditions of the property or that any appliances or other facilities are in working order. Purchasers are strongly recommended to arrange their own survey.

Wimbledon 119 Merton Road London SW19 1ED**Colliers Wood 44 High Street London SW19 2AB**

020 8544 2828

www.SW19.com

SW19 Estate Agents Ltd. Is registered in England & Wales No. 05508737