

**SW19**

*it's all in the postcode...*

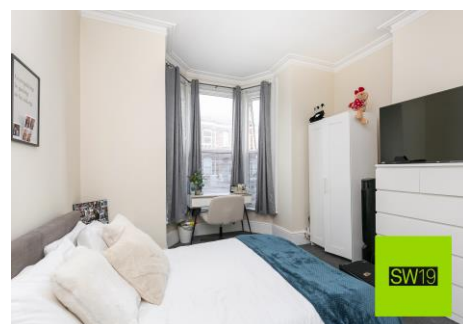


**SW19**

**Alexandra Road**

**£1,150,000**

- Semi detached family home
- Wimbledon Central
- No onward chain
- Off Street parking
- Three/Four bedrooms



020 8544 2828

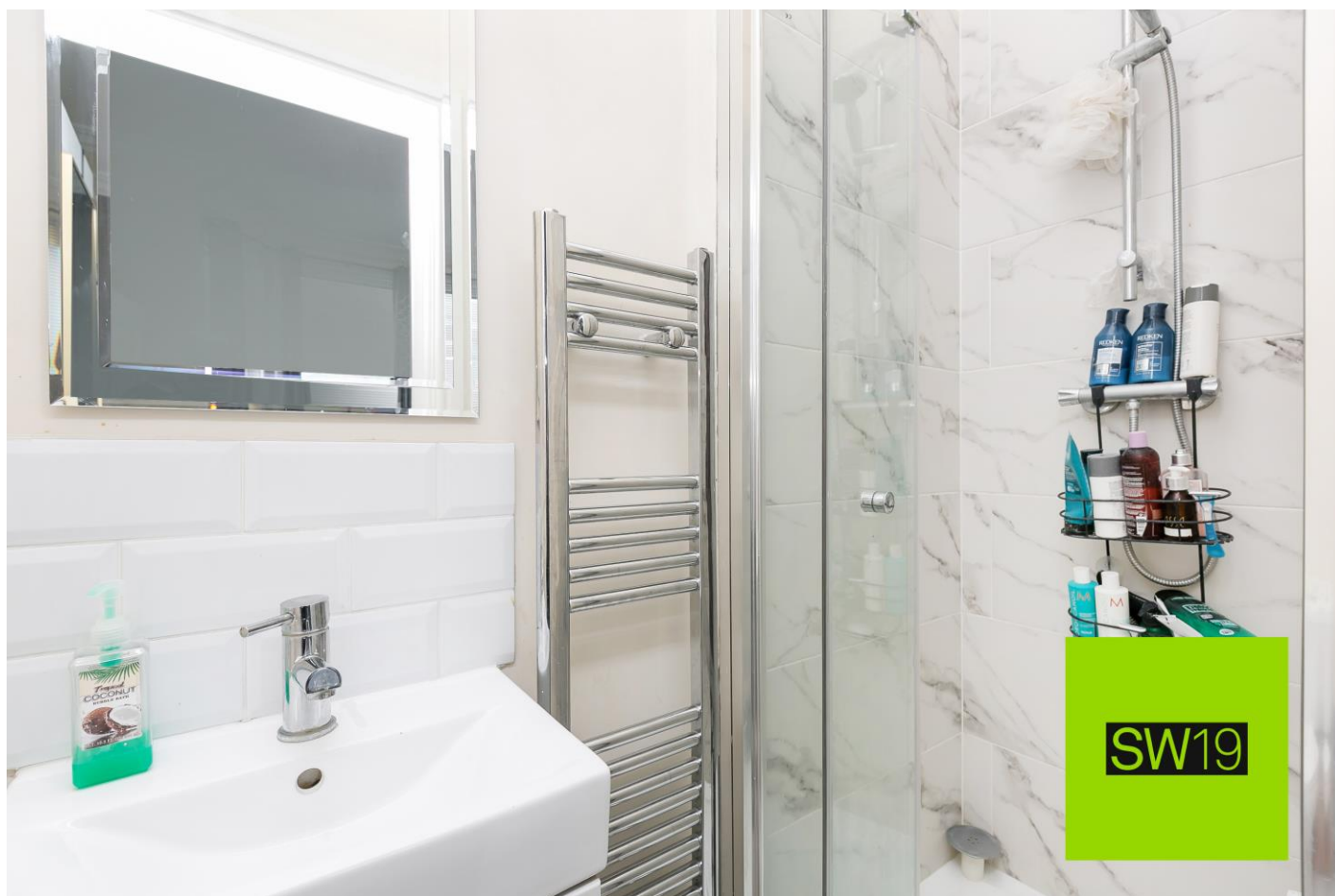
Wimbledon: Wimbledon Park: Colliers Wood

[www.SW19.com](http://www.SW19.com)

SW19 Estate Agents Ltd. Is registered in England & Wales No. 05508737

*'it's all in the postcode...'*

A charming and spacious three/four bedroom four bathroom semi-detached period home, located in the heart of Wimbledon, just moments from the town centre and excellent transport links. Beautifully extended on the ground floor, this delightful home features a bright and airy kitchen/breakfast room with direct access to a private rear garden—perfect for entertaining or relaxing. The property also benefits from off-street parking to the front and is offered with no onward chain, providing a smooth and hassle-free purchase opportunity.



020 8544 2828

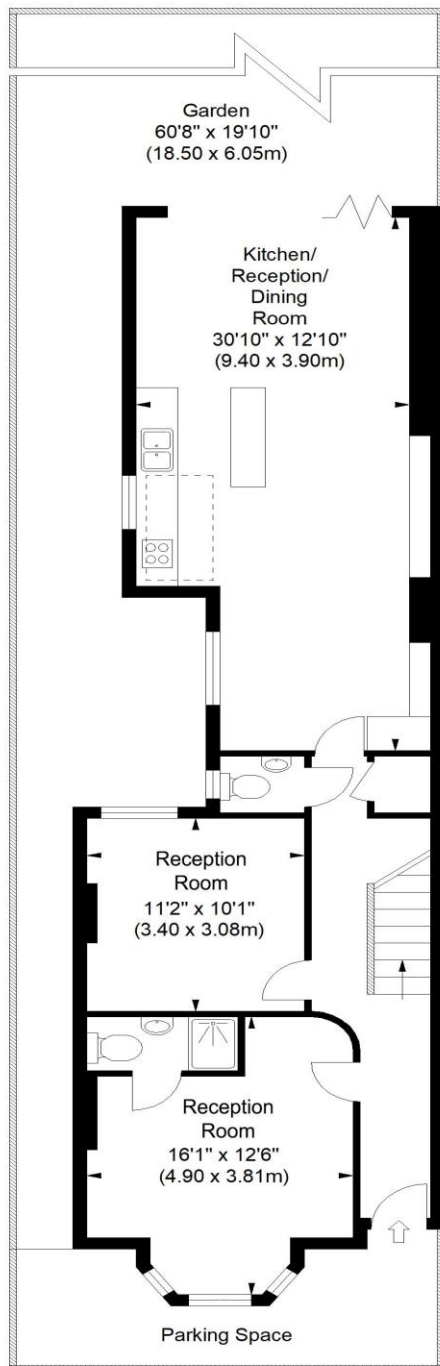
Wimbledon: Wimbledon Park: Colliers Wood

[www.SW19.com](http://www.SW19.com)

SW19 Estate Agents Ltd. Is registered in England & Wales No. 05508737

*'it's all in the postcode...'*





Ground Floor

## Alexandra Road

Approximate Gross Internal Area  
1436 sq ft / 133.42 sq m



First Floor

SW19

ILLUSTRATION FOR IDENTIFICATION PURPOSES ONLY

ALL MEASUREMENTS ARE MAXIMUM, AND INCLUDE WINDOW BAYS AND WARDROBES WHERE APPLICABLE  
THIS PLAN MUST NOT BE REPRODUCED BY ANY OTHER PERSON WITHOUT PERMISSION

These particulars are for guidance only and should not be relied upon as a statement or representation of fact. All measurements given are approximate only and should not be relied upon for ordering carpets, equipment etc. Purchasers should satisfy themselves by inspection or otherwise as to the accuracy of the

020 8544 2828

Wimbledon: Wimbledon Park: Colliers Wood

[www.SW19.com](http://www.SW19.com)

SW19 Estate Agents Ltd. Is registered in England & Wales No. 05508737

*'it's all in the postcode...'*

statements contained within. Neither SW19 estate agents ltd or related companies or their employees can confirm structural conditions of the property or that any appliances or other facilities are in working order. Purchasers are strongly recommended to arrange their own survey.

---

020 8544 2828

Wimbledon: Wimbledon Park: Colliers Wood

[www.SW19.com](http://www.SW19.com)

SW19 Estate Agents Ltd. Is registered in England & Wales No. 05508737

*'it's all in the postcode...'*