

SW19

it's all in the postcode...

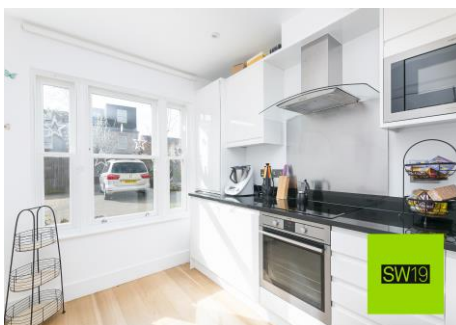


SW19

Barton Mews

Monthly Rental Of £4,000

- Gated setting in the heart of Wimbledon
- Four double bedrooms
- Bright living room with downstairs WC
- Easy-care garden and private parking
- Ready end of April, Unfurnished



020 8544 2828

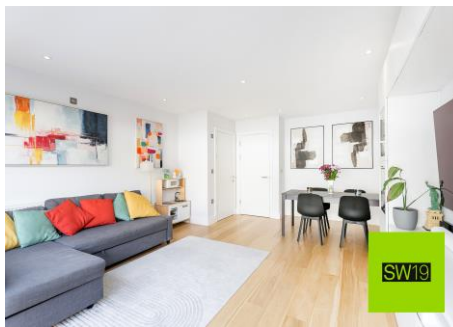
Wimbledon: Wimbledon Park: Colliers Wood

www.SW19.com

SW19 Estate Agents Ltd. Is registered in England & Wales No. 05508737

'it's all in the postcode...'

SW19 Estate Agents are delighted to present this impressive four-bedroom townhouse, ideally situated within a secure, gated development in the heart of Wimbledon. Beautifully designed for modern family living, this spacious home offers a flexible layout across multiple floors, featuring four generous double bedrooms, a stylish family bathroom, and an en-suite shower room to the principal bedroom. The ground floor welcomes you with a bright and spacious reception room, a contemporary fitted kitchen, and a convenient downstairs WC. To the rear, you'll find a low-maintenance private garden – perfect for relaxing or entertaining. Further benefits include private off-street parking within the gated grounds and a peaceful yet central location, close to Wimbledon's excellent schools, transport links, and local amenities. Available from the end of April, Offered Unfurnished.



020 8544 2828

Wimbledon: Wimbledon Park: Colliers Wood

www.SW19.com

SW19 Estate Agents Ltd. Is registered in England & Wales No. 05508737

'it's all in the postcode...'

Barton Mews, SW19

Approximate Gross Internal Area
1226 sq ft / 113.93 sq m

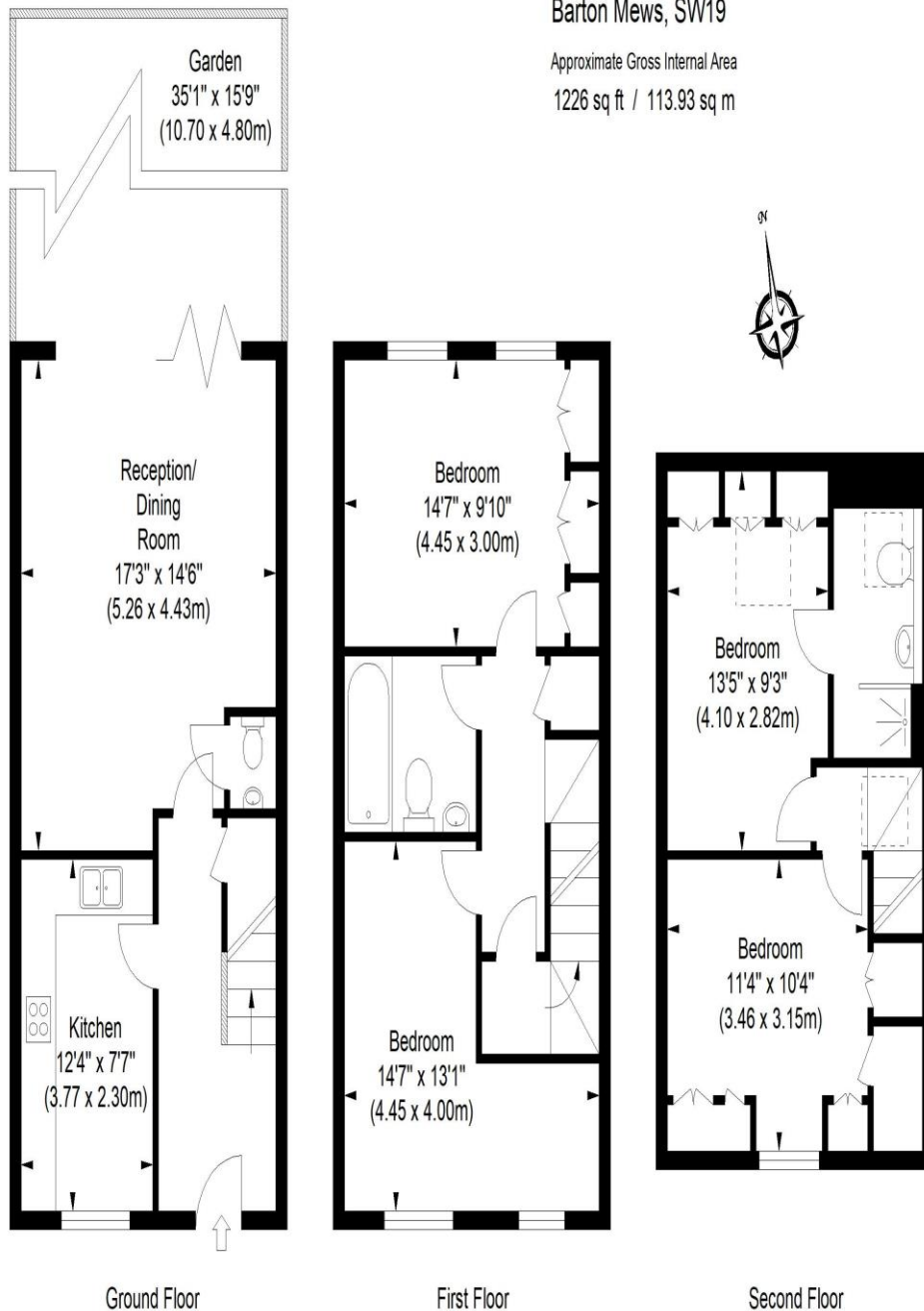


ILLUSTRATION FOR IDENTIFICATION PURPOSES ONLY

ALL MEASUREMENTS ARE MAXIMUM, AND INCLUDE WINDOW BAYS AND WARDROBES WHERE APPLICABLE
THIS PLAN MUST NOT BE REPRODUCED BY ANY OTHER PERSON WITHOUT PERMISSION

SW19

020 8544 2828

Wimbledon: Wimbledon Park: Colliers Wood

www.SW19.com

SW19 Estate Agents Ltd. is registered in England & Wales No. 05508737

'it's all in the postcode...'

These particulars are for guidance only and should not be relied upon as a statement or representation of fact. All measurements given are approximate only and should not be relied upon for ordering carpets, equipment etc. Purchasers should satisfy themselves by inspection or otherwise as to the accuracy of the statements contained within. Neither SW19 estate agents Ltd or related companies or their employees can confirm structural conditions of the property or that any appliances or other facilities are in working order. Purchasers are strongly recommended to arrange their own survey.

020 8544 2828

Wimbledon: Wimbledon Park: Colliers Wood

www.SW19.com

SW19 Estate Agents Ltd. Is registered in England & Wales No. 05508737

'it's all in the postcode...'