

SW19

it's all in the postcode...



Haydons Road

£400,000

- Two bedrooms
- Prime Location
- Share of Freehold
- Outside space
- Perfect for First-Time Buyers



020 8544 2828

Wimbledon: Wimbledon Park: Colliers Wood

www.SW19.com

SW19 Estate Agents Ltd. Is registered in England & Wales No. 05508737

'it's all in the postcode...'

SW19 Estate Agents are delighted to present this beautifully appointed two double-bedroom first-floor flat, ideally situated just moments from Wimbledon town centre. Boasting an enviable location, this property offers superb transport links with Haydons Road station a mere 7-minute stroll away, ensuring effortless commutes and connectivity. Wimbledon station and town centre are also easily accessible, being just a 15-20 minute walk from the property. Perfect for first-time buyers, this charming flat is offered with no onward chain, providing a seamless and stress-free purchase process. The property features spacious living areas, including a generously sized living room that offers ample space for relaxation and entertainment. The two double bedrooms provide comfort and flexibility. Residents will also enjoy access to a well-maintained communal garden, perfect for relaxing and socialising. Additionally, the property includes parking facilities, adding to the convenience of this fantastic home. Don't miss this exceptional opportunity to own a beautiful flat in one of Wimbledon's most sought-after locations. Contact SW19 Estate Agents today to arrange a viewing.



020 8544 2828

Wimbledon: Wimbledon Park: Colliers Wood

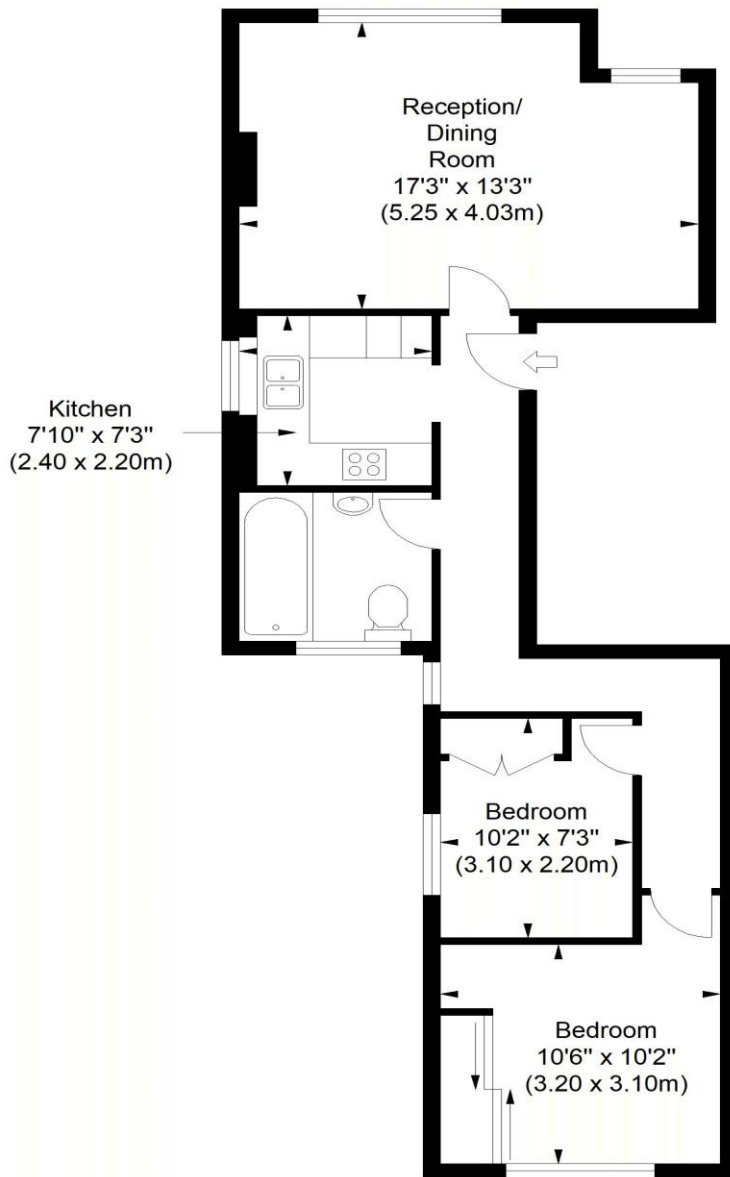
www.SW19.com

SW19 Estate Agents Ltd. Is registered in England & Wales No. 05508737

'it's all in the postcode...'

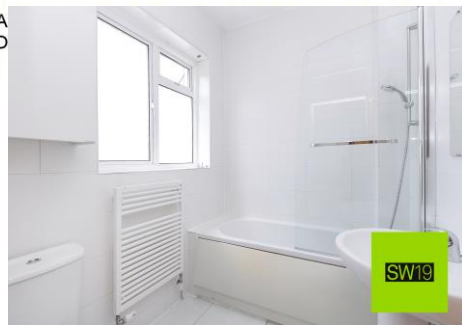
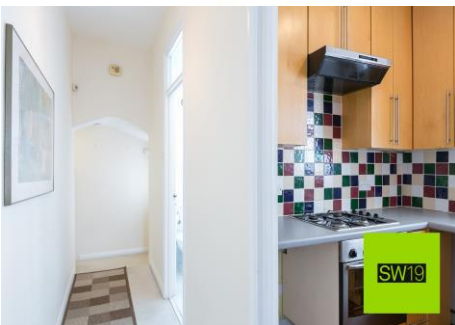
Haydons Road

Approximate Gross Internal Area
627 sq ft / 58.26 sq m



First Floor

ILLUSTRATION FOR IDENTIFICATION PURPOSES ONLY



020 8544 2828

Wimbledon: Wimbledon Park: Colliers Wood

www.SW19.com

SW19 Estate Agents Ltd. Is registered in England & Wales No. 05508737

'it's all in the postcode...'

These particulars are for guidance only and should not be relied upon as a statement or representation of fact. All measurements given are approximate only and should not be relied upon for ordering carpets, equipment etc. Purchasers should satisfy themselves by inspection or otherwise as to the accuracy of the statements contained within. Neither SW19 estate agents ltd or related companies or their employees can confirm structural conditions of the property or that any appliances or other facilities are in working order. Purchasers are strongly recommended to arrange their own survey.

020 8544 2828

Wimbledon: Wimbledon Park: Colliers Wood

www.SW19.com

SW19 Estate Agents Ltd. Is registered in England & Wales No. 05508737

'it's all in the postcode...'