



41 Ell-Dene Crescent, Gateshead, NE10 9UN

Offers Over £165,000

Nestled in the charming Bog House Estate on Ell-Dene Crescent, this stunning three-bedroom semi-detached home offers a delightful blend of modern living and traditional charm. The property has been thoughtfully extended and opened up from its original structure, creating a unique and inviting space. Upon entering, you are welcomed into a spacious lounge featuring an exposed brick chimney and a cosy log burner, perfect for those chilly evenings. This generous room is not only ideal for relaxation but also provides ample space for a dining table, making it perfect for entertaining family and friends. Flowing seamlessly from the lounge, you will find a stylish shaker-style kitchen, complete with a Belfast sink that adds a touch of country elegance. The kitchen is bathed in natural light and offers lovely views of the garden, as well as direct access to the outdoor space, making it a wonderful spot for culinary adventures. On the first floor, the property boasts three well-proportioned bedrooms, each offering a comfortable retreat. The family bathroom is a true highlight, featuring a luxurious slipper bath that invites you to unwind after a long day. Externally, the home is complemented by a delightful rear garden, adorned with mature fruit trees, a lush lawn, and a patio area, perfect for alfresco dining or simply enjoying the outdoors. To the front, the property benefits from off-street parking for one vehicle, adding to the convenience of this lovely home. This semi-detached gem is not just a house; it is a place where memories can be made. With its charming features and inviting atmosphere, it is sure to appeal to those seeking a warm and welcoming family home. Can be sold with vacant possession.

ENTRANCE LOBBY

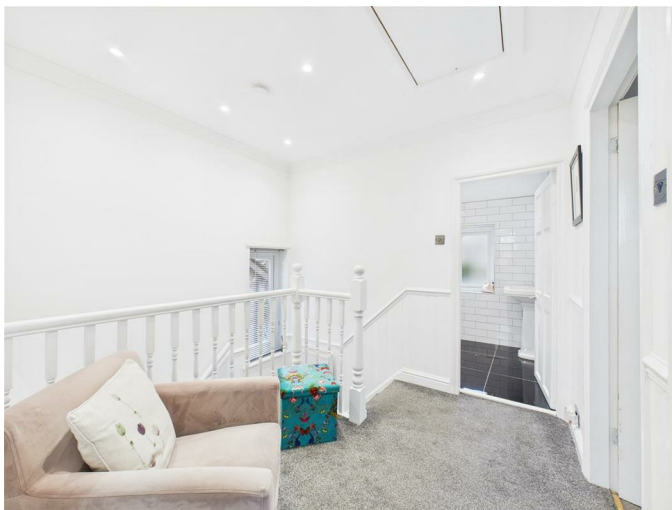
OPEN PLAN LOUNGE/DINING ROOM



EXTENDED KITCHEN



ACCOMMODATION FIRST FLOOR



BEDROOM ONE



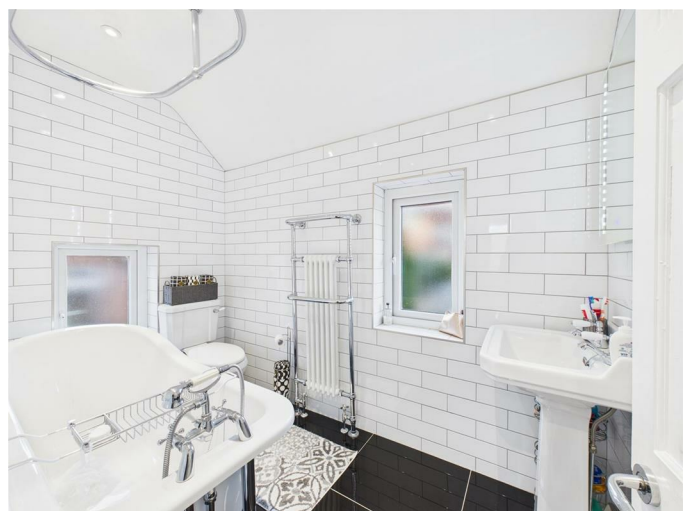
BEDROOM TWO



BEDROOM THREE



FAMILY BATHROOM / W.C



EXTERNAL

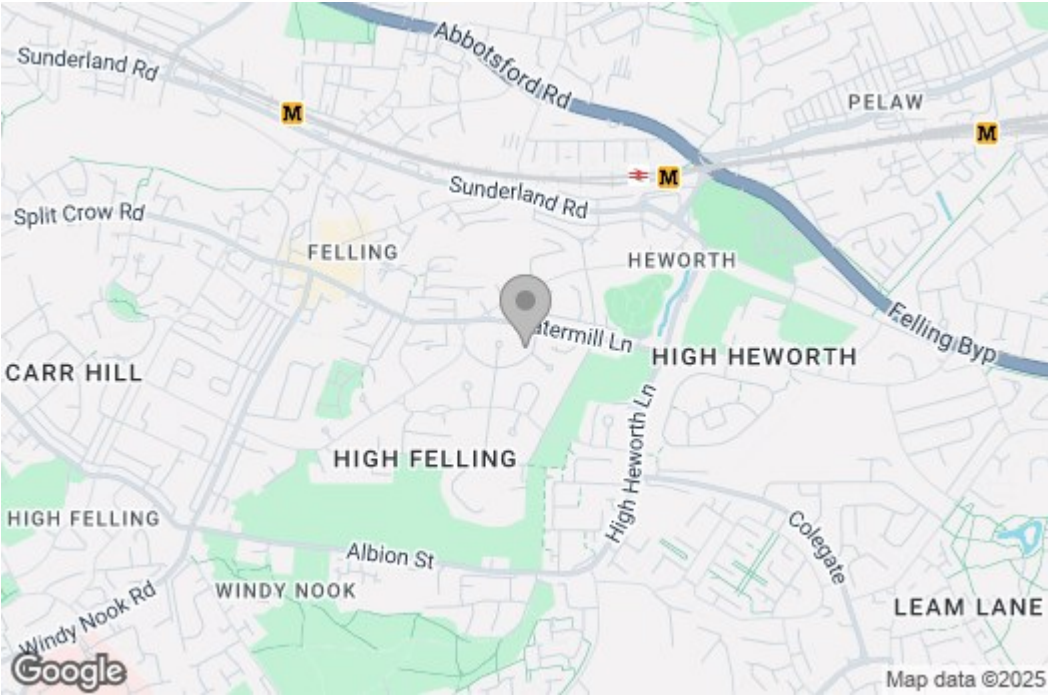


Property disclaimer

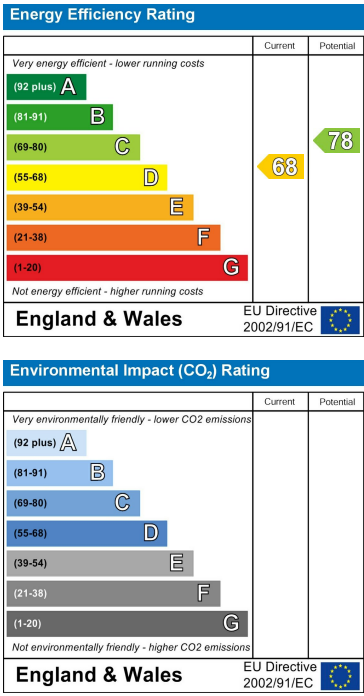
IMPORTANT NOTE TO PURCHASERS: We endeavour to make our sales particulars accurate and reliable, however, they do not constitute or form part of an offer or any contract and none is to be relied upon as statements of representation or fact. The services, systems and appliances listed in this specification have not been tested by us and no guarantee as to their operating ability or efficiency is given. All measurements have been taken as a guide to prospective buyers only, and are not precise. Floor plans where included are not to scale and accuracy is not guaranteed. If you require clarification or further information on any points, please contact us, especially if you are travelling some distance to view. Fixtures and fittings other than those mentioned are to be agreed with the seller. We cannot also confirm at this stage of marketing the tenure of this house.

Floor Plan

Area Map



Energy Efficiency Graph



These particulars, whilst believed to be accurate are set out as a general outline only for guidance and do not constitute any part of an offer or contract, purchaser should not rely on them as statements of representation of fact, but must satisfy themselves by inspection or otherwise as to their accuracy. No person in this firm's employment has the authority to make or give an representation or warranty in respect of the property.