



39 Whinbrooke, Gateshead, NE10 8HR

£140,000

Located in the sought-after area of Whinbrooke, this well-presented semi-detached house offers a delightful blend of comfort and style. The property boasts spacious accommodation throughout, making it an ideal family home. Upon entering, you are welcomed by a charming entrance hallway that leads to a generous living and dining room. This inviting space features a lovely fire surround and a bay window, allowing natural light to flood in, creating a warm and welcoming atmosphere. The kitchen, with its pleasant outlook over the rear garden, is perfect for culinary enthusiasts and family gatherings alike. Upstairs, the first-floor landing provides access to a partially boarded loft, offering additional storage space for your convenience. The main bedroom is equipped with built-in wardrobes, providing ample storage, while two further bedrooms ensure plenty of room for family or guests. The bathroom is well-appointed, catering to all your needs. Outside, the property is complemented by gardens to the front, side, and rear, providing a wonderful outdoor space for relaxation and play. This semi-detached house is not just a property; it is a home that invites you to create lasting memories. Viewings are essential to truly appreciate the charm and potential of this lovely residence. Don't miss the opportunity to make this delightful house your new home.

ENTRANCE HALLWAY



LIVING/DINING ROOM

24'10" x 11'8" red to 7'10" (7.58m x 3.57m red to 2.41m)



KITCHEN

9'10" x 9'1" (3.01m x 2.79m)



FIRST FLOOR LANDING



BEDROOM ONE

11'7" x 8'3" measured to wardrobes (3.55m x 2.53m measured to wardrobes)



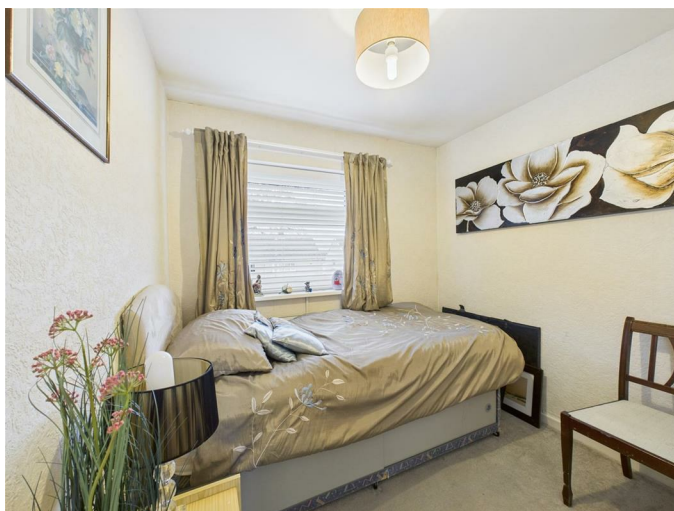
BEDROOM TWO

10'11" x 10'6" (3.34m x 3.21m)



BEDROOM THREE

8'8" x 7'8" (2.65m x 2.36m)



BATHROOM

8'0" x 5'6" (2.45m x 1.69m)



EXTERNAL

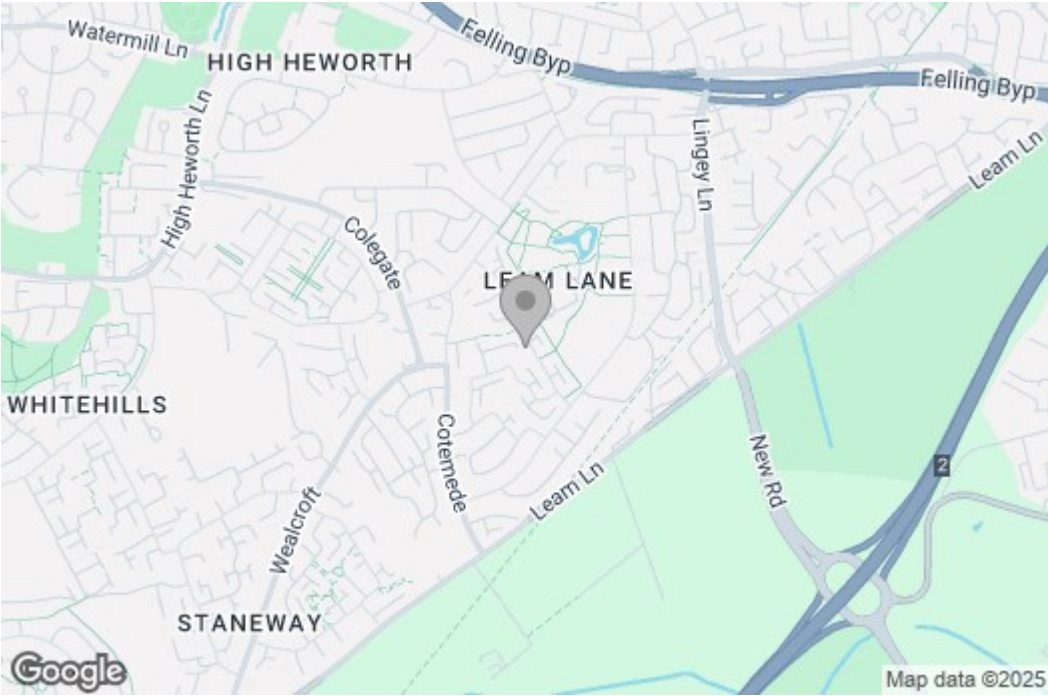


Property disclaimer

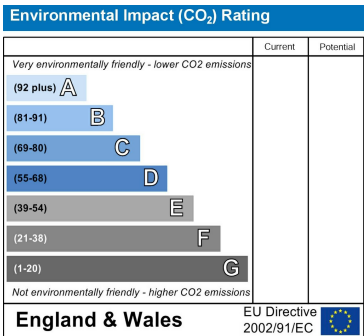
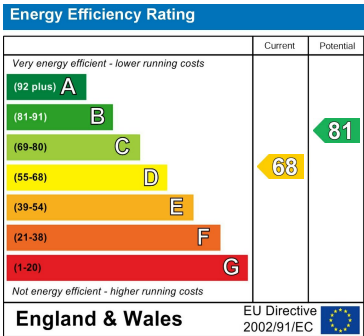
IMPORTANT NOTE TO PURCHASERS: We endeavour to make our sales particulars accurate and reliable, however, they do not constitute or form part of an offer or any contract and none is to be relied upon as statements of representation or fact. The services, systems and appliances listed in this specification have not been tested by us and no guarantee as to their operating ability or efficiency is given. All measurements have been taken as a guide to prospective buyers only, and are not precise. Floor plans where included are not to scale and accuracy is not guaranteed. If you require clarification or further information on any points, please contact us, especially if you are travelling some distance to view. Fixtures and fittings other than those mentioned are to be agreed with the seller. We cannot also confirm at this stage of marketing the tenure of this house.

Floor Plan

Area Map



Energy Efficiency Graph



These particulars, whilst believed to be accurate are set out as a general outline only for guidance and do not constitute any part of an offer or contract, purchaser should not rely on them as statements of representation of fact, but must satisfy themselves by inspection or otherwise as to their accuracy. No person in this firm's employment has the authority to make or give an representation or warranty in respect of the property.