



10 Renforth Street, Gateshead, NE11 9BE

£159,950

Welcome to Renforth Street, Gateshead - a charming terraced house that is sure to capture your heart! This lovely property boasts a prime location, offering convenience to local amenities and excellent transport links. As you step inside, you'll be greeted by a spacious entrance hallway leading to a cosy living room, perfect for relaxing with your loved ones. The highlight of the house is the stunning dining kitchen, recently re-fitted by the current vendor. Imagine cooking up a storm with the integrated oven, eye level microwave, and fridge/freezer at your disposal. This freehold property features Amtico flooring on the ground floor, adding a touch of elegance to the space. The utility room provides practicality and leads to the low maintenance rear garden, ideal for enjoying some outdoor time. Upstairs, you'll find the main bedroom with an en-suite shower room for added convenience. Additionally, there are two more good-sized bedrooms and a family bathroom, ensuring ample space for the whole family.

This terraced house on Renforth Street is not just a house, but a great family home waiting for new memories to be made. Don't miss out on the opportunity to make this property your own and experience the comfort and warmth it has to offer.

ENTRANCE HALLWAY

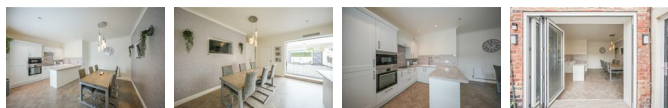
LIVING ROOM

14'1" x 13'10" (4.31m x 4.24m)



DINING KITCHEN

17'11" x 14'6" (5.47m x 4.43m)



UTILITY ROOM

9'5" x 7'6" (2.89m x 2.30m)



FIRST FLOOR LANDING



MAIN BEDROOM

14'9" x 10'7" (4.51m x 3.24m)



EN-SUITE

9'5" x 7'4" (2.89m x 2.26m)



FAMILY BATHROOM

11'6" x 7'8" (3.52m x 2.35m)



BEDROOM TWO

14'10" x 11'2" (4.53m x 3.42m)



BEDROOM THREE

9'8" x 7'10" (2.96m x 2.40m)



EXTERNAL

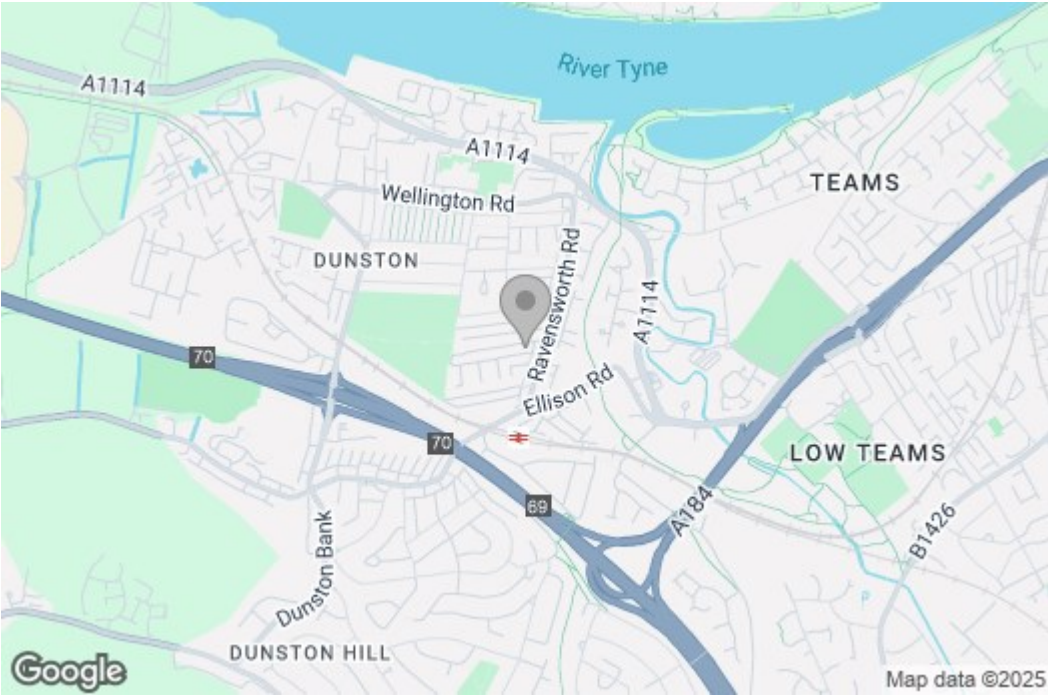


Property disclaimer

IMPORTANT NOTE TO PURCHASERS: We endeavour to make our sales particulars accurate and reliable, however, they do not constitute or form part of an offer or any contract and none is to be relied upon as statements of representation or fact. The services, systems and appliances listed in this specification have not been tested by us and no guarantee as to their operating ability or efficiency is given. All measurements have been taken as a guide to prospective buyers only, and are not precise. Floor plans where included are not to scale and accuracy is not guaranteed. If you require clarification or further information on any points, please contact us, especially if you are travelling some distance to view. Fixtures and fittings other than those mentioned are to be agreed with the seller. We cannot also confirm at this stage of marketing the tenure of this house.

Floor Plan

Area Map



These particulars, whilst believed to be accurate are set out as a general outline only for guidance and do not constitute any part of an offer or contract, purchaser should not rely on them as statements of representation of fact, but must satisfy themselves by inspection or otherwise as to their accuracy. No person in this firm's employment has the authority to make or give an representation or warranty in respect of the property.

Energy Efficiency Graph

