



3 Hopper Road, Gateshead, NE10 9TJ

Offers Over £120,000

Located in the sought-after area of Hopper Road, this well-maintained semi-detached house presents an excellent opportunity for those seeking a comfortable and inviting home. The property boasts a spacious layout, beginning with a welcoming entrance hallway that leads into a charming living room, complete with a feature fireplace that adds a touch of warmth and character. The kitchen is thoughtfully designed, featuring an integrated oven, making it a practical space for culinary enthusiasts. On the first floor, you will find a generous main bedroom equipped with built-in wardrobes, offering not only ample storage but also lovely views that enhance the room's appeal. A second bedroom and a well-appointed bathroom complete the upper level, providing a perfect arrangement for families or guests. Outside, the property is complemented by gardens to the front, a paved side garden, and a delightful rear garden that is decked and features a tranquil garden pond, ideal for relaxation or entertaining. This semi-detached house is a true gem, and viewings are highly recommended to fully appreciate the charm and potential of this ideal home. Whether you are a first-time buyer or looking to downsize, this property offers a wonderful blend of comfort and convenience in a popular location.

ENTRANCE HALLWAY

LIVING ROOM

13'0" x 12'10" (3.98m x 3.92m)



KITCHEN

16'3" x 5'10" (4.97m x 1.80m)



FIRST FLOOR LANDING



BEDROOM ONE

11'10" x 9'6" (3.63m x 2.90m)



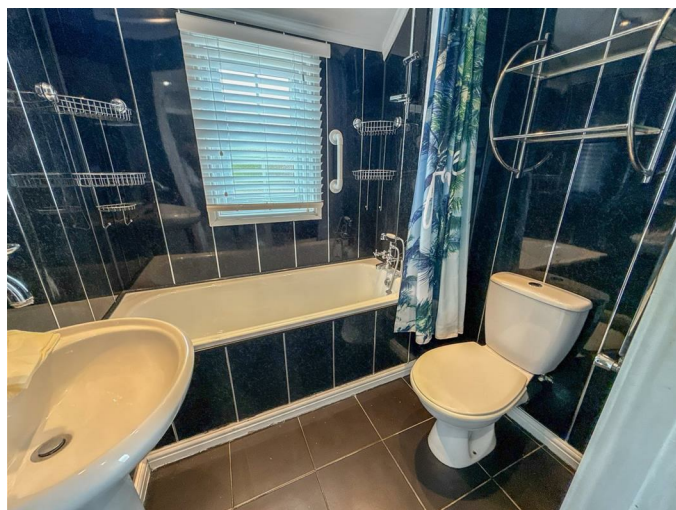
BEDROOM TWO

10'4" x 9'2" (3.16m x 2.81m)



BATHROOM

6'0" x 5'9" (1.84m x 1.77m)



EXTERNAL



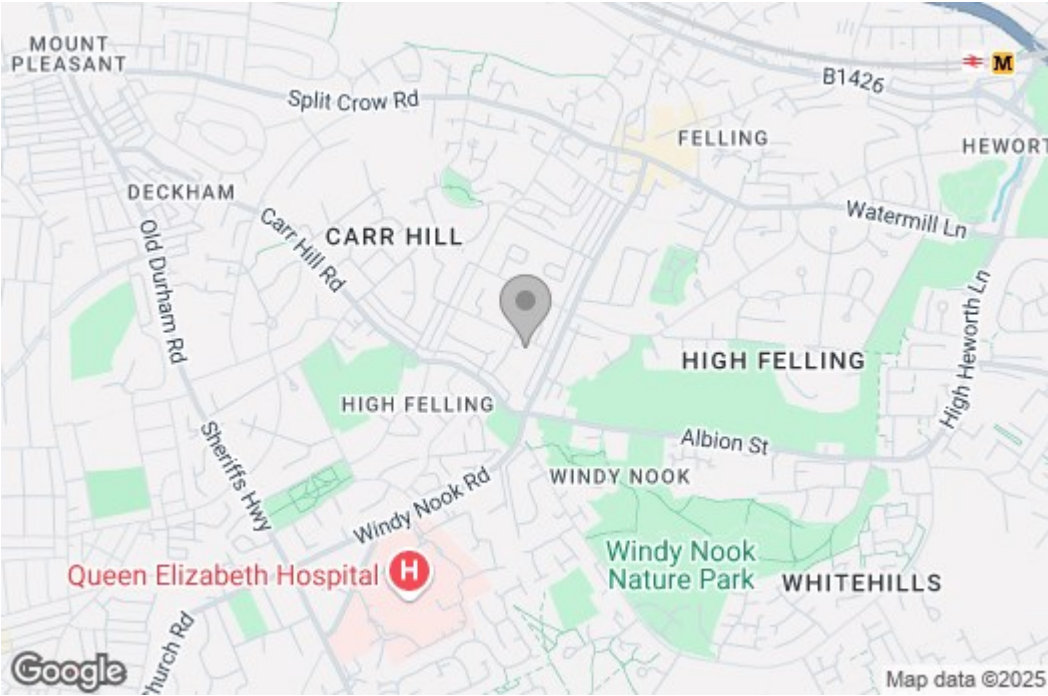
Property disclaimer

IMPORTANT NOTE TO PURCHASERS: We endeavour to make our sales particulars accurate and reliable, however, they do not constitute or form part of an offer or any contract and none is to be relied upon as statements of representation or fact. The services, systems and appliances listed in this specification have not been tested by us and no guarantee as to their operating ability or efficiency is given. All measurements have been taken as a guide to prospective buyers only, and are not precise. Floor

plans where included are not to scale and accuracy is not guaranteed. If you require clarification or further information on any points, please contact us, especially if you are travelling some distance to view. Fixtures and fittings other than those mentioned are to be agreed with the seller. We cannot also confirm at this stage of marketing the tenure of this house.

Floor Plan

Area Map



These particulars, whilst believed to be accurate are set out as a general outline only for guidance and do not constitute any part of an offer or contract, purchaser should not rely on them as statements of representation of fact, but must satisfy themselves by inspection or otherwise as to their accuracy. No person in this firm's employment has the authority to make or give an representation or warranty in respect of the property.

Energy Efficiency Graph

