



Noreeki Wrekenton Row, Gateshead, NE9 7JE

£285,000

Nestled in the charming area of Wrekenton Row, this delightful Detached Bungalow offers a perfect blend of comfort and style. With four/five spacious bedrooms and two inviting reception rooms, this property is ideal for families or those seeking a serene retreat. As you enter, you are greeted by solid wood flooring that flows through the hallway and into the living/dining room, which features an attractive Inglenook and an electric stove-style fire, creating a warm and welcoming atmosphere. French doors lead you into a bright conservatory, perfect for enjoying the lovely views of the garden. The well-appointed breakfasting kitchen boasts a freestanding range-style cooker, along with an integrated fridge/freezer and dishwasher, making it a practical space for culinary enthusiasts. The ground floor also includes two generous double bedrooms, a family bathroom, and a snug that can serve as a guest bedroom or a quiet study. Venturing to the first floor, you will find two additional double bedrooms and a shower room, all of which offer spectacular views that enhance the appeal of this home. The exterior of the property is equally impressive, featuring lovely gardens to the rear, complete with a raised sun terrace and patio, perfect for outdoor entertaining or simply enjoying the sunshine.

Additionally, a stunning Dutch barn equipped with power and lighting provides versatile space for hobbies or storage.

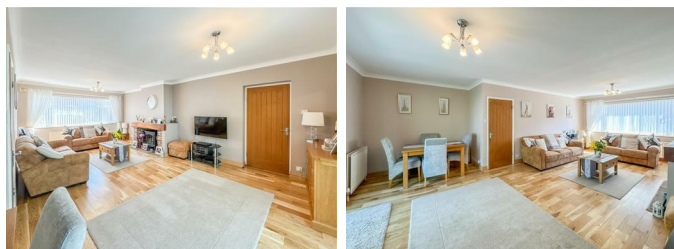
This exceptional bungalow is a true gem, and viewing is essential to fully appreciate the charm and potential it offers. Don't miss the opportunity to make this wonderful home your own.

ENTRANCE HALLWAY



LIVING/DINING ROOM

24'5" x 15'11" into recess (7.45m x 4.87m into recess)



CONSERVATORY

9'11" x 9'3" (3.03m x 2.82m)



BREAKFASTING KITCHEN

16'3" x 10'5" red to 7'8" (4.96m x 3.18m red to 2.35m)



REAR HALLWAY

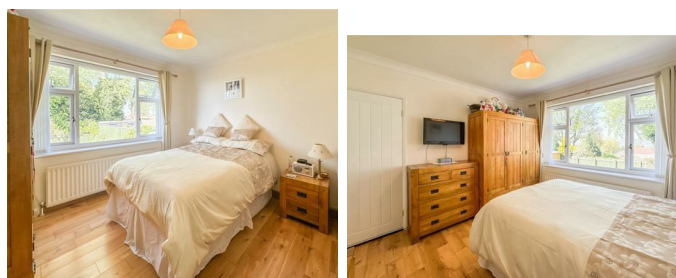


GROUND FLOOR W/C



BEDROOM TWO

12'10" x 10'11" (3.92m x 3.35m)



BEDROOM FOUR

11'3" x 10'11" (3.43m x 3.33m)



BEDROOM ONE

15'2" x 11'4" (4.64m x 3.47m)



SNUG/GUEST BEDROOM

14'8" x 7'9" (4.49m x 2.38m)



BEDROOM THREE

11'8" x 11'3" (3.57m x 3.43m)



FAMILY BATHROOM

9'3" x 7'10" (2.82m x 2.41m)



SHOWER ROOM

8'8" x 5'1" (2.66m x 1.57m)



FIRST FLOOR LANDING



EXTERNAL

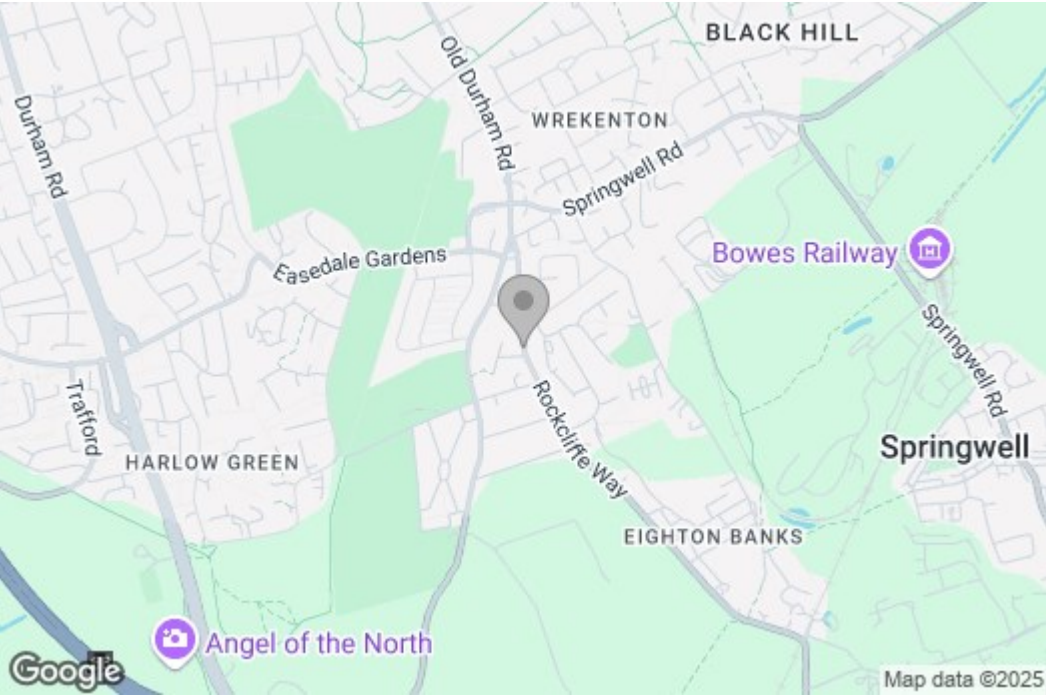


Property disclaimer

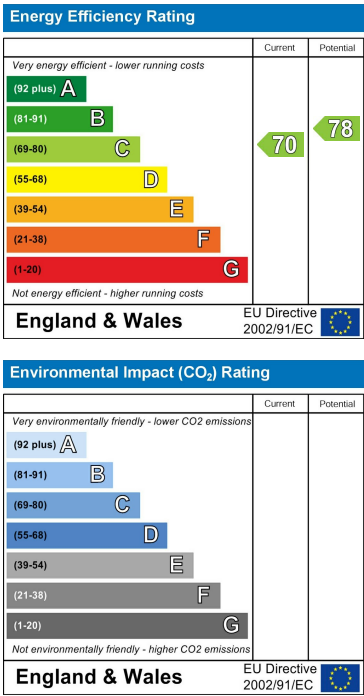
IMPORTANT NOTE TO PURCHASERS: We endeavour to make our sales particulars accurate and reliable, however, they do not constitute or form part of an offer or any contract and none is to be relied upon as statements of representation or fact. The services, systems and appliances listed in this specification have not been tested by us and no guarantee as to their operating ability or efficiency is given. All measurements have been taken as a guide to prospective buyers only, and are not precise. Floor plans where included are not to scale and accuracy is not guaranteed. If you require clarification or further information on any points, please contact us, especially if you are travelling some distance to view. Fixtures and fittings other than those mentioned are to be agreed with the seller. We cannot also confirm at this stage of marketing the tenure of this house.

Floor Plan

Area Map



Energy Efficiency Graph



These particulars, whilst believed to be accurate are set out as a general outline only for guidance and do not constitute any part of an offer or contract, purchaser should not rely on them as statements of representation of fact, but must satisfy themselves by inspection or otherwise as to their accuracy. No person in this firm's employment has the authority to make or give an representation or warranty in respect of the property.