



2 Hadrian Place, Gateshead, NE9 5QD

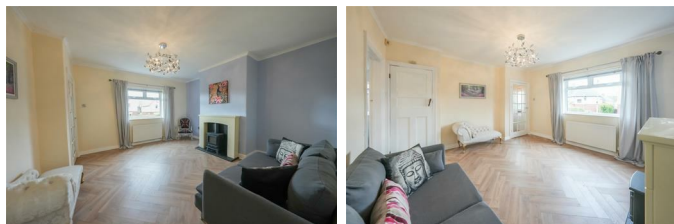
Offers Over £125,000

Welcome to this beautifully refurbished semi-detached home located in the tranquil cul-de-sac of Hadrian Place, Gateshead. This charming property boasts a spacious airy lounge, an impressive kitchen/diner, featuring a stylish shaker-style design complemented by butcher's block worktops. This area offers ample space for dining, making it perfect for entertaining family and friends. On the first floor, you will find two generously sized double bedrooms, providing comfortable living spaces for rest and relaxation. The stylishly refitted bathroom is modern and functional, ensuring convenience for all residents. The property is set on a lovely plot, with extensive gardens both to the front and rear, offering a delightful outdoor space for gardening or leisure activities. There is also potential to create off-street parking if desired, adding to the practicality of this home. Situated in a quiet cul-de-sac, this property offers a peaceful retreat while still being conveniently located for local amenities. Internal viewing is highly recommended to fully appreciate the quality and charm of this delightful home. Don't miss the opportunity to make this your new residence.

ENTRANCE LOBBY

LOUNGE

14'6" x 13'6" (4.43 x 4.14)

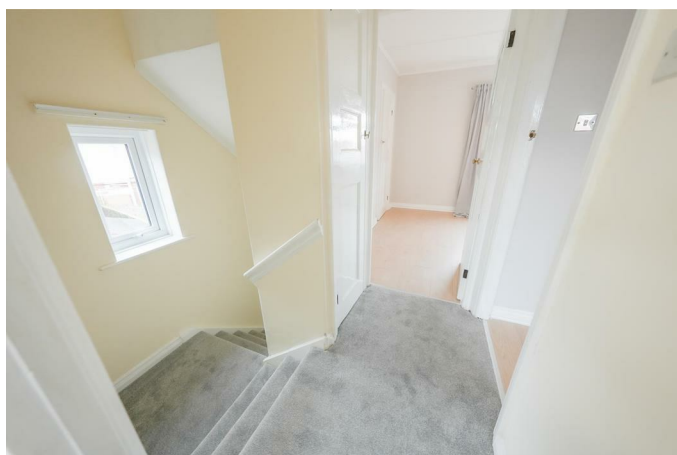


KITCHEN / DINER

18'4" x 7'10" (5.61 x 2.41)



ACCOMMODATION FIRST FLOOR



BEDROOM ONE

14'10" x 12'5" (4.54 x 3.79)



BEDROOM TWO

3.54 x 3.07



BATHROOM/W.C



EXTERNAL

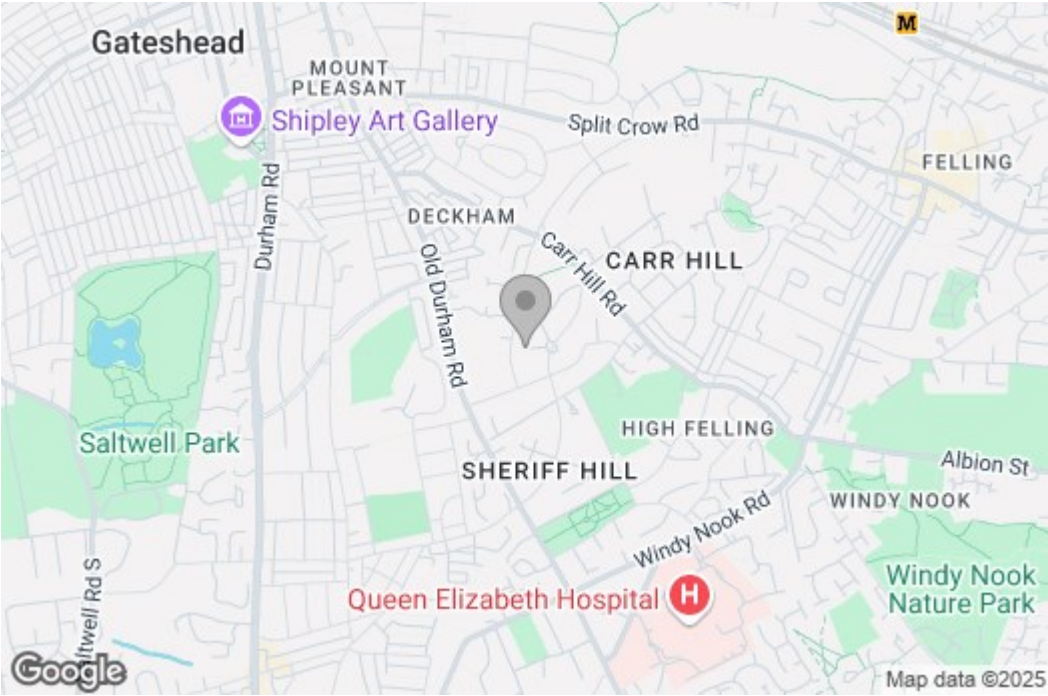


Property disclaimer

IMPORTANT NOTE TO PURCHASERS: We endeavour to make our sales particulars accurate and reliable, however, they do not constitute or form part of an offer or any contract and none is to be relied upon as statements of representation or fact. The services, systems and appliances listed in this specification have not been tested by us and no guarantee as to their operating ability or efficiency is given. All measurements have been taken as a guide to prospective buyers only, and are not precise. Floor plans where included are not to scale and accuracy is not guaranteed. If you require clarification or further information on any points, please contact us, especially if you are travelling some distance to view. Fixtures and fittings other than those mentioned are to be agreed with the seller. We cannot also confirm at this stage of marketing the tenure of this house.

Floor Plan

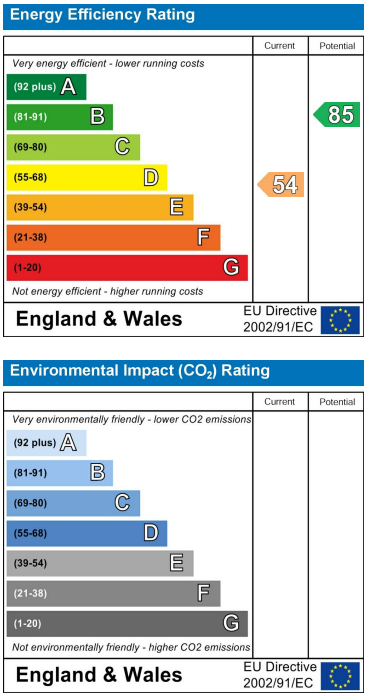
Area Map



These particulars, whilst believed to be accurate are set out as a general outline only for guidance and do not constitute any part of an offer or contract, purchaser should not rely on them as statements of representation of fact, but must satisfy themselves by inspection or otherwise as to their accuracy. No person in this firm's employment has the authority to make or give an representation or warranty in respect of the property.

429 Durham Road
Gateshead
NE9 5AN

Energy Efficiency Graph



0191 4874211
home@gordon-brown.co.uk
www.gordon-brown.co.uk