



19 Colton Gardens, NE9 6NQ

Offers Over £180,000

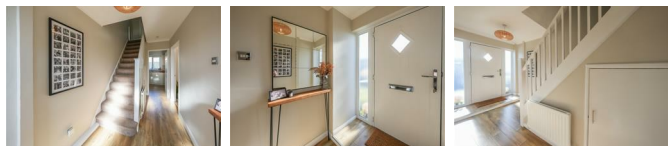
Nestled in the sought-after area of Low Fell, this stunning semi-detached house on Colton Gardens presents an exceptional opportunity for families seeking a comfortable and inviting home. As you step through the entrance hallway, you are welcomed into a spacious living room, featuring a charming bow window that provides a delightful outlook and floods the space with natural light.

The heart of the home is undoubtedly the dining kitchen, which is well-equipped with modern conveniences, including an integrated oven, dishwasher, washing machine, and fridge freezer. French doors lead from the kitchen to the rear garden, seamlessly blending indoor and outdoor living, making it perfect for entertaining or enjoying family time.

On the first floor, you will find the main bedroom, complete with built-in wardrobes and a window that offers splendid views, creating a serene retreat. Additionally, there are two further bedrooms, ideal for children or guests, along with a family bathroom that caters to all your needs.

The rear garden is a true highlight, boasting a lovely sunny aspect that invites you to relax and unwind in a tranquil setting. This outdoor space is perfect for children to play or for hosting summer gatherings with friends and family. Viewings are highly recommended to fully appreciate the charm and appeal of this gorgeous family home. With its prime location and thoughtful design, this property is sure to attract considerable interest. Don't miss the chance to make this delightful house your new home.

ENTRANCE HALLWAY



LIVING ROOM

14'0" x 11'8" (4.29m x 3.56m)



DINING KITCHEN

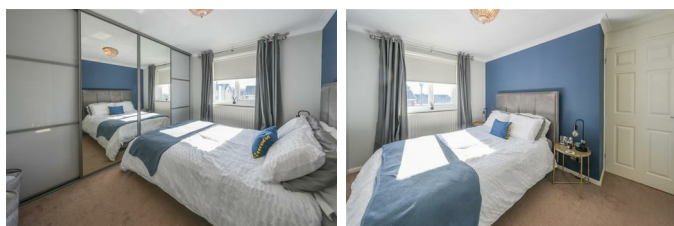
18'2" x 7'10" (5.56m x 2.39m)



FIRST FLOOR LANDING

BEDROOM ONE

12'0" x 9'10" (3.66m x 3.02m)



BEDROOM TWO

11'9" x 10'2" (3.60m x 3.12m)



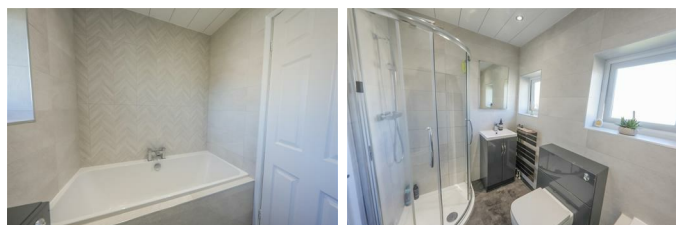
BEDROOM THREE

8'9" x 7'6" (2.68m x 2.31m)



BATHROOM

7'8" x 5'10" (2.36m x 1.79m)



EXTERNAL



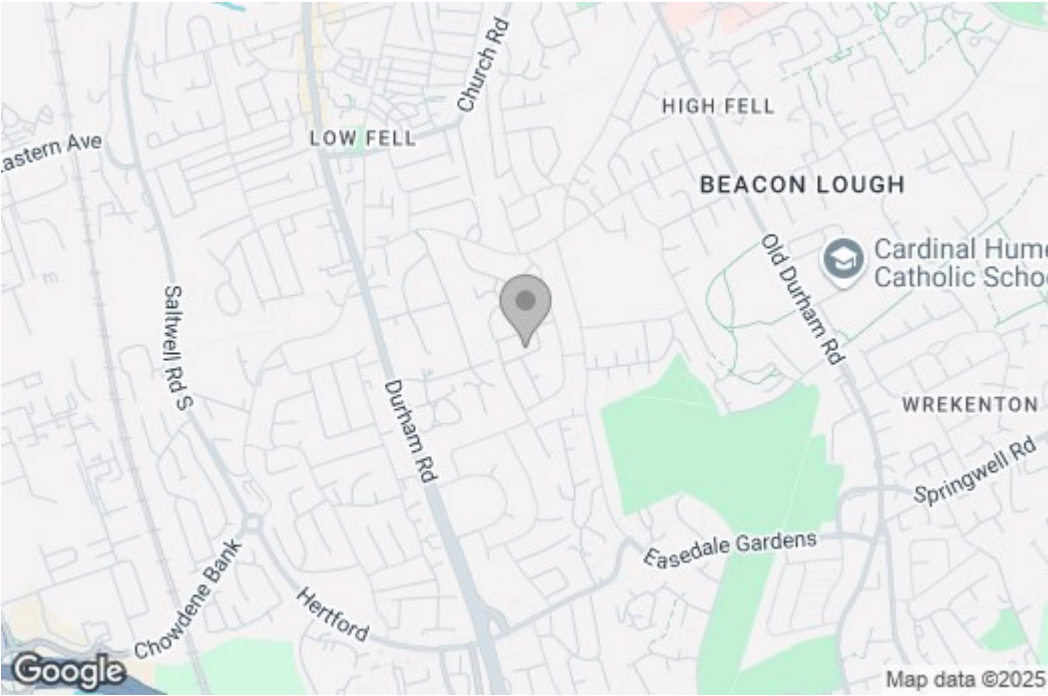
Property disclaimer

IMPORTANT NOTE TO PURCHASERS: We endeavour to make our sales particulars accurate and reliable, however, they do not constitute or form part of an offer or any contract and none is to be relied upon as statements of representation or fact. The services, systems and appliances listed in this specification have not been tested by us and no guarantee as to their operating ability or efficiency is given. All measurements have been taken as a guide to prospective buyers only, and are not precise. Floor plans where included are not to scale and accuracy is not guaranteed. If you require clarification or further information on any points, please contact us, especially if you are travelling some distance to view.

Fixtures and fittings other than those mentioned are to be agreed with the seller. We cannot also confirm at this stage of marketing the tenure of this house.

Floor Plan

Area Map



These particulars, whilst believed to be accurate are set out as a general outline only for guidance and do not constitute any part of an offer or contract, purchaser should not rely on them as statements of representation of fact, but must satisfy themselves by inspection or otherwise as to their accuracy. No person in this firm's employment has the authority to make or give an representation or warranty in respect of the property.

Energy Efficiency Graph

