



5 Sandringham Court, Gateshead, NE10 9UB

Offers Over £70,000

One of the best positioned apartments in the block, we are delighted to offer for sale this beautiful ground floor apartment which boasts fantastic views from the lounge and the master bedrooms. The apartment is offered for sale with no chain and will make the perfect home for a first time buyer or even someone looking to downsize. The apartment has been updated and provides a stylish shaker style kitchen with built in appliances and a modern bathroom/wc. The accommodation briefly comprises; entrance communal hallway, apartment hallway, dual aspect lounge, shaker style kitchen, three live bathroom/wc and two bedrooms. Externally there is residents parking and lovely communal garden areas. This apartment must be viewed internally to appreciate its layout and views.

COMMUNAL ENTRANCE

Access is via an intercom system.

APARTMENT HALLWAY

With two useful storage cupboards. Internal doors opens into the lounge, kitchen, bathroom/wc and both bedrooms.

LOUNGE

10'8" x 10'7" (3.26 x 3.25)



A lovely bright and airy room with four double glazed windows which predominantly overlook the front aspect and boasts amazing views.

KITCHEN

5'11" x 12'3" (1.81 x 3.74)



The kitchen is fitted with a range of wall and base Shaker style units with a sink unit which is fitted with a mixer tap. Built in appliances include an electric ceramic hob with an oven fitted below and extractor fan fitted above. There is tiled splash backs and recesses have been provided for a fridge freezer and washing machine. A double glazed window overlooks the side aspect. Radiator.

MASTER BEDROOM ONE

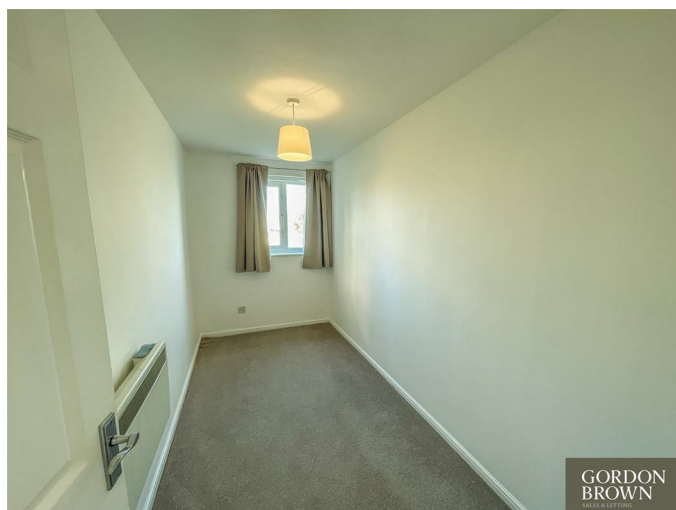
12'4" x 9'8" (3.78 x 2.97)



With a radiator and a double glazed window overlooks the front aspect with a lovely view.

BEDROOM TWO

12'3" x 5'8" (3.75 x 1.73)



With a radiator and a double glazed window which overlooks the side aspect with pleasant outlook.

BATHROOM/WC



with a three piece suite which briefly comprises; low level wc, wash hand basin with mixer tap and a panelled bath which is fitted with a glass shower screen and a shower fitted above. There is part tiled walls and a

EXTERNAL



The apartment block is surrounded by lawned communal gardens. Allocated parking is also provided within the residents car park.

ALLOCATED PARKING

Allocated parking is also provided within the residents car park.

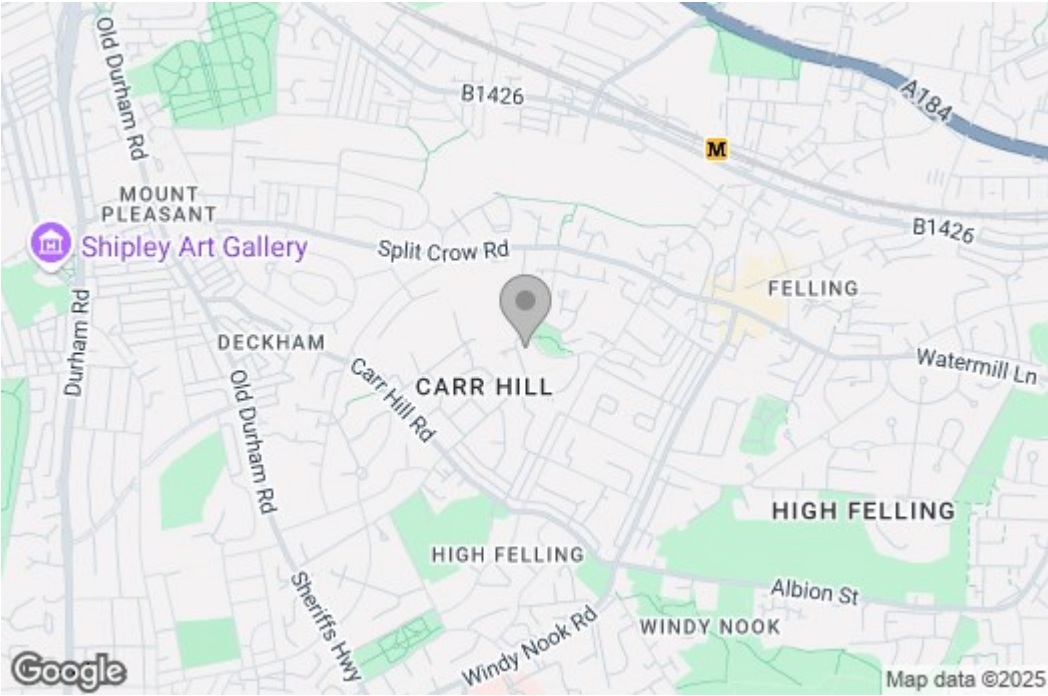
Property disclaimer

IMPORTANT NOTE TO PURCHASERS: We endeavour to make our sales particulars accurate and reliable, however, they do not constitute or form part of an offer or any contract and none is to be relied upon as statements of representation or fact. The services, systems and appliances listed in this specification have not been tested by us and no guarantee as to their operating ability or efficiency is given. All measurements have been taken as a guide to prospective buyers only, and are not precise. Floor plans where included are not to scale and accuracy is not guaranteed. If you require clarification or further information on any points, please contact us, especially if you are travelling some distance to view. Fixtures and fittings other than those mentioned are

to be agreed with the seller. We cannot also confirm at this stage of marketing the tenure of this house.

Floor Plan

Area Map



These particulars, whilst believed to be accurate are set out as a general outline only for guidance and do not constitute any part of an offer or contract, purchaser should not rely on them as statements of representation of fact, but must satisfy themselves by inspection or otherwise as to their accuracy. No person in this firm's employment has the authority to make or give an representation or warranty in respect of the property.

Energy Efficiency Graph

