



17 Dryden Court, Gateshead, NE9 5BY

Offers Over £55,000

Welcome to this charming retirement apartment located in the desirable Dryden Court on Dryden Road, Low Fell, Gateshead. This delightful ground floor garden flat offers the perfect blend of comfort and convenience, making it an ideal choice for those seeking a peaceful living environment.

Upon entering the apartment, you will find a welcoming hallway that leads to a spacious lounge, the well-appointed kitchen is designed for ease of use, providing a functional space for meal preparation. The bedroom is a tranquil retreat, offering ample space for rest and relaxation, while the bathroom features a modern adapted design with a W.C. for your convenience.

One of the standout features of this property is its own access to the outside, allowing you to enjoy the fresh air and the beautifully maintained communal grounds. There is also communal parking for the building. As part of a secure independent living community, residents benefit from a range of facilities and activities designed to enhance their quality of life. The communal lounge serves as a social hub, where you can engage with fellow residents and participate in various activities.

This retirement apartment is not just a home; it is a lifestyle choice that offers security, community, and comfort. With its prime location in Low Fell, you will have easy access to local amenities, making it a convenient place to live. Don't miss the opportunity to make this lovely flat your new home.

COMMUNAL ENTRANCE

COMMUNAL LOUNGE



APARTMENT HALLWAY

LOUNGE



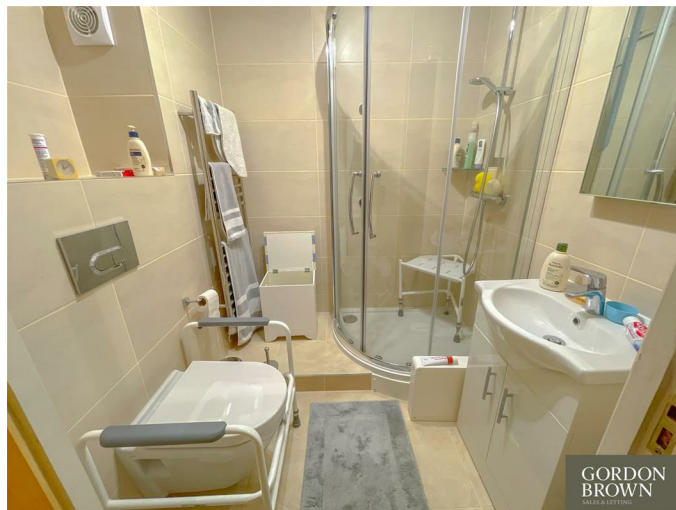
KITCHEN



BEDROOM



BATHROOM/W.C



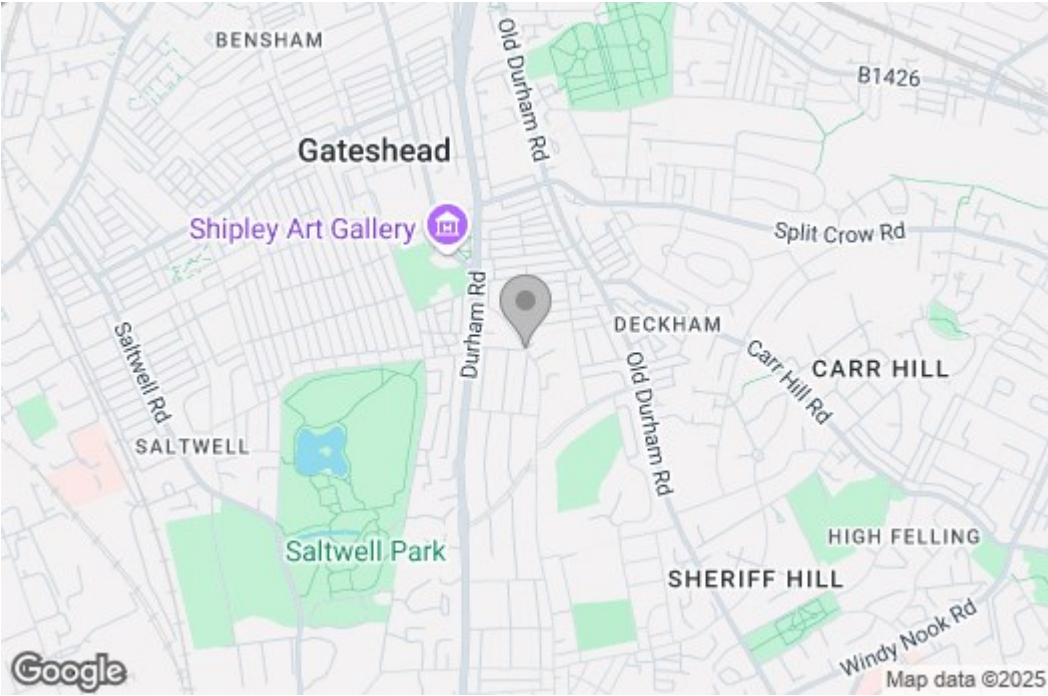
EXTERNAL

Property disclaimer

IMPORTANT NOTE TO PURCHASERS: We endeavour to make our sales particulars accurate and reliable, however, they do not constitute or form part of an offer or any contract and none is to be relied upon as statements of representation or fact. The services, systems and appliances listed in this specification have not been tested by us and no guarantee as to their operating ability or efficiency is given. All measurements have been taken as a guide to prospective buyers only, and are not precise. Floor plans where included are not to scale and accuracy is not guaranteed. If you require clarification or further information on any points, please contact us, especially if you are travelling some distance to view. Fixtures and fittings other than those mentioned are to be agreed with the seller. We cannot also confirm at this stage of marketing the tenure of this house.

Floor Plan

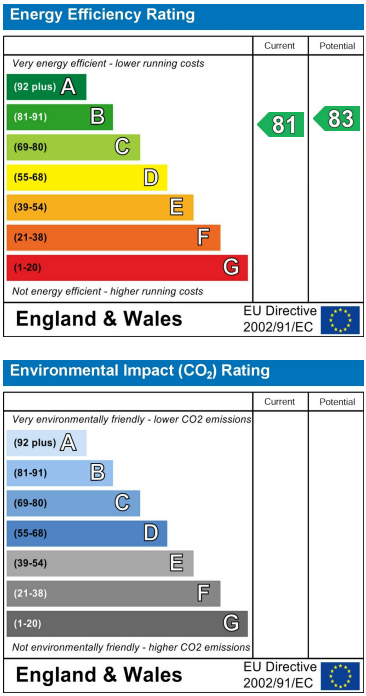
Area Map



These particulars, whilst believed to be accurate are set out as a general outline only for guidance an do not constitute any part of an offer or contract, purchaser should not rely on them as statements of representation of fact, but must satisfy themselves by inspection or otherwise as to their accuracy. No person in this firms employment has the authority to make or give an representation or warranty in respect of the property.

429 Durham Road
Gateshead
NE9 5AN

Energy Efficiency Graph



0191 4874211
home@gordon-brown.co.uk
www.gordon-brown.co.uk