



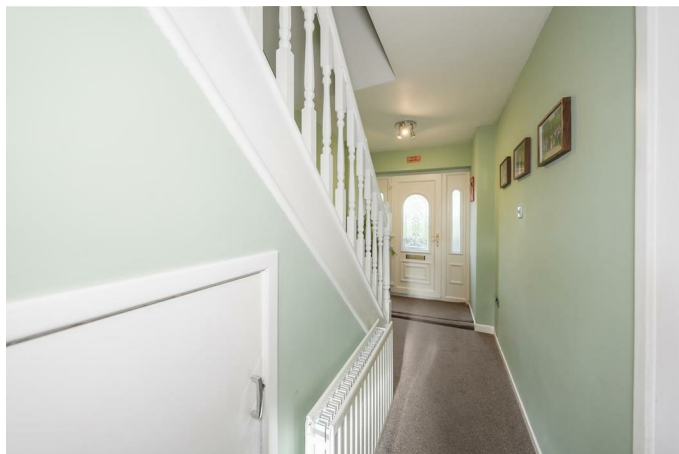
11 Satley Gardens, Gateshead, NE9 7ET

Offers Over £150,000

Nestled in the desirable area of Low Fell, this charming semi-detached house on Satley Gardens offers a delightful blend of comfort and style. As you enter, you are welcomed by a spacious hallway that leads to a cosy living room, complete with a living flame effect gas fire and an attractive feature fireplace, perfect for those chilly evenings. The well-appointed kitchen boasts a built-in fridge/freezer and features patio doors that seamlessly connect to the dining room/garden room, which is bathed in natural light. This inviting space also has French doors that open onto a beautifully decked sun terrace, ideal for al fresco dining or simply enjoying the outdoors. The first floor comprises three well-proportioned bedrooms, one of which benefits from built-in mirrored wardrobes, providing ample storage. A family bathroom completes this level, ensuring convenience for all.

Outside, the property features low maintenance gardens both at the front and rear, allowing you to enjoy your outdoor space without the hassle of extensive upkeep. This lovely family home is a must-see, and viewing is essential to fully appreciate its charm and potential. Whether you are a first-time buyer or looking to settle in a friendly community, this property is sure to meet your needs.

ENTRANCE HALLWAY



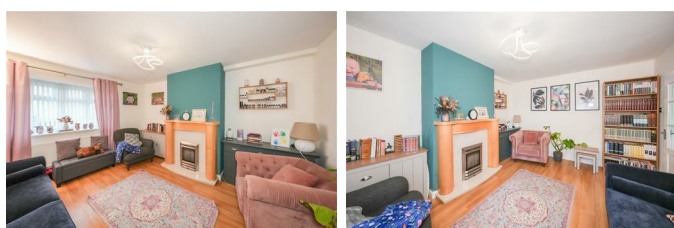
BEDROOM TWO

11'10" x 8'4" (3.61m x 2.56m)



LIVING ROOM

13'9" x 11'8" (4.21m x 3.58m)



BEDROOM THREE

9'4" x 7'7" (2.86m x 2.32m)



KITCHEN

18'2" x 9'5" (5.56m x 2.88m)



DINING ROOM/GARDEN ROOM

11'2" x 9'3" (3.41m x 2.83m)



BATHROOM

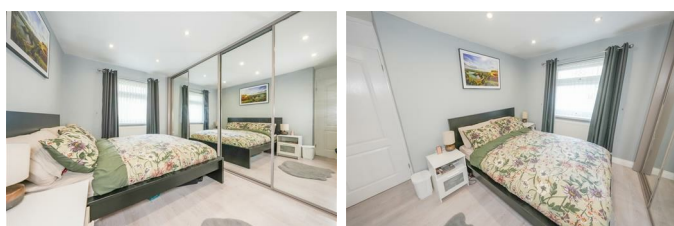
7'9" x 5'3" (2.37m x 1.62m)



FIRST FLOOR LANDING

BEDROOM ONE

10'5" x 10'2" (3.20m x 3.10m)



EXTERNAL

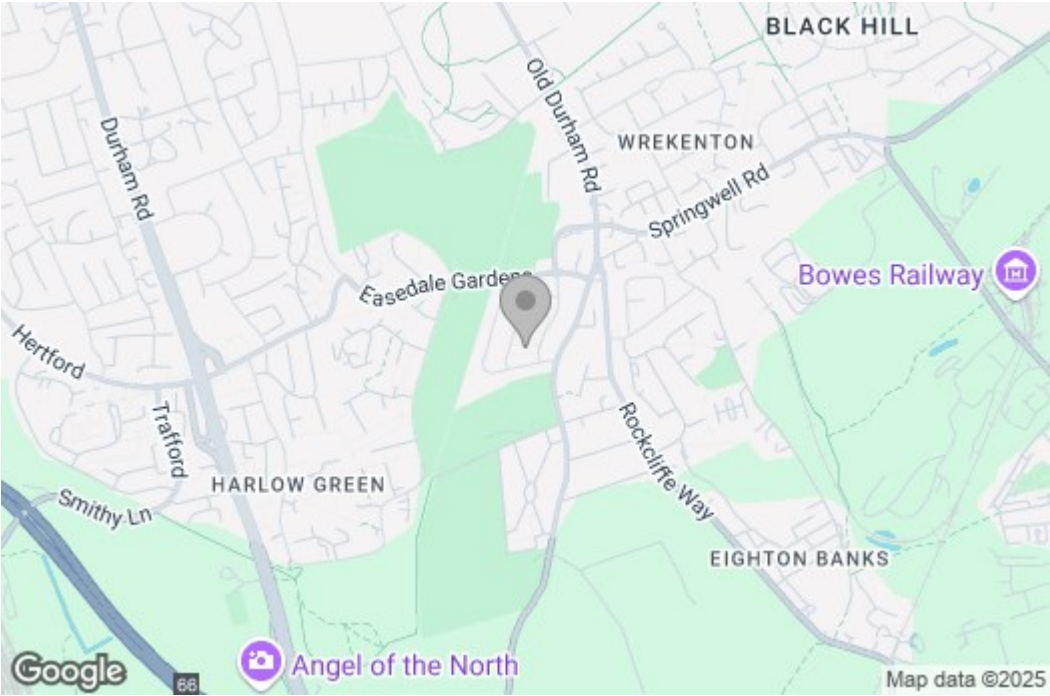


Property disclaimer

IMPORTANT NOTE TO PURCHASERS: We endeavour to make our sales particulars accurate and reliable, however, they do not constitute or form part of an offer or any contract and none is to be relied upon as statements of representation or fact. The services, systems and appliances listed in this specification have not been tested by us and no guarantee as to their operating ability or efficiency is given. All measurements have been taken as a guide to prospective buyers only, and are not precise. Floor plans where included are not to scale and accuracy is not guaranteed. If you require clarification or further information on any points, please contact us, especially if you are travelling some distance to view. Fixtures and fittings other than those mentioned are to be agreed with the seller. We cannot also confirm at this stage of marketing the tenure of this house.

Floor Plan

Area Map



These particulars, whilst believed to be accurate are set out as a general outline only for guidance and do not constitute any part of an offer or contract, purchaser should not rely on them as statements of representation of fact, but must satisfy themselves by inspection or otherwise as to their accuracy. No person in this firm's employment has the authority to make or give an representation or warranty in respect of the property.

Energy Efficiency Graph

