



53 Iona Road, Gateshead, NE10 9TA

£84,950

Nestled on the charming Iona Road in Gateshead, this beautifully presented ground floor flat offers a delightful blend of comfort and style. Upon entering, you are welcomed by a spacious entrance hallway, complete with built-in storage, providing both practicality and a sense of organisation.

The living room is a standout feature of the property, boasting a modern living flame effect wall-mounted fire that creates a warm and inviting atmosphere. This space seamlessly flows into the well-equipped kitchen, which includes an integrated oven, fridge/freezer, and washing machine, making it perfect for both cooking and entertaining. The flat comprises two generously sized bedrooms, with the main bedroom featuring a lovely bay window and a striking chimney breast wall that adds character and charm. The second double bedroom offers ample space for guests or family members. Completing this delightful home is a rear hallway that leads to a stylish shower room, ensuring convenience for all residents. Outside, you will find a private yard, ideal for enjoying the fresh air or tending to your plants, along with a handy garden shed for additional storage. This property is perfect for those seeking a comfortable and well-appointed living space in a desirable location. With its modern amenities and charming features, this flat is sure to impress. Don't miss the opportunity to make this lovely home your own.

ENTRANCE HALLWAY



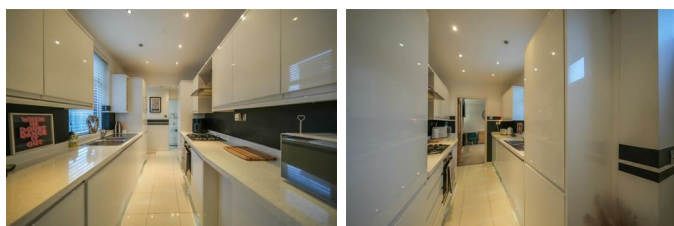
LIVING ROOM

12'5" x 11'2" (3.79m x 3.41m)



KITCHEN

13'11" x 6'9" (4.25m x 2.07m)



REAR HALLWAY

SHOWER ROOM



MAIN BEDROOM

13'0" x 12'10" (3.97m x 3.92m)



BEDROOM TWO

9'10" x 8'8" (3.00m x 2.65m)



EXTERNAL



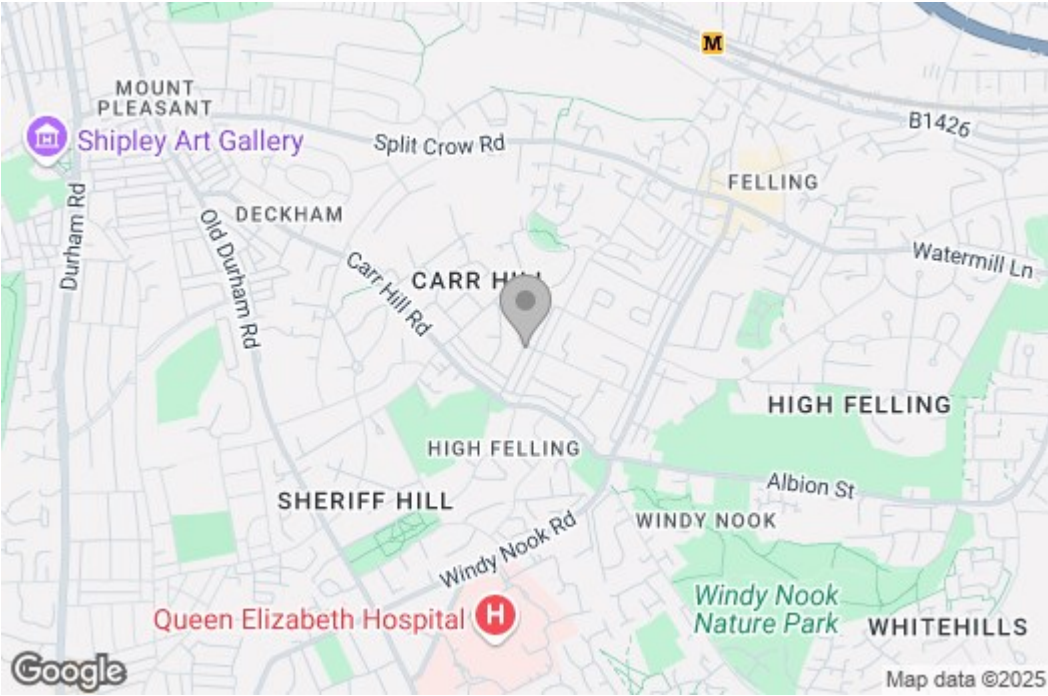
Property disclaimer

IMPORTANT NOTE TO PURCHASERS: We endeavour to make our sales particulars accurate and reliable, however, they do not constitute or form part of an offer or any contract and none is to be relied upon as statements of representation or fact. The services, systems and appliances listed in this specification have not been tested by us and no guarantee as to their operating ability or efficiency is given. All measurements have been taken as a guide to prospective buyers only, and are not precise. Floor plans where included are not to scale and accuracy is not guaranteed. If you require clarification or further information on any points, please contact us, especially if you are travelling some distance to view.

Fixtures and fittings other than those mentioned are to be agreed with the seller. We cannot also confirm at this stage of marketing the tenure of this house.

Floor Plan

Area Map



These particulars, whilst believed to be accurate are set out as a general outline only for guidance and do not constitute any part of an offer or contract, purchaser should not rely on them as statements of representation of fact, but must satisfy themselves by inspection or otherwise as to their accuracy. No person in this firm's employment has the authority to make or give an representation or warranty in respect of the property.

Energy Efficiency Graph

