



6 Bartram Gardens, Gateshead, NE8 4SJ

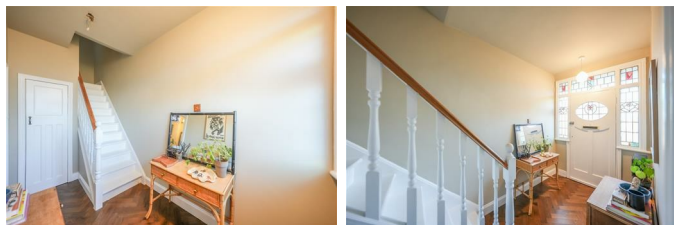
Offers Over £265,000

Welcome to this stunning three bedroom Victorian terraced home, beautifully blending period charm with modern style. Featuring two spacious reception rooms, a well-appointed kitchen, and three generously sized bedrooms, this property is perfect for family living.

The family bathroom includes a w.c., and an additional attic room offers versatile space that can be tailored to your needs.

As you step inside, you'll be captivated by the array of original period features, including exquisite stained glass windows, elegant cast iron fire surrounds, herring bone wood flooring, column radiators, ornate cornices, and original doors with high skirtings. The vendors have thoughtfully curated an eclectic interior, showcasing a vibrant palette that enhances the home's character and warmth. This property promises to impress at every turn, offering ample living space and a sympathetic design that honors its Victorian heritage. Ideal for those seeking a unique and stylish home, this is a must-see! An internal viewing is essential to fully appreciate the size and quality of accommodation on offer here in this lovely home.

ENTRANCE HALLWAY



LOUNGE

15'0" x 11'11" (4.59 x 3.65)



DINING ROOM

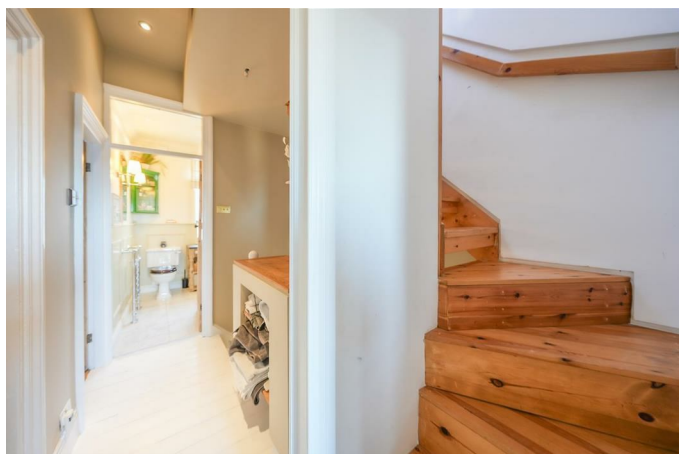
14'9" x 11'6" (4.52 x 3.52)



KITCHEN

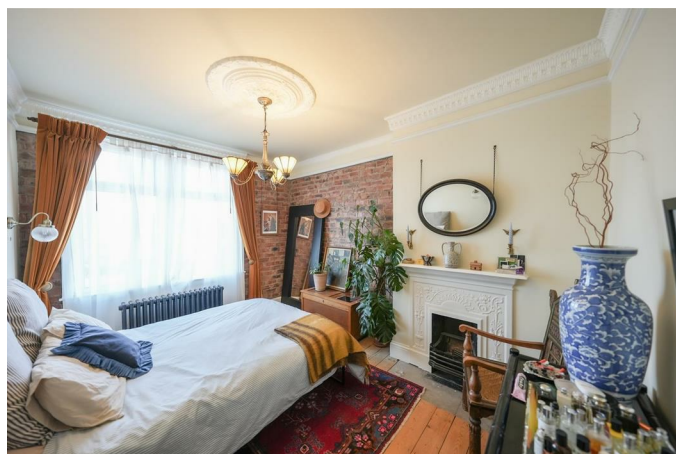


ACCOMMODATION FIRST FLOOR



BEDROOM ONE

12'4" x 10'4" (3.76 x 3.17)



BEDROOM TWO

13'1" x 10'3" (3.99 x 3.14)



BEDROOM THREE

7'8" x 7'7" (2.34 x 2.32)



FAMILY BATHROOM/ W.C.



ATTIC SPACE

12'10" x 11'4" (3.93 x 3.47)

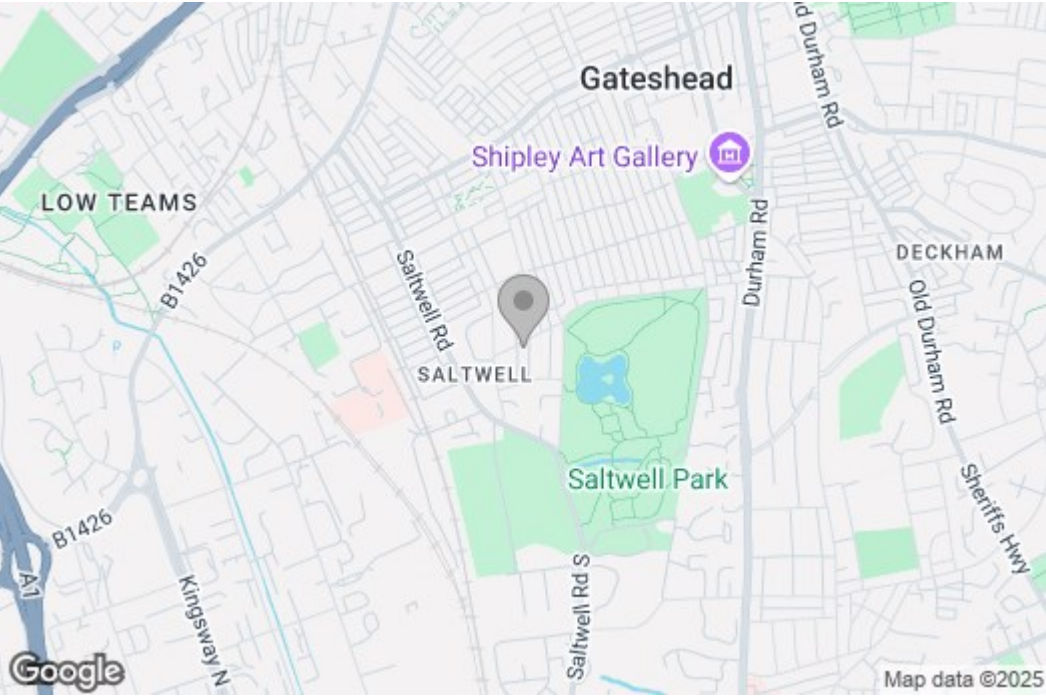


Property disclaimer

IMPORTANT NOTE TO PURCHASERS: We endeavour to make our sales particulars accurate and reliable, however, they do not constitute or form part of an offer or any contract and none is to be relied upon as statements of representation or fact. The services, systems and appliances listed in this specification have not been tested by us and no guarantee as to their operating ability or efficiency is given. All measurements have been taken as a guide to prospective buyers only, and are not precise. Floor plans where included are not to scale and accuracy is not guaranteed. If you require clarification or further information on any points, please contact us, especially if you are travelling some distance to view. Fixtures and fittings other than those mentioned are to be agreed with the seller. We cannot also confirm at this stage of marketing the tenure of this house.

Floor Plan

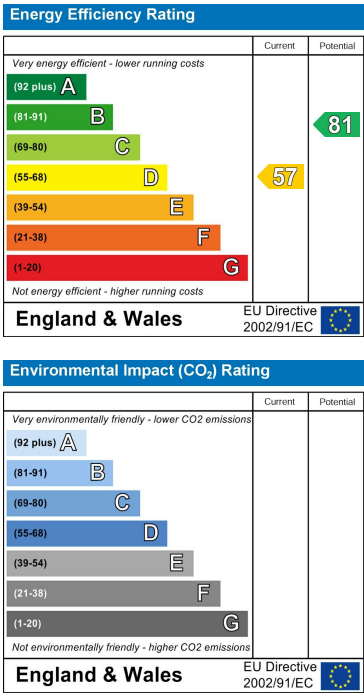
Area Map



These particulars, whilst believed to be accurate are set out as a general outline only for guidance and do not constitute any part of an offer or contract, purchaser should not rely on them as statements of representation of fact, but must satisfy themselves by inspection or otherwise as to their accuracy. No person in this firm's employment has the authority to make or give an representation or warranty in respect of the property.

429 Durham Road
Gateshead
NE9 5AN

Energy Efficiency Graph



0191 4874211
home@gordon-brown.co.uk
www.gordon-brown.co.uk